

cricket

Exploded views / Part lists

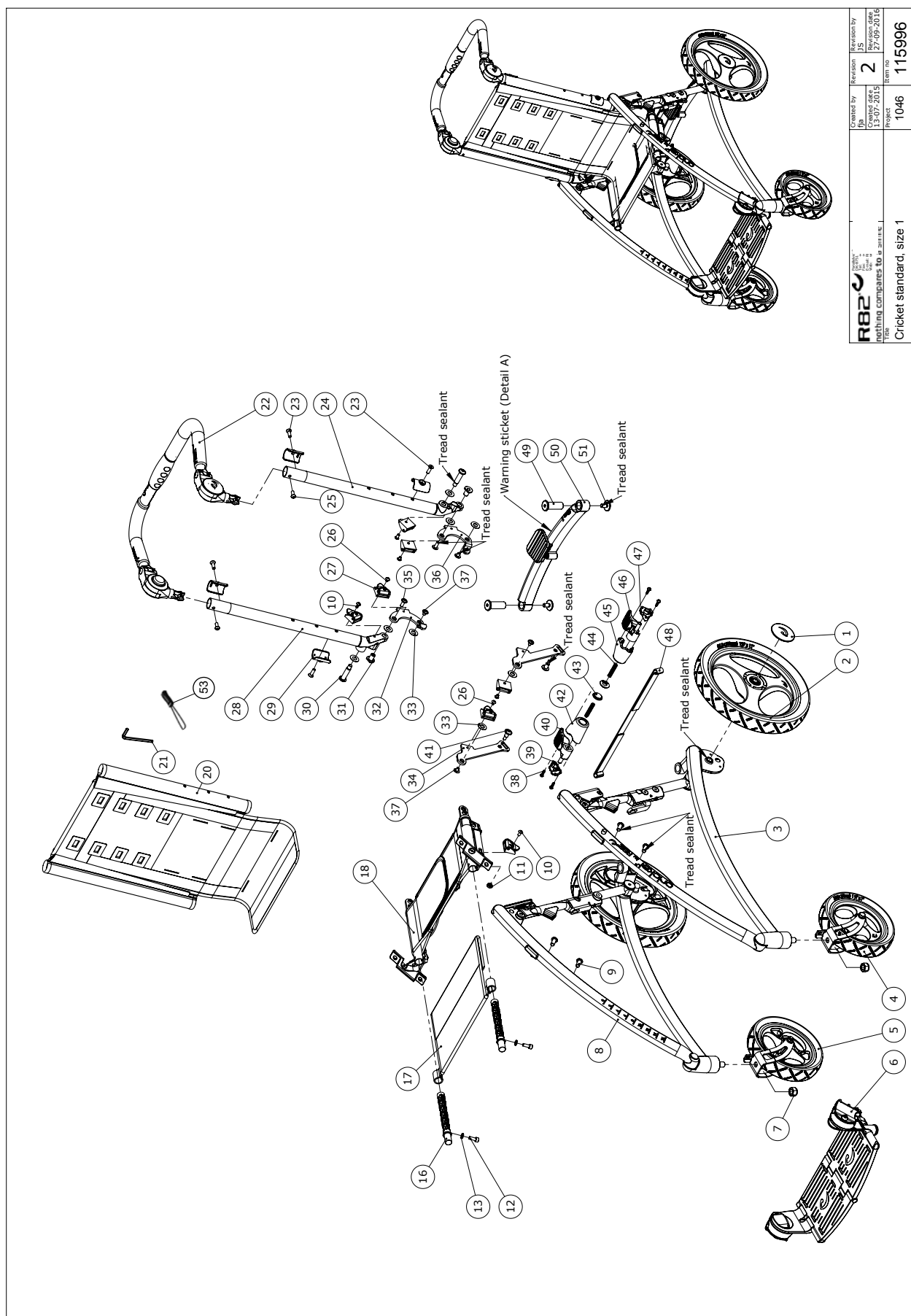
Rev. date (03.2017)

On the following pages you will find the parts used to assemble this product. Please note that some spare parts cannot be purchased individually but are part of a complete kit. Please also note that for some spare parts extra delivery time may occur.



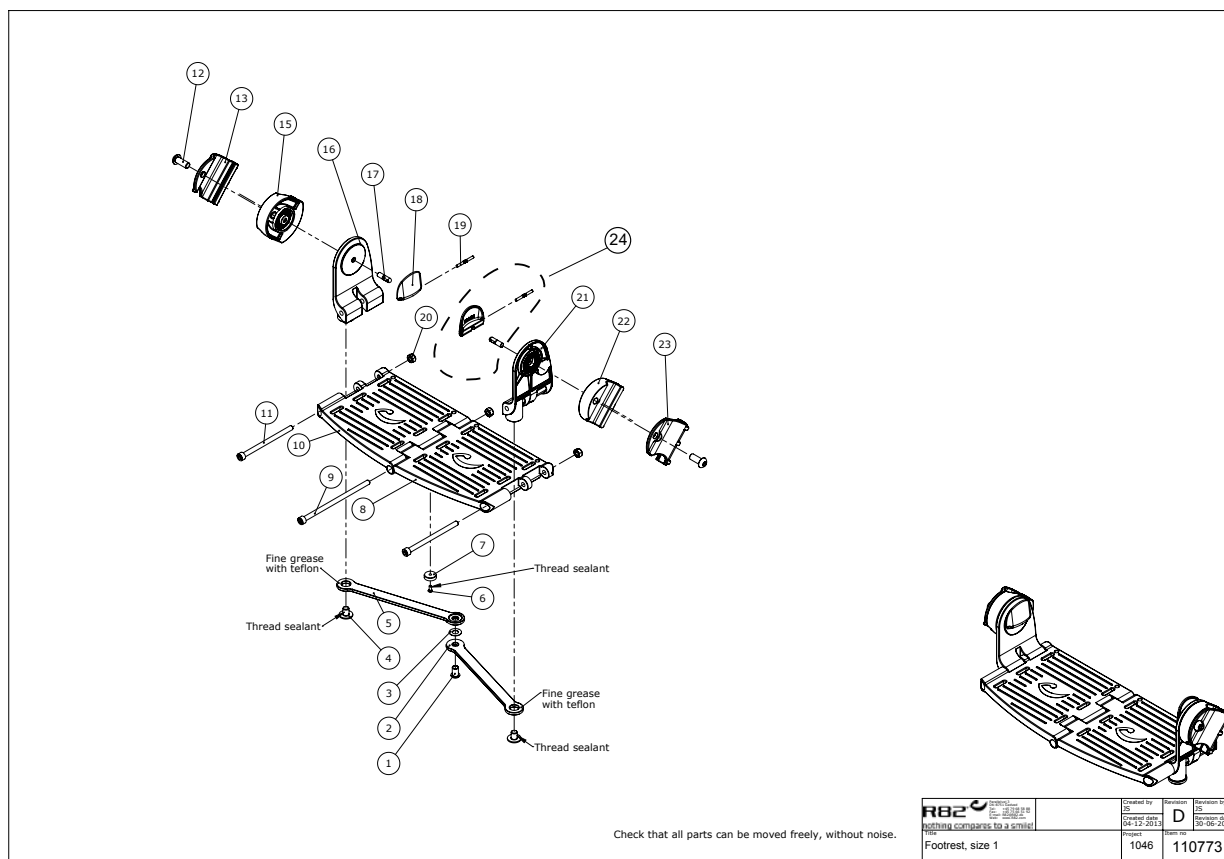
Contents

Cricket standard	3
Footrest	5
Sideframe Left	6
Sideframe Right	7
Handbrace	8
Armrest	9
Folding top	10
Direction lock	11

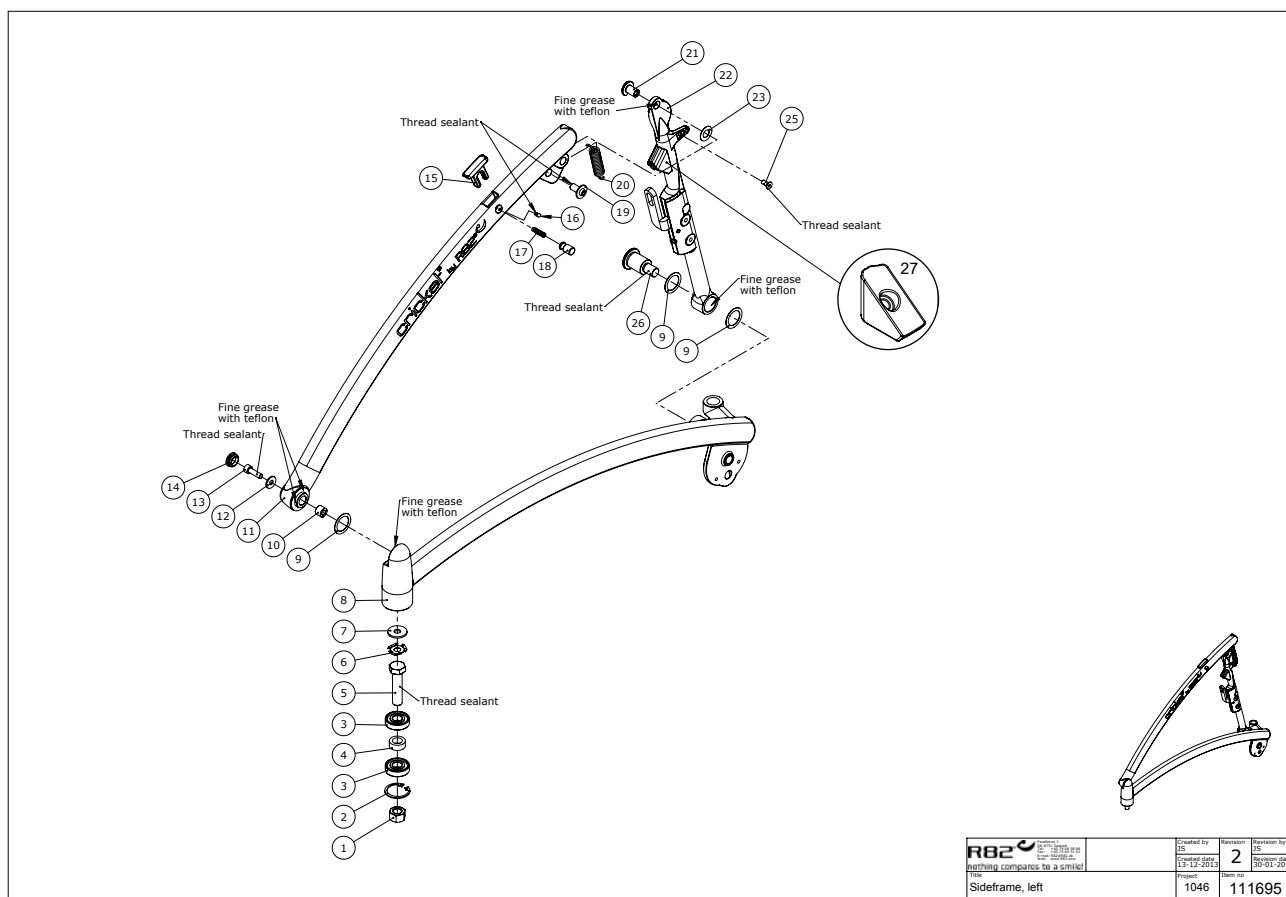


R82 <small>nothing companies to a waste</small>	Created by	Revision	Revision by
	JY	2	JY
Project Cricket standard, size 1	Issue date	Issue date	Issue date
	13-07-2015	27-09-2016	27-09-2016
Item no		Item no	
1046		115996	

Position	No.	Description	Quantity	Unit of Measure	Ean code
1	110193	Center cap with logo	PCS	1	5707292594136
2	110191	Rear wheel Ø280	PCS	1	5707292594105
4	110197	Front wheel ø180, left	PCS	1	5707292594181
5	112879	Front wheel ø180, right	PCS	1	5707292602954
6	110773	Footrest, size 1	PCS	1	5707292594815
6	111616	Footrest, size 2, long	PCS	1	5707292594990
16	111100	Rod for seat extension, size 1	PCS	2	5707292596413
16	111780	Rod for seat extension, size 2	PCS	2	5707292596406
17	116802	Extention fabric, size 1	PCS	1	5707292608529
17	116803	Extention fabric, size 2	PCS	1	5707292608796
20	116815	Back fabric, size 1	PCS	1	5707292608536
20	116816	Back fabric, size 2	PCS	1	5707292608789
22	110807	Handbrace, size 1	PCS	1	5707292607218
22	111646	Handbrace, size 2	PCS	1	5707292607225
24	112642	Back frame welded,size 1 left	PCS	1	5707292593740
24	111373	Back frame welded,size 2 left	PCS	1	5707292607744
27	75306	Snap lock R82 25	PCS	1	5707292437624
28	112644	Back frame welded,size 1 right	PCS	1	5707292593733
28	111510	Back frame welded,size 2 right	PCS	1	5707292607768
29	112689	Fabric mounth plate	PCS	1	5707292603500
30	110151	M8/Ø10 special bolt	PCS	1	5707292595591
41	112122	Ø8 spec.bolt f. locking joint	PCS	1	5707292594303
48	116811	Release strap, size 1	PCS	1	5707292608550
48	116812	Release strap, size 2	PCS	1	5707292608819
49	108759	Ø16 Lockpin	PCS	1	5707292594617
50	110800	Rear lock device, size 1	PCS	1	5707292594594
50	111645	Rear lock device, size 2	PCS	1	5707292594600
51	111774	M8 special lock bolt	PCS	1	5707292594624
53	4985700	Zip puller	PCS	1	5707292614377

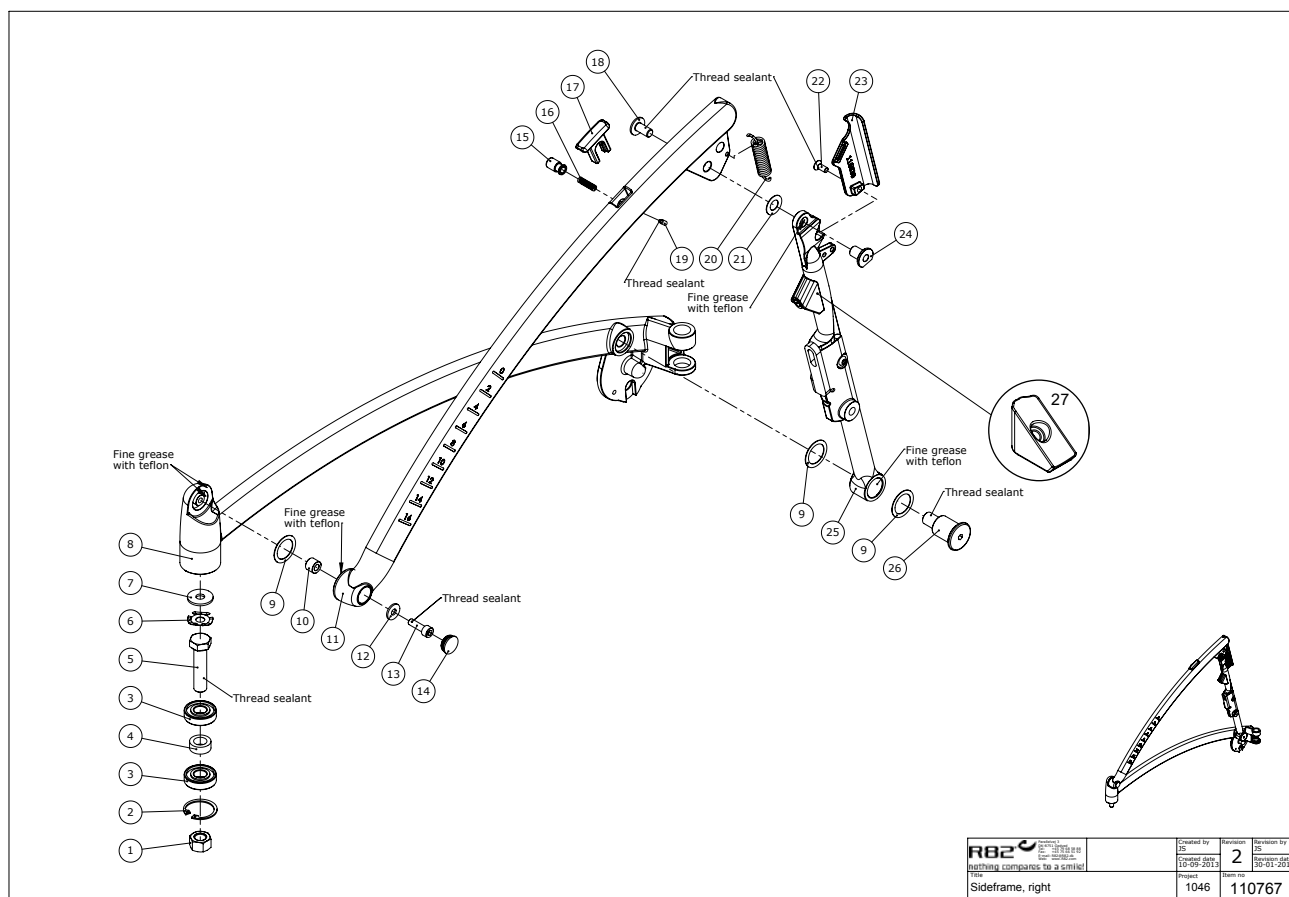


Position	No.	Description	Quantity	Unit of Measure	Ean code
13	108685	Suspension f. footrest,outer,R	PCS	1	5707292594891
15	108684	Suspension f. footrest,inner R	PCS	1	5707292594877
22	108804	Suspension f. footrest,inner L	PCS	1	5707292594884
23	108813	Suspension f. footrest,outer,L	PCS	1	5707292594907
24	127705	Releasehandle	PCS	1	5707292788306

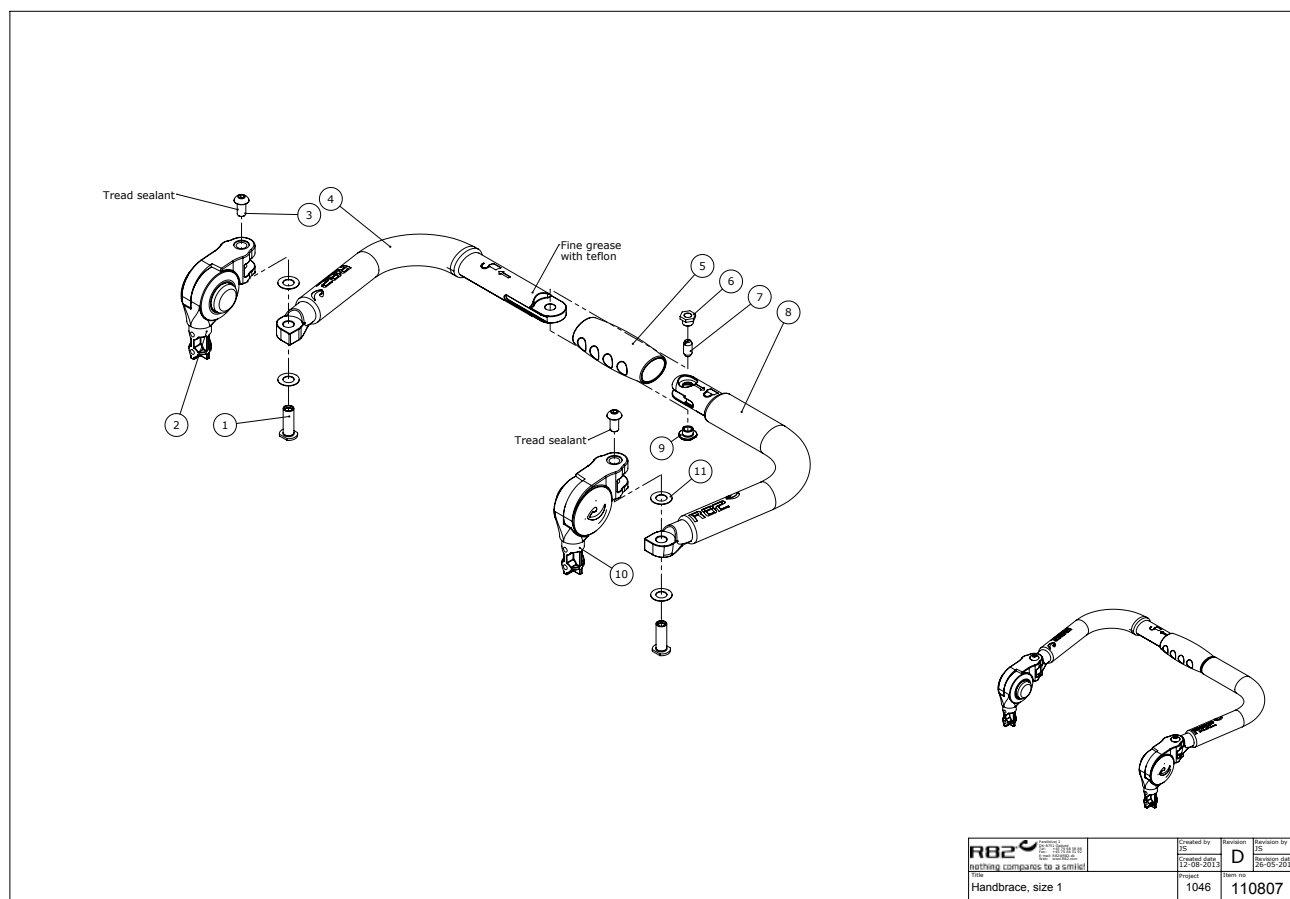


R82 <small>nothing compares to a smile</small> Sideframe, left	Created by 15	Revised by 2
	Change date 13-12-2013	Revision date 30-01-2017
	Project 1046	Item no 111695

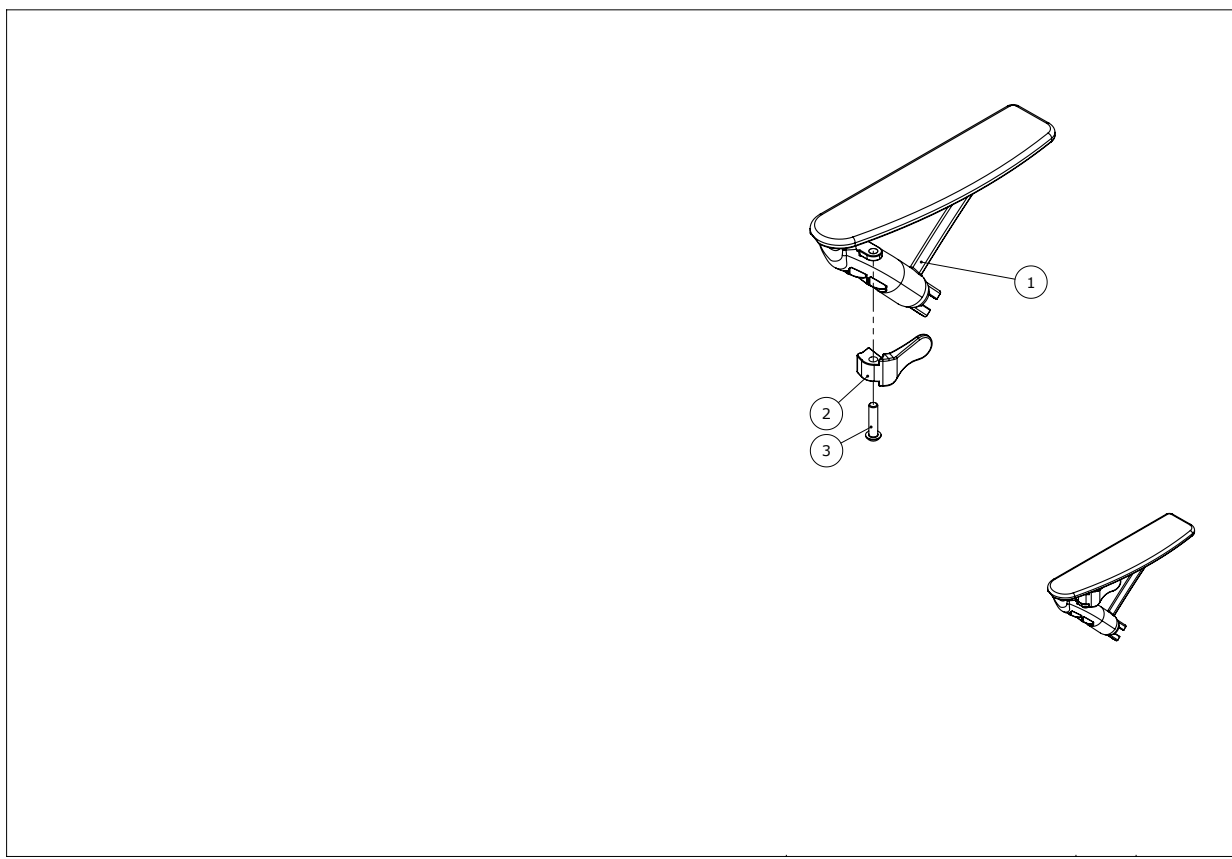
Position	No.	Description	Quantity	Unit of Measure	Ean code
15	112303	Blind plug	PCS	1	5707292595782
17	111341	Spring	PCS	1	5707292595898
18	111339	Release button	PCS	1	5707292595881
24	116561	Cover for spring left	PCS	1	5707292607973
27	116218	Block for unfold lock	PCS	1	5707292591524



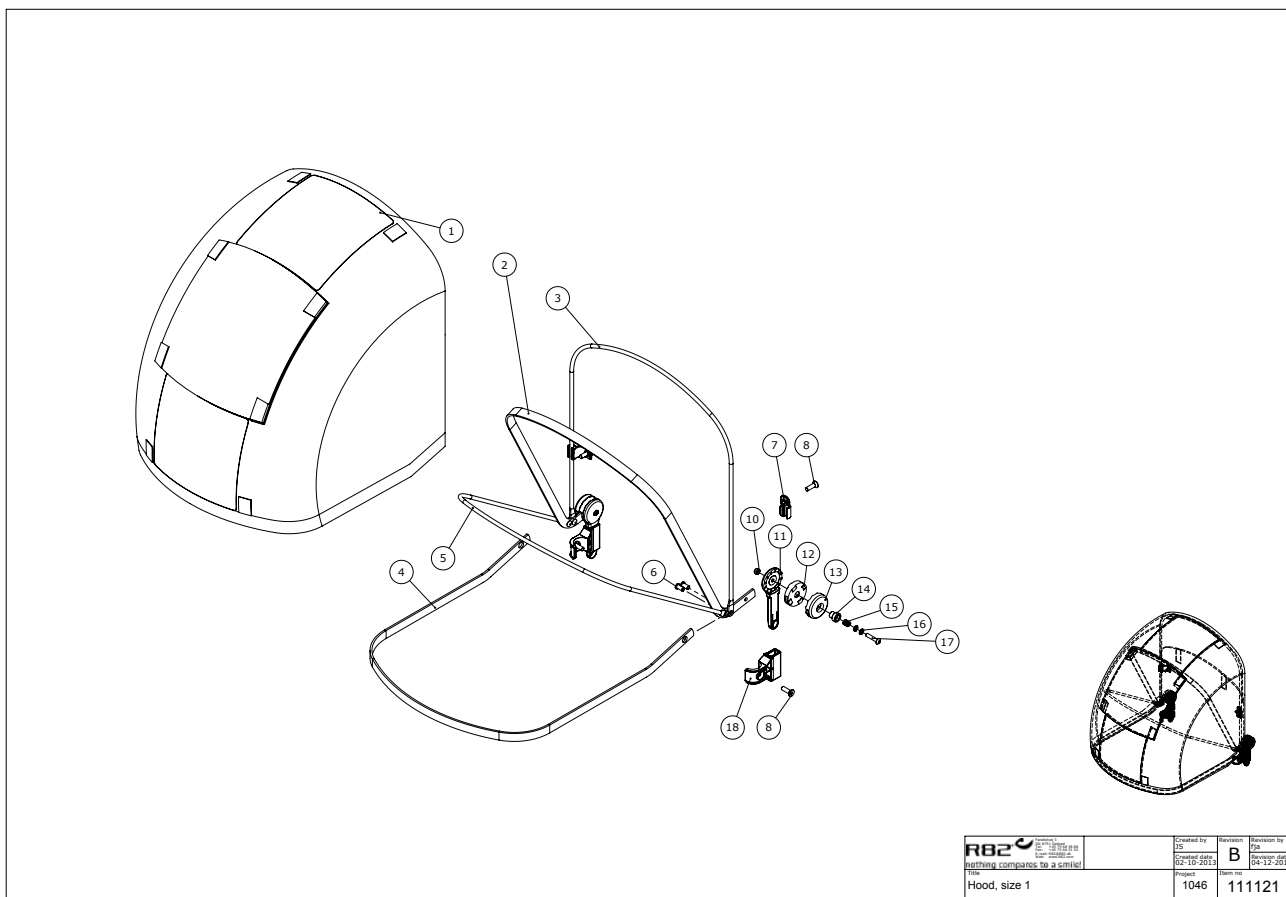
Position	No.	Description	Quantity	Unit of Measure	Ean code
15	111339	Release button	PCS	1	5707292595881
16	111341	Spring	PCS	1	5707292595898
17	112303	Blind plug	PCS	1	5707292595782
23	116539	Cover for spring right	PCS	1	5707292607980
27	116218	Block for unfold lock	PCS	1	5707292591524



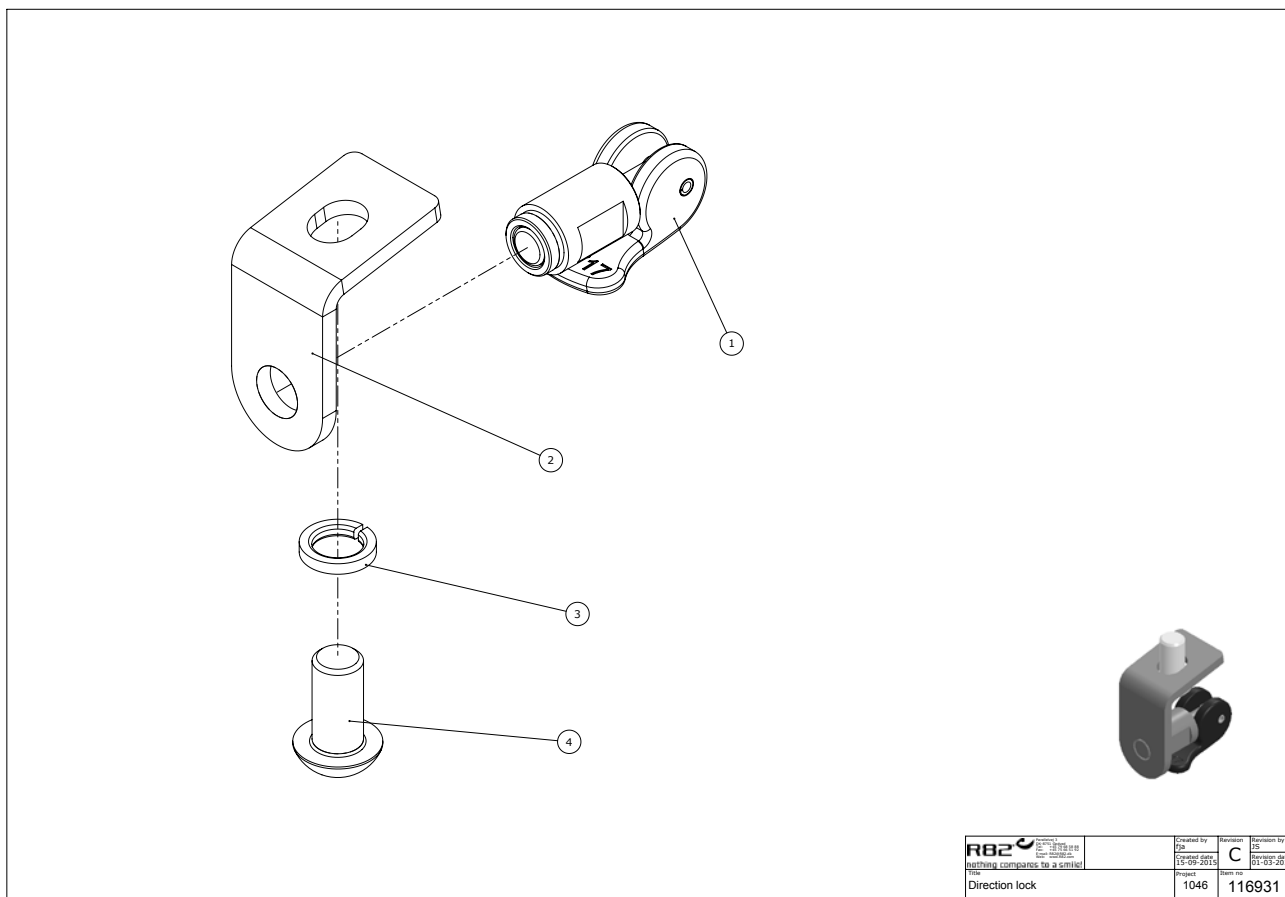
Position	No.	Description	Quantity	Unit of Measure	Ean code
2	110241	Angle joint, right	PCS	1	5707292593948
10	110235	Angle joint, left	PCS	1	5707292593931



Position	No.	Description	Quantity	Unit of Measure	Ean code
2	113713	Armrest handle	PCS	1	5707292607867



Position	No.	Description	Quantity	Unit of Measure	Ean code
7	112055	Fastener for hood, top	PCS	1	5707292595614
18	110158	Fastener for hood, bottom	PCS	1	5707292595638



Position	No.	Description	Quantity	Unit of Measure	Ean code
1	112715	Direction lock	PCS	1	5707292595775
2	111497	Direction lock, front wheel	PCS	1	5707292595768