

Flamingo

Exploded views / Part lists

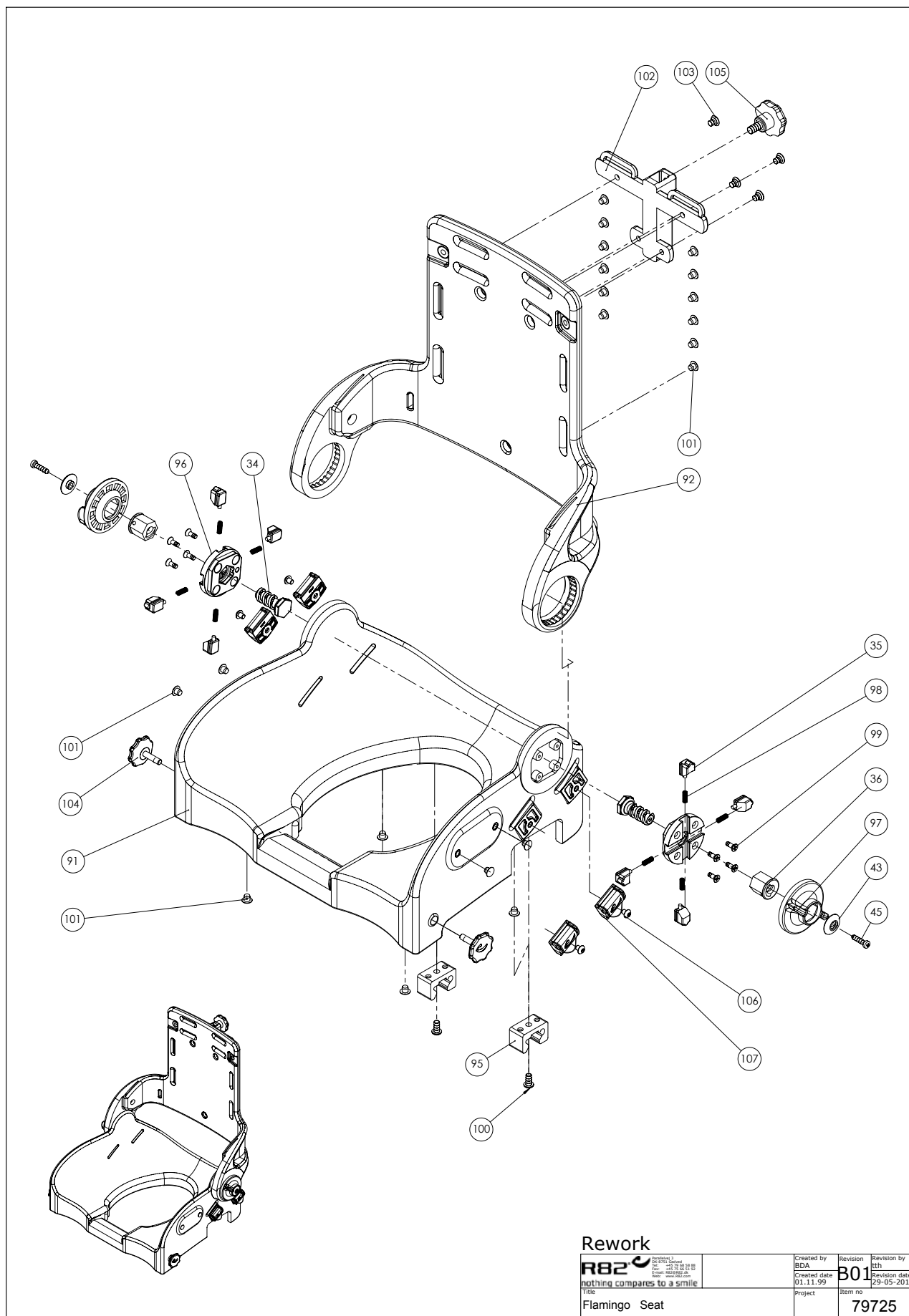
Rev. date (10.2016)

On the following pages you will find the parts used to assemble this product. Please note that some spare parts cannot be purchased individually but are part of a complete kit. Please also note that for some spare parts extra delivery time may occur.

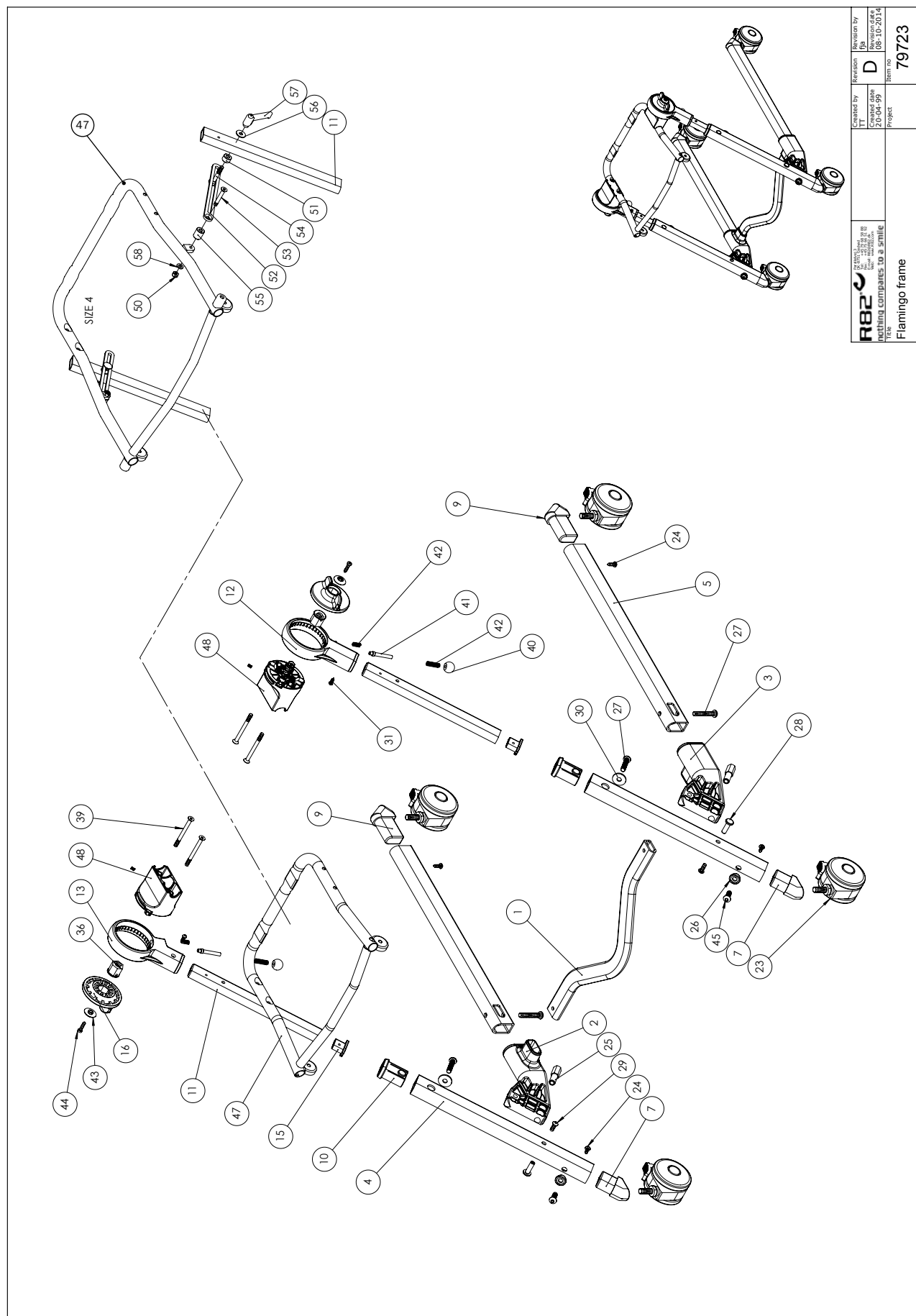


Contents

Seat	3
Frame	5
Arm support, back sides, pan with holder, suction cups.....	8
Separate armrests.....	11
Foot support.....	13



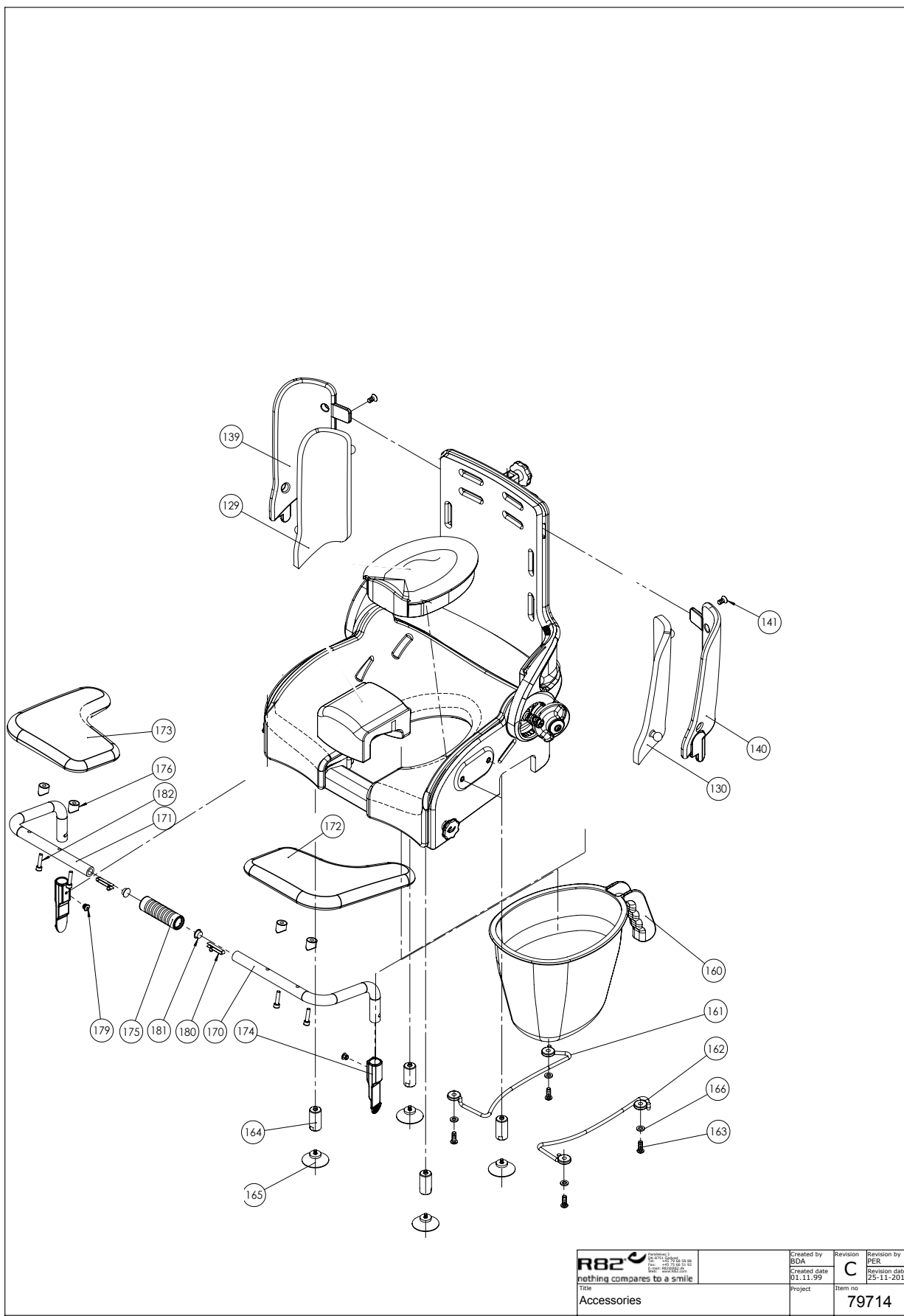
Position	No.	Description	Quantity	Unit of Measure	Ean code
1	110200	Snap Lock R82-25 mobile,W ø6,2	PCS	4	5707292579508
2	110201	Snap Lock R82-25 mobile, white	PCS	4	5707292579492
34	71136	Thread spindle, Flamingo	PCS	2	5707292104410
35	71133	T-flange, Flamingo	PCS	8	5707292104380
36	71128	Thread nut for angle adj.	PCS	2	5707292104359
43	71164	Knob Ø23, 5 for handle	PCS	2	5707292104540
45	1811112	Sheet metal screw 4,8*19 phx	PCS	2	5707292452184
91	71302	Flamingo Seat shell, size 1	PCS	1	5707292104984
91	71305-1	Flamingo sæde 4	PCS	1	5707292629432
91	71304	Flamingo Seat shell, size 3	PCS	1	5707292105004
91	71303	Flamingo Seat shell, size 2	PCS	1	5707292104991
92	71312	Flamingo back shell, size 1	PCS	1	5707292105028
92	71315	Flamingo back shell, size 4	PCS	1	5707292105059
92	71314	FLAMINGO BACK SHELL, SIZE 3	PCS	1	5707292105042
92	71313	Flamingo back shell, size 2	PCS	1	5707292105035
95	102429	Seatlock for Flamingo	PCS	2	5707292562036
96	71146	T-flange, Flamingo	PCS	2	5707292104434
97	71144	HAND WHEEL, FLAMINGO	PCS	2	5707292104427
98	0310124	Rf.spring 0.5*5.2*11mm	PCS	8	5707292135568
99	1940038	Eco-syn uh Ø4*14	PCS	8	5707292465597
100	0659200	Button head screw 6*12 stainl.	PCS	2	5707292139436
101	1310536	Covering button,white 13*5,0mm	PCS	16	5707292397911
101	1310536	Covering button,white 13*5,0mm	PCS	20	5707292397911
102	81138-90	Mounting for neck support	PCS	1	5707292227157
103	0609727	Stainless insex 6x12 uh	PCS	4	5707292138484
104	112708	Knob for Seat m6x23	PCS	2	5707292604286
105	3501050	Star grap Ø40 M8*15mm white	PCS	1	5707292146717
106	0631952	Button head M5*6, rf tuflok	PCS	4	5707292503725
107	110202	Snap Lock R82-25 With ø6	PCS	4	5707292575913




 nothing compares to a smile Title	Created by IT	Revision D	Revision by JBA	Revision date 08-10-2014	Item no. 79723
Flamingo frame					

Position	No.	Description	Quantity	Unit of Measure	Ean code
1	880145	Distance part for Flamingo 1	PCS	1	5707292369000
1	880146	Distance part for Flamingo 2	PCS	1	5707292369017
1	880147	Distance part for Flamingo 3	PCS	1	5707292369024
1	880148	Distance part for Flamingo 4	PCS	1	5707292369031
2	71141	TILTMOUNTING FLAMINGO	PCS	1	5707292411181
3	71142	TILTMOUNTING FLAMINGO	PCS	1	5707292411198
4	71152	Sidepiece for heightadjustment	PCS	1	5707292104489
5	71151	Side piece, horizontal	PCS	1	5707292104472
7	71103	Mounting f/ front wheel	PCS	1	5707292104106
9	71104	Mounting for rear wheel	PCS	1	5707292104113
10	71109	Steering bush for height adj.	PCS	1	5707292104168
11	71154	Bar for height adjust,sz 3+4	PCS	1	5707292104502
12	71121	Housing Left	PCS	1	5707292104281
13	71120	Housing Right	PCS	1	5707292104274
14	71125	Backflange w/t-track, Flamingo	PCS	2	5707292104328
15	71108	Ferrule and slider, Flamingo	PCS	1	5707292104151
16	71129	Handwheel o75, Flamingo	PCS	2	5707292104366
23	3006830	75mm white steinco wheel	PCS	4	5707292368560
24	1811112	Sheet metal screw 4,8*19 phx	PCS	2	5707292452184
25	71162	M8 hexagon bush f.left sidepcs	PCS	1	5707292104526
26	71110	White washer plastic, Flamingo	PCS	1	5707292104175
27	0663035	Button head screw 8*35 stainl.	PCS	1	5707292139627
28	71161	M6 bush for side piece	PCS	1	5707292104519
29	0659200	Button head screw 6*12 stainl.	PCS	1	5707292139436
30	1310711	Nylon washer 15x8,4x1,5mm	PCS	1	5707292429933
31	1811107	Taptight, M4*12	PCS	2	5707292584229
34	71135	Thread spindle, Flamingo	PCS	2	5707292104403
35	71133	T-flange, Flamingo	PCS	8	5707292104380
36	71128	Thread nut for angle adj.	PCS	2	5707292104359
37	0310126	Spring 0,65*5,65*20mm*10v	PCS	8	5707292135582
38	1605000	Stainless nut M6	PCS	4	5707292141316
39	0609745	Insex 6*60, stainless steel	PCS	4	5707292138538
40	3502008	Knob handle Ø20 M6	PCS	2	5707292146830
41	71163	Pin o8 for tilt mounting	PCS	2	5707292104533
42	0310100	Pressurespring 0,9*8*23*10,5v	PCS	2	5707292135513
43	71164	Knob Ø23, 5 for handle	PCS	2	5707292104540
44	1811112	Sheet metal screw 4,8*19 phx	PCS	2	5707292452184
45	0662500	Button head screw 8*25 stainl.	PCS	1	5707292139580
47	71362-1	Seat frame size 1, complete	PCS	1	5707292607652
47	71363-1	Seat frame size 2, complete	PCS	1	5707292607669
47	71364-1	Seatframe size 3, complete	PCS	1	5707292607676
47	71365-1	Seat frame 4, complete	PCS	1	5707292607683
48	71138	Angel adjust frame/chair	PCS	2	5707292543585
50	1631060	Stainless lock nut 6mm	PCS	2	5707292141446
51	71349	Distance bush	PCS	2	5707292105240
52	71348	Support rod for tilt, Flamingo	PCS	2	5707292105233
53	0609740	Insex 6*40, stainless	PCS	2	5707292376879
54	1905375	Bolt M6*35, stainless w/o nut	PCS	2	5707292142269
55	71350	Distance bush	PCS	2	5707292105257

56	1130600	Stainless washer 6mm	PCS	2	5707292140517
57	3502400	Tightening handle 42mm M6 bush	PCS	2	5707292146892
58	1105060	Stainless washer 6mm	PCS	2	5707292140357



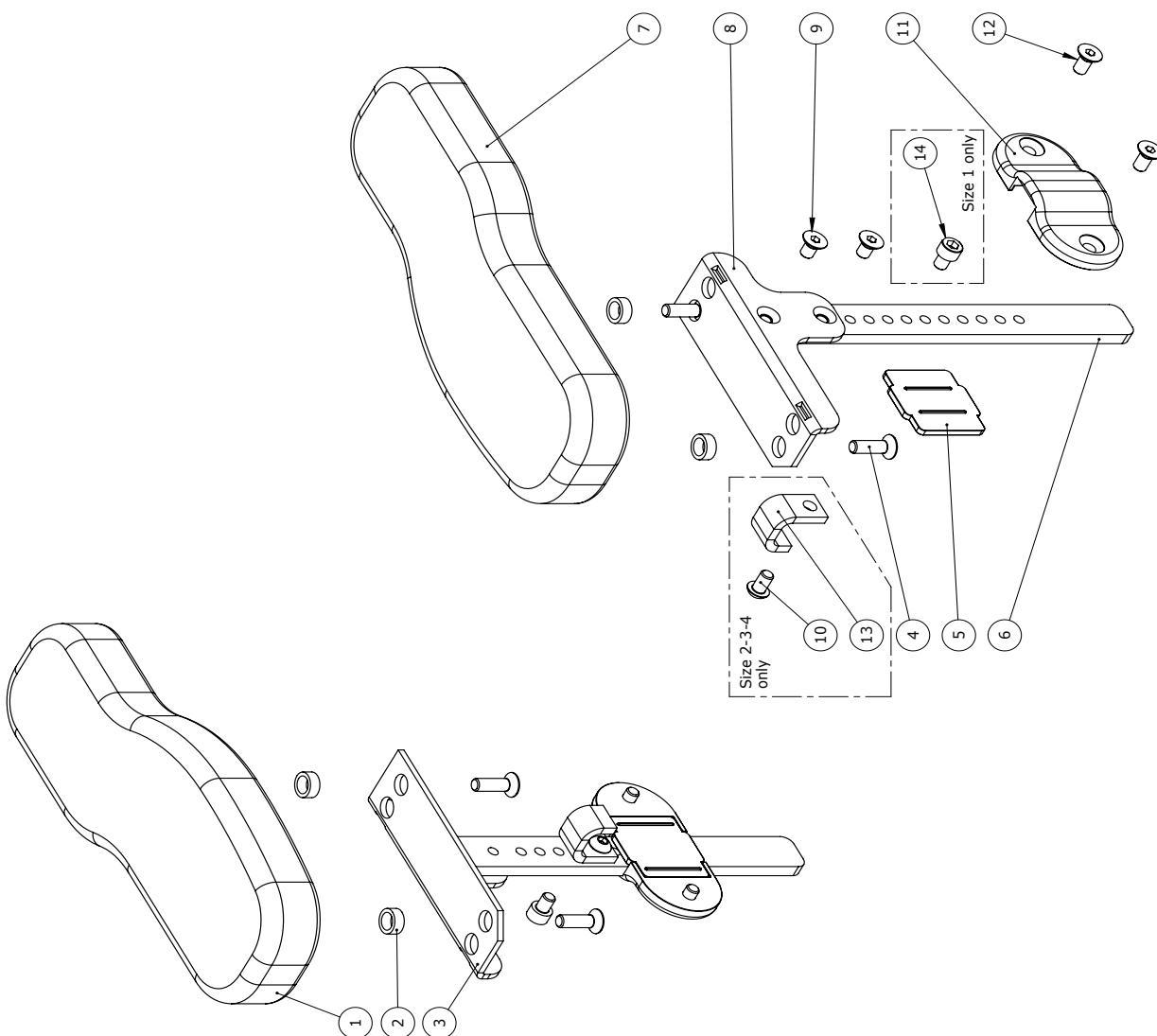
C:\PROM\TEGN\Exploder\Flamingo\79714

R82  <small>nothing compares to a smile</small> Title Accessories	Created by BDA Created date 01.11.99	Revision C Revision date 25.11.2015	Revision by PER Item no 79714
	Project		

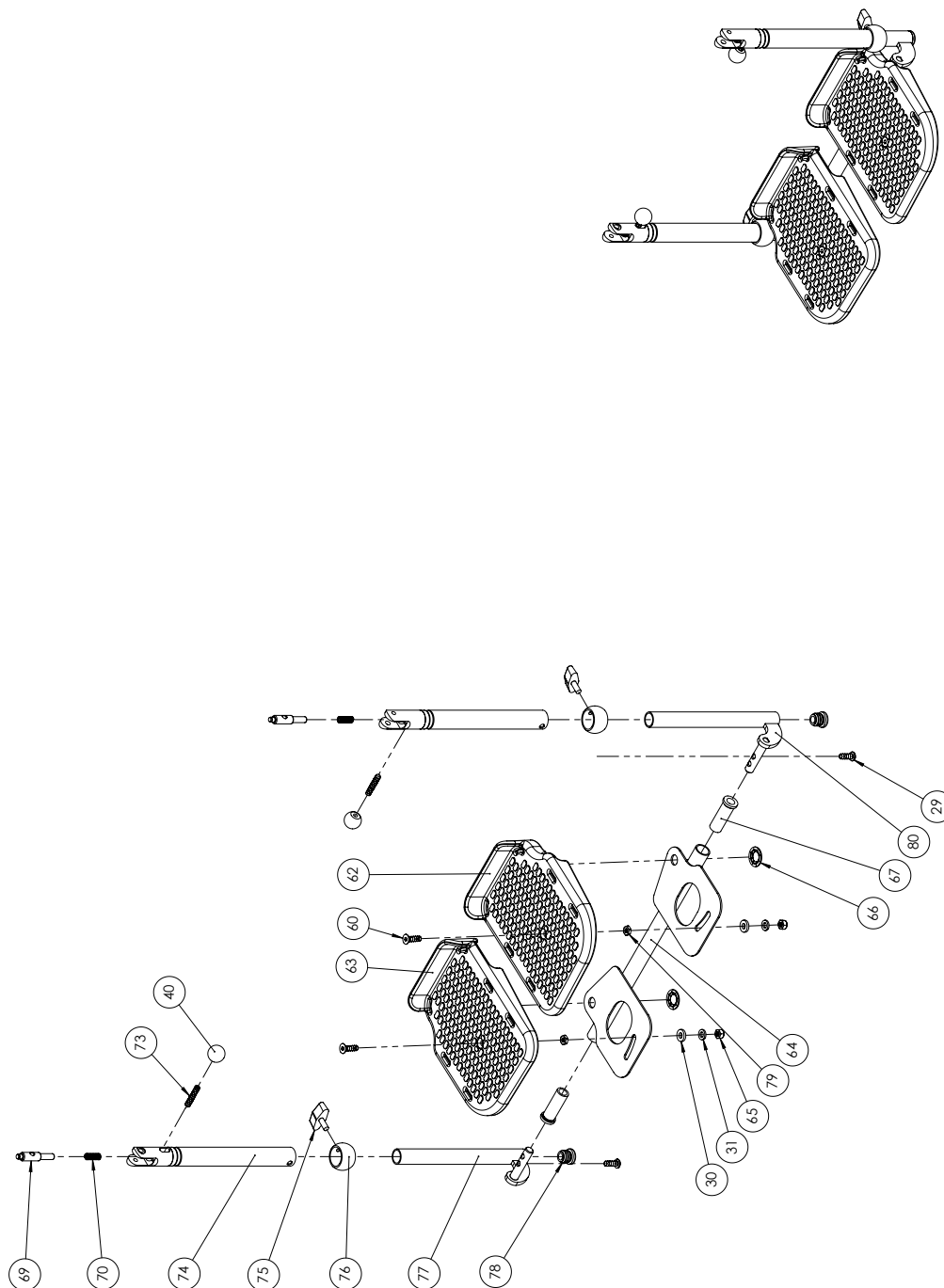
Position	No.	Description	Quantity	Unit of Measure	Ean code
129	880184-61H	Side upholstery, sz.4, right, blue PU	PCS	1	5707292615954
129	880182-61H	Side upholstery, sz.2, right, blue PU	PCS	1	5707292615916
129	880182-H	Upholst. F/right side, flam. 2	PCS	1	5707292254481
129	880181-61V	Side upholstery, sz.1, left, blue PU	PCS	1	5707292615909
129	880181-H	Upholst. F/right side,flam 1, grey PU	PCS	1	5707292254467
129	880184-H	Upholst. F/right side,flam. 4, grey PU	PCS	1	5707292254528
129	880183-61H	Side upholstery, sz.3, right, blue PU	PCS	1	5707292615930
129	880183-H	Upholst. F/right side,flam. 3, grey PU	PCS	1	5707292254504
130	880184-61V	Side upholstery, sz.4, left, blue PU	PCS	1	5707292615961
130	880182-61V	Side upholstery, sz.2, left, blue PU	PCS	1	5707292615923
130	880182-V	Upholst. F/left side, flam. 2	PCS	1	5707292254498
130	880181-61H	Side upholstery, sz.1, right, blue PU	PCS	1	5707292615893
130	880181-V	Upholst.f/left side flam. Sz.1, grey PU	PCS	1	5707292254474
130	880184-V	Upholst f/left side,flam. 4, grey PU	PCS	1	5707292254535
130	880183-61V	Side upholstery, sz.3, left, blue PU	PCS	1	5707292615947
130	880183-V	Upholst. F/left side, flam. 3, grey PU	PCS	1	5707292254511
139	71325	Backside size 4,right-Flamingo	PCS	1	5707292105097
139	71323	Backside size 2,right-Flamingo	PCS	1	5707292105073
139	71322	Backside size 1,right-Flamingo	PCS	1	5707292105066
139	71324	Backside size 3,right-Flamingo	PCS	1	5707292105080
140	71335	Backside size 4, left-Flamingo	PCS	1	5707292105134
140	71333	Backside size 2, left-Flamingo	PCS	1	5707292105110
140	71332	Backside size 1, left-Flamingo	PCS	1	5707292105103
140	71334	Backside size 3, left,flamingo	PCS	1	5707292105127
141	0609727	Stainless insex 6x12 uh	PCS	2	5707292138484
160	880129	Comode pan, Flamingo size 3+4	PCS	1	5707292134318
160	880128	Comode pan, Flamingo size 1+2	PCS	1	5707292134301
161	71344	Commode pan holder, left	PCS	1	5707292105202
161	71343	Commode pan holder, right	PCS	1	5707292105196
161	109114	Pottebøjle str.2, venstre	PCS	1	5707292576873
161	71338	Commode pan holder, left	PCS	1	5707292105141
162	71345	Commode pan holder, right	PCS	1	5707292105219
162	71342	Commode pan holder, left	PCS	1	5707292105189
162	109113	Pottebøjle str.2, Højre	PCS	1	5707292576866
162	71339	Commode pan holder, right	PCS	1	5707292105158
163	0659200	Button head screw 6*12 stainl.	PCS	4	5707292139436
164	71134	Distancepart for suction cup	PCS	4	5707292104397
165	2522015	Suction cup Ø80mm M6*12mm	PCS	4	5707292144461
166	1105060	Stainless washer 6mm	PCS	4	5707292140357
170	71371	Support rod STR.1 VENSTRE	PCS	1	5707292105394
170	71369	Support rod size 4, left	PCS	1	5707292436757
170	71367	Support rod STR.3 VENSTRE	PCS	1	5707292436771
170	71373	Support rod for size 2	PCS	1	5707292105417
171	71370	Support rod STR.1 HØJRE	PCS	1	5707292105387
171	71368	Support rod size 4, right	PCS	1	5707292436740
171	71366	Support rod STR. 3 HØJRE	PCS	1	5707292436764
171	71372	Support rod STR.2 HØJRE	PCS	1	5707292105400
172	6175361	Armrest table small, left	PCS	1	5707292189707
172	6175365	Armrest table large, left	PCS	1	5707292189721

173	6175359	Armrest table small, right	PCS	1	5707292189691
173	6175363	Armrest table large, right	PCS	1	5707292189714
174	71130-90	Bushing, white	PCS	2	5707292223593
175	71132	Locking socket, white	PCS	1	5707292104373
176	104377	Washer Ø15,5Ø5,3, h10,0	PCS	4	5707292568878
177	72134-90	Mounting for armrest, white	PCS	2	5707292223760
178	82408-90	Underlying plate armrest flam	PCS	2	5707292231482
179	0506519	Stainless blind rivet 4*12	PCS	2	5707292137388
180	6153700	Knob spring f.activity centre	PCS	2	5707292188601
181	1310552	Cover plugs k 5 natur	PCS	2	5707292581747
182	0603522	Insex ch M5*22 rf	PCS	4	5707292490988

R82 <small>nothing compares to a smile</small> Title	R82 A/S Parallelvej 3 8751 Gedved Denmark	Checked by Admin	Revision C	Revision date 31-03-2011
		Project Armrest for Flamingo	Item no. 104369	Revision date 28-01-2016



Position	Art. No.	Description	Unit of Measure	Quantity	Ean code
1	6175150	Armrest cushion, size 1, right	PCS	1	5707292189226
2	1310539	Distance piece 12/8,4*5mm	PCS	4	5707292423474
3	104360	Armrest bracket, right	PCS	1	5707292570703
4	0609730	Stainless insex 6*20 uh.	PCS	4	5707292138507
6	117054	Amrest bar	PCS	2	5707292611383
7	6175152	Armrest cushion, size 1, left	PCS	1	5707292189233
8	104359	Armrest bracket, left	PCS	1	5707292570697
9	0609760	Rustfri insex 6*10 uh. tuflok	PCS	4	5707292570796
10	0659005	Insex button head M6*10,stainl	PCS	2	5707292423740
13	117055	Brace	PCS	2	5707292611390
14	0602479	Insex M6*8, stainless	PCS	2	5707292465412
5+11+12	5001013	Plastic bag enclosing small	SET	1	5707292154378



R82 <small>Nothing compares to a smile</small> R82 A/S Tegløkkevej 3 8751 Gedved Denmark	Created by	Revision	Revision by
	Admin	C	fla
Project Footrest for Flamingo	Created date	Revision date	Revision date
	31-03-2011	08-10-2014	
	Item no.	79724	

Position	No.	Description	Quantity	Unit of Measure	Ean code
30	1310717	NYLON WASHER, NAT O17-8,4*2MM	2	PCS	5707292140821
40	3502008	KNOB HANDLE Ø20 M6	2	PCS	5707292146830
60	0609732	INSEX 6*22, STAINLESS	2	PCS	5707292409669
62*	71207	FOOTPLATE LEFT, FLAM. SZ 1-2	1	PCS	5707292104625
	71209	FOOTPLATE LEFT, FLAM. SZ 3-4	1	PCS	5707292104649
63*	71208	FOOTPLATE RIGHT, FLAM. SZ 1-2	1	PCS	5707292104632
	71210	FOOTPLATE RIGHT, FLAM. SZ 3-4	1	PCS	5707292104656
64*	71282	FOOTPLATE INLAY FLAM. SIZE 1	1	PCS	5707292104816
	71283	FOOTPLATE INLAY FLAM. SIZE 2	1	PCS	5707292104823
	71284	FOOTPLATE INLAY FLAM. SIZE 3	1	PCS	5707292104830
	71285	FOOTPLATE INLAY FLAM. SIZE 4	1	PCS	5707292104847
65	1631060	STAINLESS LOCK NUT 6MM	2	PCS	5707292141446
66	1109000	STARLOCK SKIVE M12, U/KAP, RF.	2	PCS	5707292140432
67	71119	FICTIONBUSH FOR FLAMINGO	2	PCS	5707292104267
69	71123	LOCK RATCHET	2	PCS	5707292104304
70	0310147	STAINLESS SPRING1*9,3*20MM*7,5	2	PCS	5707292135636
73	0806030	STAINLESS STOP SCREW 6*30MM	2	PCS	5707292140029
74*	71242	TELESCOPIC PIPE SZ. 1	2	PCS	5707292104687
	71243	TELESCOPIC PIPE SZ. 2-4	2	PCS	5707292104694
75	3503210	FINGER SCREW,WHITE M6X6	2	PCS	5707292147004
76	71118	BUSHING Ø22-18 FLAM.	2	PCS	5707292104250
77*	71272	TELESCOPE EXTENSION LEFT, SZ 1	1	PCS	5707292104755
	71273	TELESCOPE ARM LEFT 2	1	PCS	5707292104762
	71274	TELESCOPE EXT. LEFT, SZ 3+4	1	PCS	5707292104779
78	2502005	FERRULE D18*1,0-2,0 INT.WHITE	2	PCS	5707292144010
79	1750600	LOCK NUT, STAINLESS M6	2	PCS	5707292141477
80*	71277	TELESCOPE EXTENSION RIGHT	1	PCS	5707292104786
	71278	TELESCOPE EXTENSION RIGHT,SZ 2	1	PCS	5707292104793
	71279	TELESCOPE EXTENSION RIGHT,SZ3	1	PCS	5707292104809

*		CHOOSE SIZE
---	--	-------------

Position	Art. No.	Description	Unit of Measure	Quantity	Ean code
141	0609727	Stainless insex 6x12 uh	PCS	4	5707292138484
170	71371	Support rod STR.1 VENSTRE	PCS	1	5707292105394
170	71369	Support rod size 4, left	PCS	1	5707292436757
170	71367	Support rod STR.3 VENSTRE	PCS	1	5707292436771
170	71373	Support rod for size 2	PCS	1	5707292105417
171	71370	Support rod STR.1 HØJRE	PCS	1	5707292105387
171	71368	Support rod size 4, right	PCS	1	5707292436740
171	71366	Support rod STR. 3 HØJRE	PCS	1	5707292436764
171	71372	Support rod STR.2 HØJRE	PCS	1	5707292105400
172	6175361	Armrest table small, left	PCS	1	5707292189707
172	6175365	Armrest table large, left	PCS	1	5707292189721
173	6175359	Armrest table small, right	PCS	1	5707292189691
173	6175363	Armrest table large, right	PCS	1	5707292189714
174	71130-90	Bushing, white	PCS	2	5707292223593
175	71132	Locking socket,white	PCS	1	5707292104373
176	104377	Washer Ø15,5Ø5,3, h10,0	PCS	4	5707292568878
177	72134-90	Mounting for armrest, white	PCS	2	5707292223760
178	82408-90	Underlying plate armrest flam	PCS	2	5707292231482
179	0506519	Stainless blind rivet 4*12	PCS	2	5707292137388
180	6153700	Knob spring f.activity centre	PCS	2	5707292188601
181	1310552	Cover plugs k 5 natur	PCS	2	5707292581747
182	0603522	Insex ch M5*22 rf	PCS	4	5707292490988