

high-low:x

Exploded views / Part lists

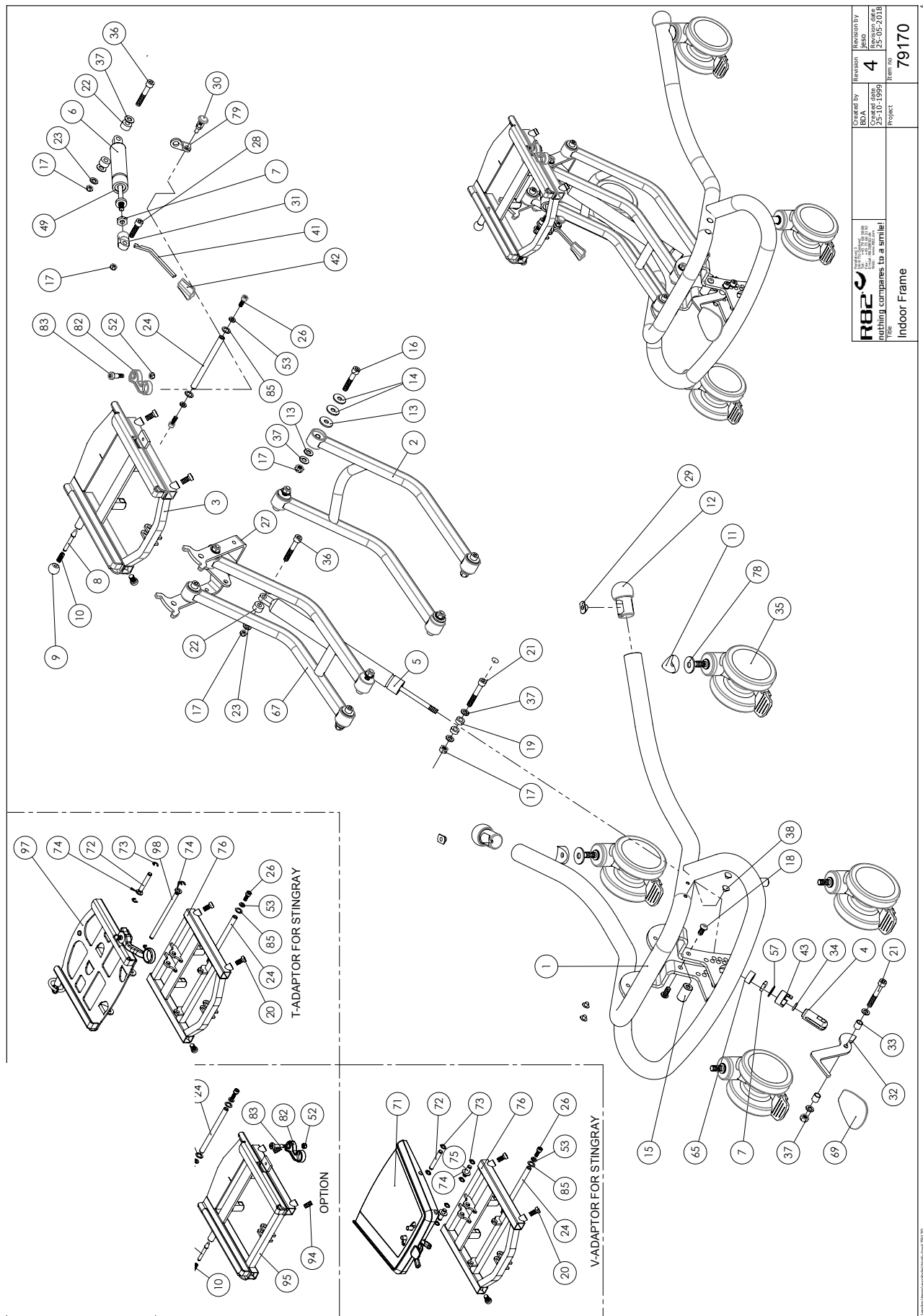
08.2018

On the following pages you will find the parts used to assemble this product. Please note that some spare parts cannot be purchased individually but are part of a complete kit. Please also note that for some spare parts extra delivery time may occur.



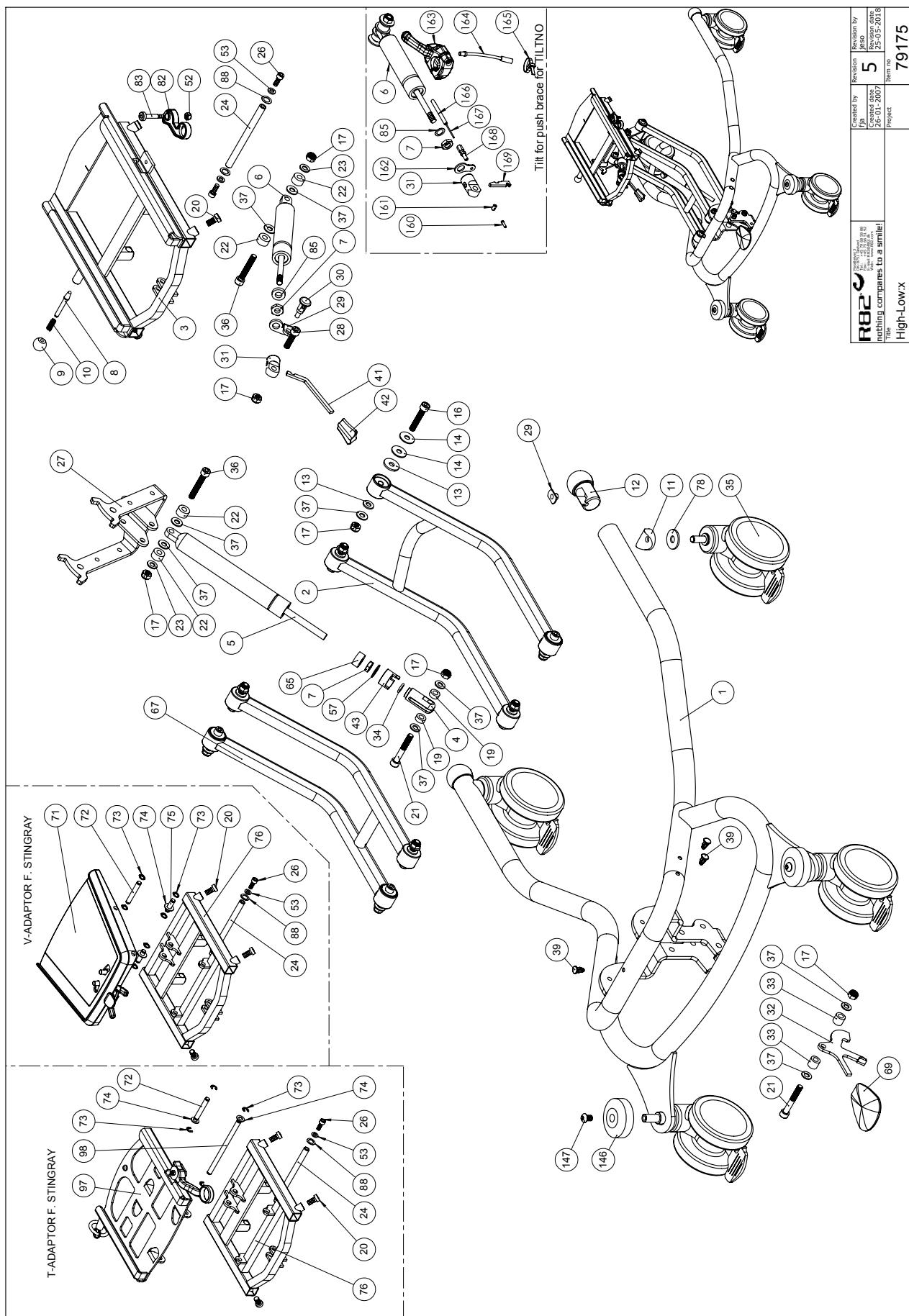
Contents

High-low:x size 1, indoor	3
High-low:x size 2, indoor	6
High-low:x size 2, indoor, hydraulic	9
High-low:x size 3, indoor, power.....	12
High-low:x size 1, outdoor	15
High-low:x size 2, outdoor	18
Foot supports	22



Position	No.	Description	Quantity	Unit of Measure	Ean code
1	82820-60	FRAME, BLACK MOTHER-OF-PEARL	1	PCS	5707292459718
2	82903-60	CARRY ARM, WELDED, HIGH-LOW 2	1	PCS	5707292459404
3	75600-60	T-frame, x:panda 1+2	1	PCS	5707292459541
4	6118822	HORIZONTAL RELEASE	1	PCS	5707292186744
5	2206120	GASSPRING 1200N	1	PCS	5707292143419
6	2201500	BLOC-O-LIFT 9127MP 500 N	1	PCS	5707292143181
7	1761000	COUNTER NUT 10*1,0 FINE THREAD	1	PCS	5707292141538
8	6113000	SPINDLE, T-PART/FRAME	1	PCS	5707292186362
9	3502008	KNOB HANDLE Ø20 M6	1	PCS	5707292146830
10	0310100	PRESSURESPRING 0,9*8*23*10,5V	1	PCS	5707292135513
11	82894	Saddle washer	2	PCS	5707292387578
12	82829-50	BALL Ø40, BLUE	2	PCS	5707292231871
13	1310705	NYLON WASHER, WHITE, Ø25*8,4*2,5	16	PCS	5707292140791
14	1108000	WASHER 8MM	16	PCS	5707292140388
15	82808	ASSEMBLY BUSH	1	PCS	5707292125224
16	0603500	INSEX SCREW 8*45	8	PCS	5707292138231
17	1607000	LOCK NUT 8MM, LARGE PACK	13	PCS	5707292141378
18	0661500	BUTTON HEAD SCREW 8*16 STAINL.	2	PCS	5707292139559
19	1350000	DISTANCEPART BLACK 6*15*8,2 MM	2	PCS	5707292140876
20	0603540	Insex low head M8x16 stainless	1	PCS	5707292412485
21	0603600	INSEX SCREW 8*55	2	PCS	5707292138262
22	1350100	DISTANCE PART BLACK 8,2*18*10	4	PCS	5707292140937
23	1103200	FAZET WASHER 8MM	4	PCS	5707292140296
24	82806	AXLE	1	PCS	5707292125200
26	0602200	INSEX SCREW 6*16	2	PCS	5707292138095
27	76800-60	KIP BRACE, BLACK	1	PCS	5707292497116
28	0615010	INSEX M8*30 FZB, SHORTENED	1	PCS	5707292367990
29	1600525	STAINL. WELDING NUT W/FLANGE	2	PCS	5707292141149
30	0380184	SPEC. LOCKING HOUSE M10*1,28MM	1	PCS	5707292366030
31	6118820	HOUSE FOR GASSPRING, BLACK	1	PCS	5707292186720
32	82851	ARM FOR FOOT PEDAL	1	PCS	5707292125507
33	82859	BUSH FOR FOOT PEDAL	2	PCS	5707292125552
34	0108000	O-RINGS O13*2,5 QUALITY XP 70	1	PCS	5707292135124
35	3006937	100MM DOUBLE WHEEL WITH BRAKE	4	PCS	5707292548030
36	0603555	Insex M8*50, 12.9, zinkflage	2	PCS	5707292498892
37	1102000	PLANING WASHER 8MM	14	PCS	5707292140227
38	1310540	COVERING PUSHBUTTON, BLACK	4	PCS	5707292140692
40	2504000	FERRULE E15*1,0-2,0 INT.BLACK	2	PCS	5707292144102
41	2200013	ARM F. RELEASE, F.INDOOR FRAME	1	PCS	5707292142993
42	2200030	BUTTON FOR RELEASE ARM	1	PCS	5707292143051
43	82866	LOCK FOR RELEASE HEAD	1	PCS	5707292125606
49	1310712	NYLON WASHER, NATURE	1	PCS	5707292356345
52	1606500	LOCK NUT 6 MM	1	PCS	5707292141361
53	1106000	WASHER 6MM	2	PCS	5707292140371
57	1102500	PLANNING WASHER 10 MM	1	PCS	5707292140234
65	1310630	DISTANCE PIECE, Ø10,3*22*10MM	1	PCS	5707292140753
67	82888-60	CARRY ARM, HIGH-LOW,BLACK	1	PCS	5707292459695
69	3470335	RELEASE BUTTON 4*8MM	1	PCS	5707292146632
71	79367	V-frame, complete	1	PCS	5707292502797

72	76043	Axle for springstopper	1	PCS	5707292481450
73	1145060	Locking washer, axle stainless	4	PCS	5707292375056
74	1310711	Nylon washer 15*8,4*1,5mm	1	PCS	5707292429933
75	76044	Axle for v-frame	1	PCS	5707292491503
76	76370-60	T-frame, Stingray on High/low	1	PCS	5707292546029
78	1108050	WASHER M10, DIN9021	2	PCS	5707292140401
79	82481	SAFETY MOUNTING FOR GASSPRING	1	PCS	5707292124500
82	82880	HANDLE FOR ADAPTOR	1	PCS	5707292361318
83	0683810	PASBOLT M/INDV.6KT. 8*12 (M6)	1	PCS	5707292361929
85	1310712	NYLON WASHER, NATURE	1	PCS	5707292356345
94	0603540	INSEX LOW HEAD M8x40 STAINLESS	4	PCS	5707292412485
95	75600-60	T-FRAME, X:PANDA 1+2	1	PCS	5707292459541
130	1101000	CENTER SPRING WASHER 8MM	1	PCS	5707292140173



R82 <small>nothing compares to a smile!</small> <small>High-Low X</small>	Created by JPB Approved by 26-03-2007	Revision 5	Revision by JPB Approved by 25-05-2018
		Project 79175	Item no 79175

Position	No.	Description	Quantity	Unit of Measure	Ean code
1	75660-60	FRAME, HIGH-LOW 2	1	PCS	5707292466716
2	82903-60	CARRY ARM, WELDED, HIGH-LOW 2	1	PCS	5707292459404
3	75630-60	T-FRAME, BLACK	1	PCS	5707292457547
4	6118822	HORIZONTAL RELEASE	1	PCS	5707292186744
5	2205400	BLOC-O-LIFT 9235YS 1400 N	1	PCS	5707292460172
6	2201500	BLOC-O-LIFT 9127MP 500 N	1	PCS	5707292143181
7	1761000	COUNTER NUT 10*1,0 FINE THREAD	1	PCS	5707292141538
8	6113000	SPINDLE, T-PART/FRAME	1	PCS	5707292186362
9	3502008	KNOB HANDLE Ø20 M6	1	PCS	5707292146830
10	0310100	PRESSURESPRING 0,9*8*23*10,5V	1	PCS	5707292135513
11	82894	SADDLE WASHER	2	PCS	5707292387578
12	82829-50	BALL Ø40, BLUE	2	PCS	5707292231871
13	1310705	NYLON WASHER, WHITE, Ø25*8,4*2,5	16	PCS	5707292140791
14	1108000	WASHER 8MM	16	PCS	5707292140388
16	0603500	INSEX SCREW 8*45	8	PCS	5707292138231
17	1607000	LOCK NUT 8MM, LARGE PACK	15	PCS	5707292141378
19	1350000	DISTANCEPART BLACK 6*15*8,2 MM	2	PCS	5707292140876
20	0603540	INSEX LOW HEAD M8x40 STAINLESS	4	PCS	5707292412485
21	0603600	INSEX SCREW 8*55	2	PCS	5707292138262
22	1350100	DISTANCE PART BLACK 8,2*18*10	4	PCS	5707292140937
23	1103200	FAZET WASHER 8MM	6	PCS	5707292140296
24	0683803	PASBOLT M/INDV.6KT.10*25 (M8)	2	PCS	5707292460066
26	0602200	INSEX SCREW 6*16	2	PCS	5707292138095
27	76800-60	KIP BRACE, BLACK	1	PCS	5707292497116
28	0615010	INSEX M8*30 FZB, SHORTENED	1	PCS	5707292367990
29	1600525	STAINL. WELDING NUT W/FLANGE	2	PCS	5707292141149
30	0380184	SPEC. LOCKING HOUSE M10*1,28MM	1	PCS	5707292366030
31	6118820	HOUSE FOR GASSPRING, BLACK	1	PCS	5707292186720
32	82851	ARM FOR FOOT PEDAL	1	PCS	5707292125507
33	82859	BUSH FOR FOOT PEDAL	2	PCS	5707292125552
34	0108000	O-RINGS Ø13*2,5 QUALITY XP 70	1	PCS	5707292135124
35	3006930	100 MM GREY DOUBLE WHEEL	4	PCS	5707292145918
36	0603550	INSEX SCREW 8*50	2	PCS	5707292138255
37	1102000	PLANING WASHER 8MM	14	PCS	5707292140227
38	1310540	COVERING PUSHBUTTON, BLACK	4	PCS	5707292140692
39	1310528	COVERING STUD, BLACK 13MM	1	PCS	5707292470348
41	2200013	ARM F. RELEASE, F.INDOOR FRAME	1	PCS	5707292142993
42	2200030	BUTTON FOR RELEASE ARM	1	PCS	5707292143051
43	82866	LOCK FOR RELEASE HEAD	1	PCS	5707292125606
52	1606500	LOCK NUT 6 MM	1	PCS	5707292141361
53	1106000	WASHER 6MM	2	PCS	5707292140371
57	1102500	PLANING WASHER 10 MM	1	PCS	5707292140234
65	1310630	DISTANCE PIECE, Ø10,3*22*10MM	1	PCS	5707292140753
67	82888-60	CARRY ARM, HIGH-LOW, BLACK	1	PCS	5707292459695
69	3470335	RELEASE BUTTON 4*8MM	1	PCS	5707292146632
71	79367	V-frame, complete	1	PCS	5707292502797
72	76043	Axle for springstopper	1	PCS	5707292481450
73	1145060	Locking washer, axle stainless	4	PCS	5707292375056
74	1310711	Nylon washer 15*8,4*1,5mm	1	PCS	5707292429933

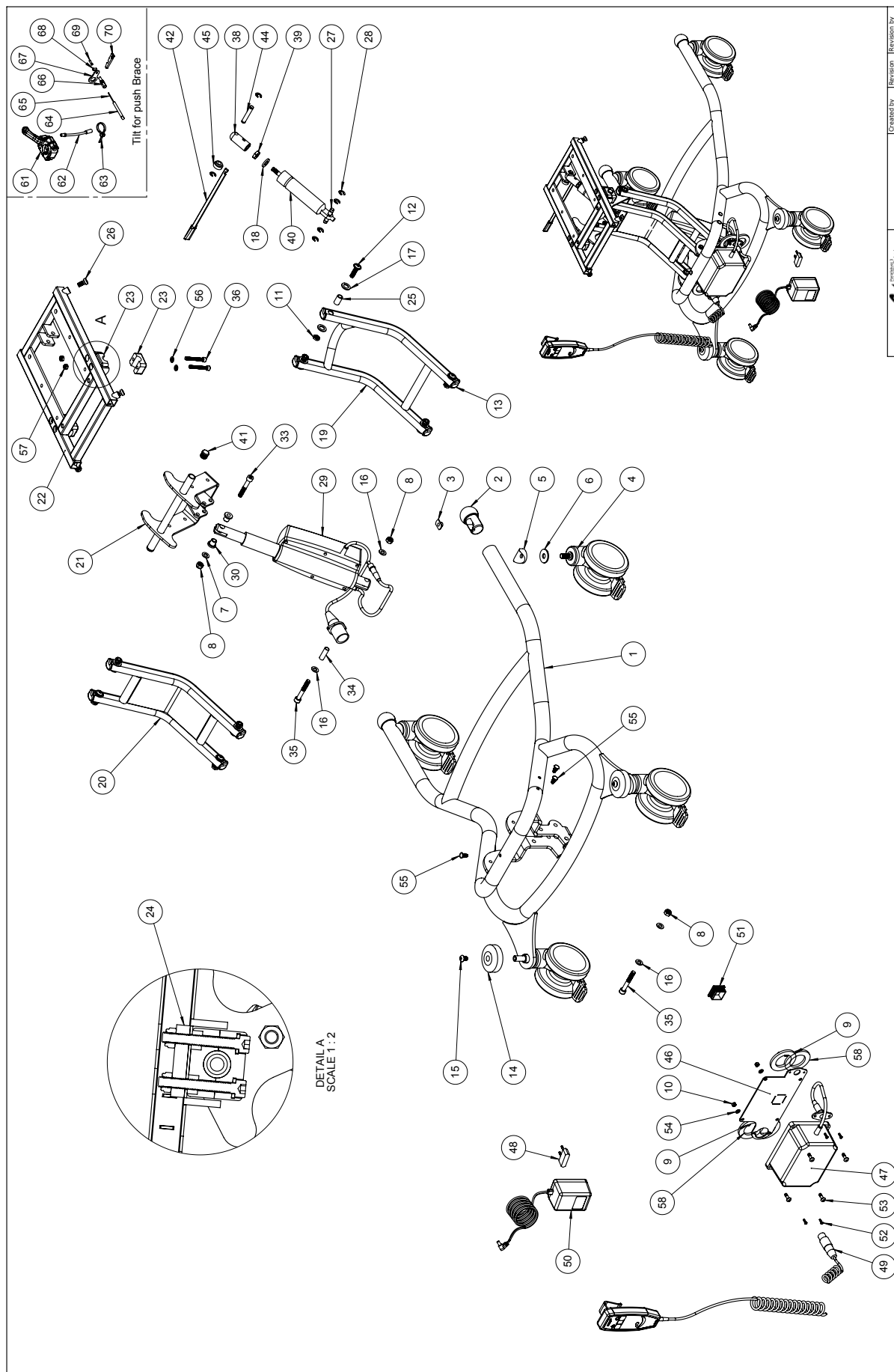
75	76044	Axle for v-frame	1	PCS	5707292491503
76	76370-60	T-frame, Stingray on High/low	1	PCS	5707292546029
78	1108050	WASHER M10, DIN9021	2	PCS	5707292140401
82	82880	HANDLE FOR ADAPTOR	1	PCS	5707292361318
83	0683810	PASBOLT M/INDV.6KT. 8*12 (M6)	1	PCS	5707292361929
85	1310712	NYLON WASHER, NATURE	1	PCS	5707292356345
88	1310640	WASHER, NATURE Ø16*10*0,5MM	2	PCS	5707292140760
110	2500520	TPE cover ø20mm	2	PCS	5707292401649
111	75657	HAND BRACE FOR HIGH-LOW	1	PCS	5707292459633
130	1101000	CENTER SPRING WASHER 8MM	1	PCS	5707292140173
146	2522100	BLACK BUMPWHEEL FOR PONY 60MM	2	PCS	5707292144478
147	0661100	BUTTON HEAD SCREW 8*12	2	PCS	5707292139511

Position	No.	Description	Quantity	Unit of Measure	Ean code
1	75612-60	HIGH/LOW 2 HYDRAULIC	1	PCS	5707292459381
2	82903-60	BÆREARM SVEJST HIGH/LOW 2	1	PCS	5707292459404
3	75630-60	T-RAMME,X-PANDA 3, MALET	1	PCS	5707292457547
6	2201500	BLOC-O-LIFT 9127MP 500 N	1	PCS	5707292143181
7	1761000	COUNTER NUT 10*1,0 FINE THREAD	1	PCS	5707292141538
8	6113000	SPINDLE, T-PART/FRAME	1	PCS	5707292186362
9	3502008	KNOB HANDLE Ø20 M6	1	PCS	5707292146830
10	0310100	PRESSURESPRING 0,9*8*23*10,5V	1	PCS	5707292135513
11	82894	Saddle washer	2	PCS	5707292387578
12	82829-50	BALL Ø40, BLUE	2	PCS	5707292231871
13	1310705	NYLON WASHER, WHITE, Ø25*8,4*2,5	16	PCS	5707292140791
14	1108000	WASHER 8MM	16	PCS	5707292140388
16	0603500	INSEX SCREW 8*45	8	PCS	5707292138231
17	1607000	LOCK NUT 8MM, LARGE PACK	12	PCS	5707292141378
18	0603200	INSEX SCREW 8*40	2	PCS	5707292138224
19	1750800	LOCK NUT, STAINLESS M8	2	PCS	5707292141484
20	0603540	INSEX LOW HEAD M8x40 STAINLESS	4	PCS	5707292412485
22	1350100	DISTANCE PART BLACK 8,2*18*10	2	PCS	5707292140937
23	1103200	FAZET WASHER 8MM	2	PCS	5707292140296
24	0683803	PASBOLT M/INDV.6KT.10*25 (M8)	2	PCS	5707292460066
26	0602200	INSEX SCREW 6*16	2	PCS	5707292138095
27	76800-60	TILT BRACE, BLACK	1	PCS	5707292497116
28	0615010	INSEX M8*30 FZB, SHORTENED	1	PCS	5707292367990
29	1600525	STAINL. WELDING NUT W/FLANGE	2	PCS	5707292141149
30	0380184	SPEC. LOCKING HOUSE M10*1,28MM	1	PCS	5707292366030
31	6118820	HOUSE FOR GASSPRING, BLACK	1	PCS	5707292186720
35	3006930	100 MM GREY DOUBLE WHEEL	4	PCS	5707292145918
36	0603550	INSEX SCREW 8*50	1	PCS	5707292138255
37	1102000	PLANING WASHER 8MM	10	PCS	5707292140227
38	1310540	COVERING PUSHBUTTON, BLACK	4	PCS	5707292140692
39	1310528	COVERING STUD, BLACK 13MM	1	PCS	5707292470348
41	2200013	ARM F. RELEASE, F.INDOOR FRAME	1	PCS	5707292142993
42	2200030	BUTTON FOR RELEASE ARM	1	PCS	5707292143051
49	1310712	NYLON WASHER, NATURE	1	PCS	5707292356345
52	1606500	LOCK NUT 6 MM	1	PCS	5707292141361
53	1106000	WASHER 6MM	2	PCS	5707292140371
55	0641200	BUTTON HEAD SCREW 6*12	4	PCS	5707292139252
56	75615	BUET BESLAG FOR HYDR.	2	PCS	5707292460202
57	2208000	COMPACT MK5 HYDRAULIC PUMP	1	PCS	5707292461148
58	1151000	LOCK WASHER FOR 10MM AXLE	2	PCS	5707292140616
59	75620	STIFT FOR LIFTARM	1	PCS	5707292460226
64	75668-60	ARM FOR HYDRAULIC, BLACK	1	PCS	5707292479631
65	2500516	GRIP 87.00 MM LENGTH	1	PCS	5707292356727
67	75616-60	BÆREARM HIGH/LOW, HYDRAULIK	1	PCS	5707292460158
78	1108050	WASHER M10, DIN9021	2	PCS	5707292140401
79	82481	SAFETY MOUNTING FOR GASSPRING	1	PCS	5707292124500
82	82880	HANDLE FOR ADAPTOR	1	PCS	5707292361318
83	0683810	PASBOLT M/INDV.6KT. 8*12 (M6)	1	PCS	5707292361929
88	1310640	WASHER, NATURE Ø16*10*0,5MM	4	PCS	5707292140760

Highlow : x _____



130	1101000	CENTER SPRING WASHER 8MM	1	PCS	5707292140173
146	2522100	BLACK BUMPWHEEL FOR PONY 60MM	2	PCS	5707292144478
147	0661100	BUTTON HEAD SCREW 8*12	2	PCS	5707292139511



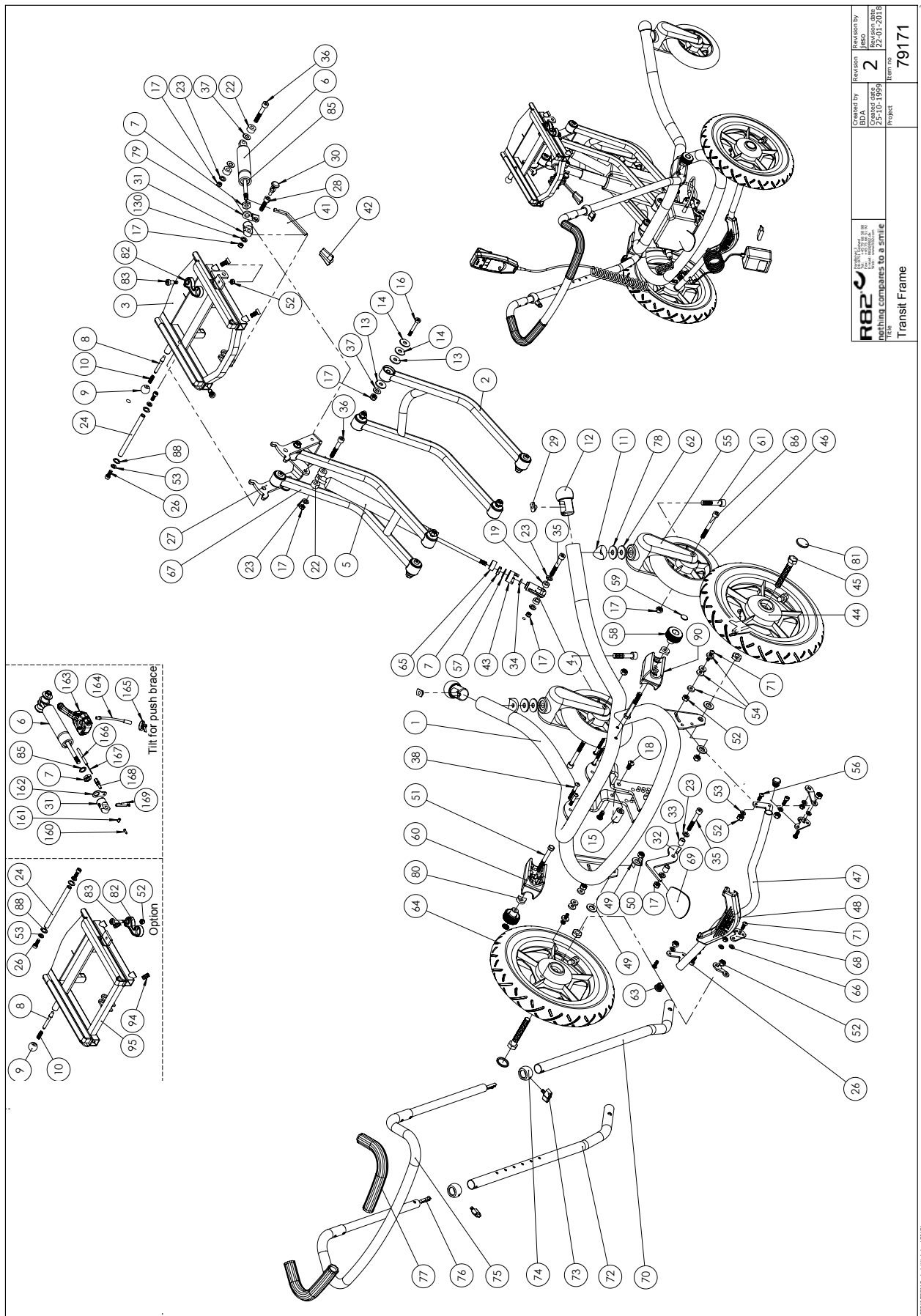
R82 <small>Indoor Frame, Electr. Actuator</small> nothing compares to a smile	Created by	Revision	Revision by
	JLB	4	JLB
	26-01-2007		22-03-2018
	Project	Item no	
Indoor Frame, Electr. Actuator		79174	


Position	No.	Description	Quantity	Unit of Measure	Ean code
1	75670-60	Frame High/Low X 3	PCS	1	5707292489715
2	82829-50	BALL Ø40, BLUE	PCS	2	5707292231871
3	1600525	STAINL. WELDING NUT W/FLANGE	PCS	2	5707292141149
4	3006930	100 MM GREY DOUBLE WHEEL	PCS	4	5707292145918
5	82894	Saddle washer	PCS	2	5707292387578
6	1108050	WASHER M10, DIN9021	PCS	2	5707292140401
7	1103200	FAZET WASHER 8MM	PCS	6	5707292140296
8	1607000	LOCK NUT 8MM, LARGE PACK	PCS	3	5707292141378
9	1606250	SELF-LOCKING NUT 3MM	PCS	4	5707292408396
10	1606300	LOCK NUT 5 MM	PCS	4	5707292141354
11	1750800	LOCK NUT, STAINLESS M8	PCS	8	5707292141484
12	0663031	BUTTON HEAD 8*30, WOMBAT	PCS	8	5707292139610
13	82946	END PIECE 15*30, WOMBAT	PCS	8	5707292126016
14	2522100	BLACK BUMPWHEEL FOR PONY 60MM	PCS	2	5707292144478
15	0661100	BUTTON HEAD SCREW 8*12	PCS	2	5707292139511
16	1310540	COVERING PUSHBUTTON, BLACK	PCS	4	5707292140692
17	1310710	NYLON WASHER	PCS	16	5707292140807
18	1310712	NYLON WASHER, NATURE	PCS	1	5707292356345
19	82790-60	Carryarm black mother of pearl	PCS	1	5707292434609
20	77564-60	Carryarm, highlow 2, painted	PCS	1	5707292489838
21	77562-60	Tipbracket, Seatunit	PCS	1	5707292489791
22	77572-60	SEAT FRAME HIGHLOW 2	PCS	1	5707292490827
23	2521840	PIPE HOLDER F/16MMSQUARE,BLACK	PCS	4	5707292399236
24	77571	Fastening bracket	PCS	2	5707292489982
25	82933	BEARING BUSHING, WOMBAT	PCS	8	5707292125880
26	0603540	INSEX LOW HEAD M8x16 STAINLESS	PCS	4	5707292412485
27	80924	Ø8*40 SPEC LOCKING PIN,WOMBAT	PCS	1	5707292111401
28	1145070	LOCK WASHER 7MM	PCS	6	5707292140586
29	2222138	ACTUATOR LA32	PCS	1	5707292589354
30	82848	BUSH	PCS	2	5707292125484
33	0603550	INSEX SCREW 8*50	PCS	1	5707292138255
34	6108200	PVC PIPE PA11 Ø10/Ø8 MM	METER	0,03	5707292185655
35	0603600	INSEX SCREW 8*55	PCS	3	5707292138262
36	0602445	INSEX M6*45 FZB	PCS	4	5707292138156
38	6118821	HORIZONTAL RELEASE, WOMBAT	PCS	1	5707292186737
39	1761000	COUNTER NUT 10*1,0 FINE THREAD	PCS	1	5707292141538
40	2201500	BLOC-O-LIFT 9127MP 500 N	PCS	1	5707292143181
41	2501600	FERRULE D15*1,0 BLACK	PCS	2	5707292143969
42	2200021	ARM FOR HEIGHTADJUSTMENT	PCS	1	5707292143044
44	80921	LOCKING PIN, WOMBAT	PCS	1	5707292111371
45	77574	Sleeve f. Strike	PCS	1	5707292490773
46	77576	Battery console HighLow	PCS	1	5707292490759
47	2222110	BATTERYBOKS BA18027	PCS	1	5707292492258
48	2222165	PLUG F/DK	PCS	1	5707292492388
49	2220600	HANDSET W/R82 PRINT & CHARGING	PCS	1	5707292492241
50	2222160	CHARGER WO/PLUG	PCS	1	5707292492296
51	2505000	FERRULE E30*301,0-2,0 INT.BLAC	PCS	1	5707292144140
52	1902590	CROSSHEAD SCREW M3*10, FZB	PCS	4	5707292408389
53	1902760	CROSS-HEADED SCREW 5*16 MM	PCS	4	5707292142146

Highlow : x _____



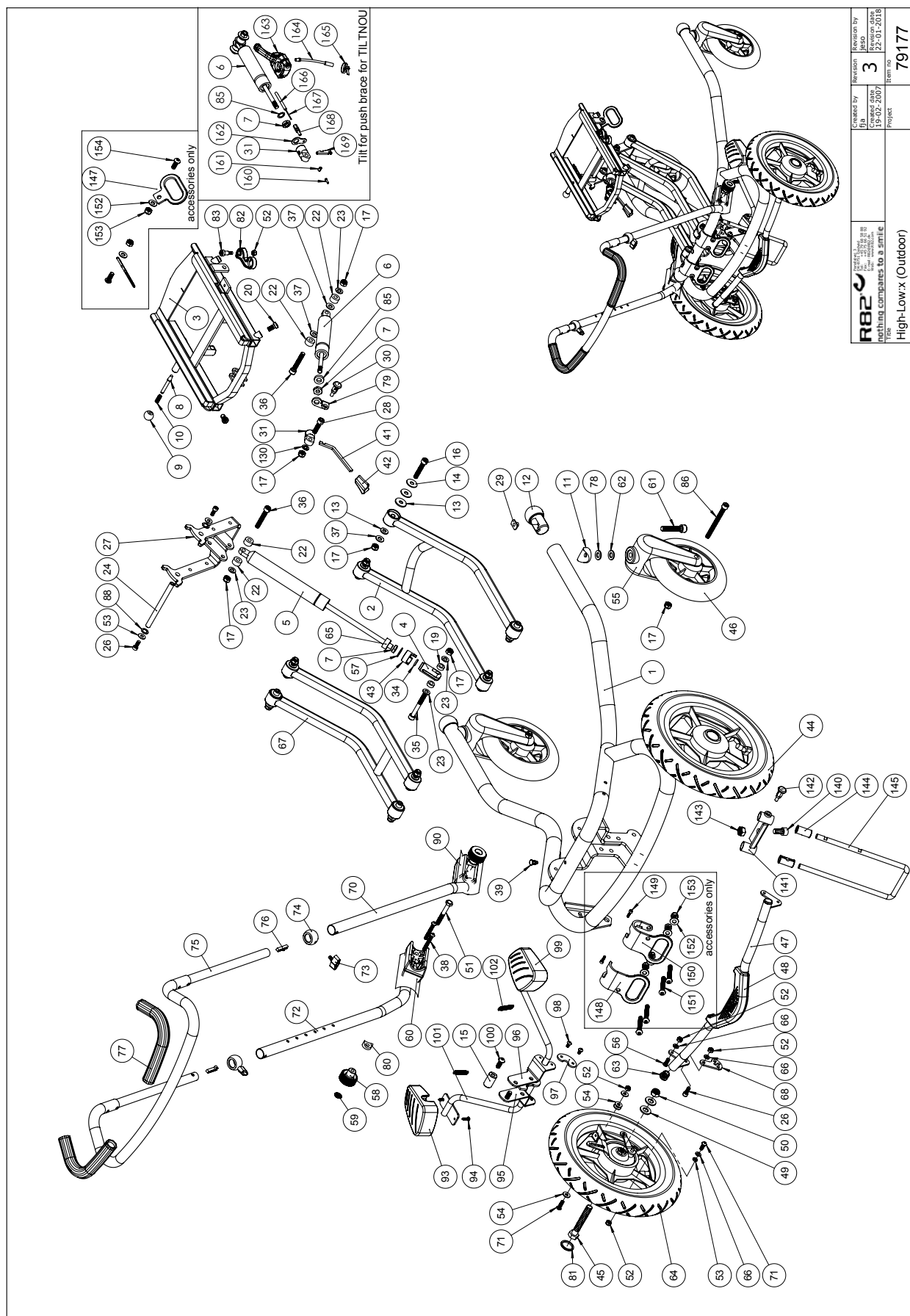
54	1102900	FAZET WASHER 5 MM	PCS	4	5707292140272
55	1310528	COVERING STUD, BLACK 13MM	PCS	1	5707292470348
56	1103000	FAZET WASHER 6MM	PCS	4	5707292140289
57	1606500	LOCK NUT 6 MM	PCS	4	5707292141361
58	1102800	FAZET WASHER 4MM	PCS	4	5707292140265



 nothing compares to a smile	revised 3 for 1479 20 00 by 1479 20 00 from 1479 20 00	Created by BDA	Revision 2	Revision by ISO
		Created date 25-10-1999		Revision date 22-01-2018
	Title Transit Frame		Project 79171	Item no

Position	No.	Description	Quantity	Unit of Measure	Ean code
1	82656-60	TRANSITSTEL, SORT PERLEMOR	1	PCS	5707292460295
2	82903-60	CARRY ARM, WELDED, HIGH-LOW 2	1	PCS	5707292459404
3	76855-60	T-frame, transport, painted	1	PCS	5707292528162
4	6118822	HORIZONTAL RELEASE	1	PCS	5707292186744
5	2206120	GASSPRING 1200N	1	PCS	5707292143419
6	2201500	BLOC-O-LIFT 9127MP 500 N	1	PCS	5707292143181
7	1761000	COUNTER NUT 10*1,0 FINE THREAD	1	PCS	5707292141538
8	6113000	SPINDLE, T-PART/FRAME	1	PCS	5707292186362
9	3502008	KNOB HANDLE Ø20 M6	1	PCS	5707292146830
10	0310100	PRESSURESPRING 0,9*8*23*10,5V	1	PCS	5707292135513
11	82894	Saddle washer	2	PCS	5707292387578
12	82829-50	BALL Ø40, BLUE	2	PCS	5707292231871
13	1310705	NYLON WASHER, WHITE, Ø25*8,4*2,5	16	PCS	5707292140791
14	1108000	WASHER 8MM	16	PCS	5707292140388
15	82808	SAMLEBØSNING	1	PCS	5707292125224
16	0603500	INSEX SCREW 8*45	8	PCS	5707292138231
17	1607000	LOCK NUT 8MM, LARGE PACK	15	PCS	5707292141378
18	0661500	BUTTON HEAD SCREW 8*16 STAINL.	2	PCS	5707292139559
19	1350000	DISTANCEPART BLACK 6*15*8,2 MM	2	PCS	5707292140876
22	1350100	DISTANCE PART BLACK 8,2*18*10	4	PCS	5707292140937
23	1103200	FAZET WASHER 8MM	8	PCS	5707292140296
24	82806	AXLE	1	PCS	5707292125200
26	0602200	INSEX SCREW 6*16	2	PCS	5707292138095
27	76800	Tip brace, High-Low	1	PCS	5707292497031
28	0615010	INSEX M8*30 FZB, SHORTENED	1	PCS	5707292367990
29	1600525	STAINL. WELDING NUT W/FLANGE	2	PCS	5707292141149
30	0380184	SPEC. LOCKING HOUSE M10*1,28MM	1	PCS	5707292366030
31	6118820	HOUSE FOR GASSPRING, BLACK	1	PCS	5707292186720
32	82851	ARM FOR FOOT PEDAL	1	PCS	5707292125507
33	82859	BUSH FOR FOOT PEDAL	2	PCS	5707292125552
34	0108000	O-RINGS Ø13*2,5 QUALITY XP 70	1	PCS	5707292135124
35	0603600	INSEX SCREW 8*55	2	PCS	5707292138262
36	0603550	INSEX SCREW 8*50	2	PCS	5707292138255
37	1102000	PLANING WASHER 8MM	10	PCS	5707292140227
38	0645645	BUTTON HEAD M6*45 ZN/BLACK	4	PCS	5707292139351
41	2200013	ARM F. RELEASE, F.INDOOR FRAME	1	PCS	5707292142993
42	2200030	BUTTON FOR RELEASE ARM	1	PCS	5707292143051
43	82866	LOCK FOR RELEASE HEAD	1	PCS	5707292125606
44	3003510	12½*2 1/4" BR/HØJ, HIGH-LOW	1	PCS	5707292397492
45	1902380	STEEL SET SCREW 12*80MM	2	PCS	5707292142030
46	3007910	180*45 BLACK/PNEUM. WHEEL	2	PCS	5707292146045
47	82840	Brake brace	1	PCS	5707292125415
48	82830	BRAKE PEDAL, INDOOR FRAME	1	PCS	5707292125347
49	1101600	CENTER SPRING WASHER 12MM	4	PCS	5707292140197
50	1604500	STEEL NUT 12MM, LARGE PACK	2	PCS	5707292141309
51	1902320	STEEL SET SCREW 8*70MM	2	PCS	5707292142023
52	1606500	LOCK NUT 6 MM	1	PCS	5707292141361
53	1106000	WASHER 6MM	2	PCS	5707292140371
54	1125618	SCREENWASHER FZ6*18*3MM	8	PCS	5707292140494

55	2965155	FRONTFORK 200MM, BLACK	2	PCS	5707292144935
56	0641620	BUTTON HEAD SCREW 6*20	4	PCS	5707292139276
57	1102500	PLANNING WASHER 10 MM	1	PCS	5707292140234
58	3470400	HAND GRIP WITHOUT COVER	2	PCS	5707292146663
59	1109500	STARLOCK WASHER WITH CAPE 6	2	PCS	5707292140449
60	82828	HAND BRACE HOLDER, HIGH-LOW	1	PCS	5707292125330
61	0606000	INSEX SCREW 10*50	2	PCS	5707292138408
62	1103400	FAZET WASHER 10 MM	2	PCS	5707292140319
63	2502002	FERRULE D18*0,8-2,5 BLACK	2	PCS	5707292433947
64	3004010	12½*2 1/4" BR/VEN, HIGH-LOW	1	PCS	5707292397508
65	1310630	DISTANCE PIECE, Ø10,3*22*10MM	1	PCS	5707292140753
66	1310628	DISTANCE PCS,6,4*10*2,8MM	2	PCS	5707292140746
67	82888-60	CARRY ARM, HIGH-LOW,BLACK	1	PCS	5707292459695
68	82838	LINKARM	2	PCS	5707292125392
69	3470335	RELEASE BUTTON 4*8MM	1	PCS	5707292146632
70	82856-60	ROD FOR HANDBRACE, RIGHT	1	PCS	5707292459862
71	0641625	BUTTON HEAD SCREW 6*25 MM	2	PCS	5707292139283
72	82855-60	ROD FOR HANDBRACE, LEFT	1	PCS	5707292459831
73	3652501	R82 HANDLE M6*16MM SCREW	2	PCS	5707292413963
74	71137	BUSH BALL FOR HANDBRACE	2	PCS	5707292361813
75	82858-60	HANDLE	1	PCS	5707292459879
76	6153500	KNOB SPRING 0,5*6,5 MM.	2	PCS	5707292188571
77	2500560	GRIP F/Ø22 HANDBRACE 800MM	1	PCS	5707292388537
78	1108050	WASHER M10, DIN9021	2	PCS	5707292140401
79	82481	SAFETY MOUNTING FOR GASSPRING	1	PCS	5707292124500
80	1357500	DISTANCE PCS 20*8,4*4MM	2	PCS	5707292141026
81	2704300	BLACK HUB CAP FOR ROLKO WHEEL	2	PCS	5707292144515
82	82880	HANDLE FOR ADAPTOR	1	PCS	5707292361318
83	0683810	PASBOLT M/INDV.6KT. 8*12 (M6)	1	PCS	5707292361929
85	1310712	NYLON WASHER, NATURE	1	PCS	5707292356345
86	0603700	INNSEX SCREW 8*70	2	PCS	5707292138293
88	1310640	WASHER, NATURE Ø16*10*0,5MM	4	PCS	5707292140760
90	82899	HAND BRACE HOLDER, LEFT	1	PCS	5707292401397
94	0603540	INSEX LOW HEAD M8x40 STAINLESS	2	PCS	5707292412485
95	75600-60	T-FRAME, X:PANDA 1+2	1	PCS	5707292459541
130	1101000	CENTER SPRING WASHER 8MM	1	PCS	5707292140173



R82	Created by	Revision	3	Revision by	Jes
High-Low.x (Outdoor)	Project	79177	Item no.	22-02-2018	22-02-2018

Position	No.	Description	Quantity	Unit of Measure	Ean code
1	75640-60	HIGH-LOW 2 OUTDOOR FRAME	1	PCS	5707292460011
2	82903-60	CARRY ARM, WELDED, HIGH-LOW 2	1	PCS	5707292459404
3	75630-60	T-FRAME, BLACK	1	PCS	5707292457547
4	6118822	HORIZONTAL RELEASE	1	PCS	5707292186744
5	2205400	BLOC-O-LIFT 9235YS 1400 N	1	PCS	5707292460172
6	2201500	BLOC-O-LIFT 9127MP 500 N	1	PCS	5707292143181
7	1761000	COUNTER NUT 10*1,0 FINE THREAD	1	PCS	5707292141538
8	6113000	SPINDLE, T-PART/FRAME	1	PCS	5707292186362
9	3502008	KNOB HANDLE Ø20 M6	1	PCS	5707292146830
10	0310100	PRESSURESPRING 0,9*8*23*10,5V	1	PCS	5707292135513
11	82894	SADDLE WASHER	2	PCS	5707292387578
12	82829-50	BALL Ø40, BLUE	2	PCS	5707292231871
13	1310705	NYLON WASHER, WHITE, Ø25*8,4*2,5	16	PCS	5707292140791
14	1108000	WASHER 8MM	16	PCS	5707292140388
15	82808	ASSEMBLY BUSH	1	PCS	5707292125224
16	0603500	INSEX SCREW 8*45	8	PCS	5707292138231
17	1607000	LOCK NUT 8MM, LARGE PACK	13	PCS	5707292141378
19	1350000	DISTANCEPART BLACK 6*15*8,2 MM	2	PCS	5707292140876
20	0603540	INSEX LOW HEAD M8x40 STAINLESS	4	PCS	5707292412485
22	1350100	DISTANCE PART BLACK 8,2*18*10	4	PCS	5707292140937
23	1103200	FAZET WASHER 8MM	6	PCS	5707292140296
24	0683803	PASBOLT M/INDV.6KT.10*25 (M8)	2	PCS	5707292460066
26	0602200	INSEX SCREW 6*16	2	PCS	5707292138095
27	76800-60	KIP BRACE, BLACK	1	PCS	5707292497116
28	0615010	INSEX M8*30 FZB, SHORTENED	1	PCS	5707292367990
29	1600525	STAINL. WELDING NUT W/FLANGE	2	PCS	5707292141149
30	0380184	SPEC. LOCKING HOUSE M10*1,28MM	1	PCS	5707292366030
31	6118820	HOUSE FOR GASSPRING, BLACK	1	PCS	5707292186720
34	0108000	O-RINGS Ø13*2,5 QUALITY XP 70	1	PCS	5707292135124
35	0603600	INSEX SCREW 8*55	1	PCS	5707292138262
36	0603550	INSEX SCREW 8*50	2	PCS	5707292138255
37	1102000	PLANING WASHER 8MM	8	PCS	5707292140227
38	0645645	BUTTON HEAD M6*45 ZN/BLACK	4	PCS	5707292139351
39	1310528	COVERING STUD, BLACK 13MM	1	PCS	5707292470348
41	2200013	ARM F. RELEASE, F.INDOOR FRAME	1	PCS	5707292142993
42	2200030	BUTTON FOR RELEASE ARM	1	PCS	5707292143051
43	82866	LOCK FOR RELEASE HEAD	1	PCS	5707292125606
44	3003510	12½*2 1/4" BR/HØJ, HIGH-LOW	1	PCS	5707292397492
45	1902380	STEEL SET SCREW 12*80MM	2	PCS	5707292142030
46	3007910	180*45 BLACK/PNEUM. WHEEL	2	PCS	5707292146045
47	82840	BRAKE BRACE	1	PCS	5707292125415
48	82830	BRAKE PEDAL, INDOOR FRAME	1	PCS	5707292125347
49	1101600	CENTER SPRING WASHER 12MM	4	PCS	5707292140197
50	1604500	STEEL NUT 12MM, LARGE PACK	2	PCS	5707292141309
51	1902320	STEEL SET SCREW 8*70MM	2	PCS	5707292142023
52	1606500	LOCK NUT 6 MM	1	PCS	5707292141361
53	1106000	WASHER 6MM	2	PCS	5707292140371
54	1125618	SCREENWASHER FZ6*18*3MM	8	PCS	5707292140494
55	2965155	FRONTFORK 200MM, BLACK	2	PCS	5707292144935

56	0641620	BUTTON HEAD SCREW 6*20	2	PCS	5707292139276
57	1102500	PLANNING WASHER 10 MM	1	PCS	5707292140234
58	3470400	HAND GRIP WITHOUT COVER	2	PCS	5707292146663
59	1109500	STARLOCK WASHER WITH CAPE 6	2	PCS	5707292140449
60	82828	HAND BRACE HOLDER, HIGH-LOW	1	PCS	5707292125330
61	0606000	INSEX SCREW 10*50	2	PCS	5707292138408
62	1103400	FAZET WASHER 10 MM	2	PCS	5707292140319
63	2502002	FERRULE D18*0,8-2,5 BLACK	2	PCS	5707292433947
64	3004010	12½*2 1/4" BR/VEN, HIGH-LOW	1	PCS	5707292397508
65	1310630	DISTANCE PIECE, Ø10,3*22*10MM	1	PCS	5707292140753
66	1310628	DISTANCE PCS,6,4*10*2,8MM	2	PCS	5707292140746
67	82888-60	CARRY ARM, HIGH-LOW,BLACK	1	PCS	5707292459695
68	82838	LINKARM	2	PCS	5707292125392
70	82856-60	ROD FOR HANDBRACE, RIGHT	1	PCS	5707292459862
71	0641625	BUTTON HEAD SCREW 6*25 MM	2	PCS	5707292139283
72	82855-60	ROD FOR HANDBRACE, LEFT	1	PCS	5707292459831
73	3652501	R82 HANDLE M6*16MM SCREW	2	PCS	5707292413963
74	71137	BUSH BALL FOR HANDBRACE	2	PCS	5707292361813
75	82858-60	HANDLE	1	PCS	5707292459879
76	6153500	KNOB SPRING 0,5*6,5 MM.	2	PCS	5707292188571
77	2500560	GRIP F/ø22 HANDBRACE 800MM	1	PCS	5707292388537
78	1108050	WASHER M10, DIN9021	2	PCS	5707292140401
79	82481	SAFETY MOUNTING FOR GASSPRING	1	PCS	5707292124500
80	1357500	DISTANCE PCS 20*8,4*4MM	2	PCS	5707292141026
81	2704300	BLACK HUB CAP FOR ROLKO WHEEL	2	PCS	5707292144515
82	82880	HANDLE FOR ADAPTOR	1	PCS	5707292361318
83	0683810	PASBOLT M/INDV.6KT. 8*12 (M6)	1	PCS	5707292361929
85	1310640	WASHER, NATURE Ø16*10*0,5MM	2	PCS	5707292140760
86	0603700	INNSEX SCREW 8*70	2	PCS	5707292138293
88	1310640	WASHER, NATURE Ø16*10*0,5MM	2	PCS	5707292140760
90	82899	HAND BRACE HOLDER, LEFT	1	PCS	5707292401397
93	75625	LEFT PEDAL F. HIGH/LOW FRAME	1	PCS	5707292459046
94	1940005	ECO SYN 3,5*14	1	PCS	5707292142566
95	75635	LEFT HOLDER F. RELEASE ARM	1	PCS	5707292459060
96	75636	RIGHT HOLDER F. RELEASE ARM	1	PCS	5707292459077
97	75637	HOLDER UNDERPART,F. UDLØSERARM	2	PCS	5707292459978
98	0640911	BUTTON HEAD M5*10 FZB TUFLOK	4	PCS	5707292428479
99	75626	RIGHT PEDAL HIGH/LOW FRAME	1	PCS	5707292459053
100	0662000	BUTTON HEAD SCREW 8*20 STAINL.	2	PCS	5707292139573
101	75645	RELEASE ARM F. HIGHT/LOW	1	PCS	5707292459084
102	0310225	TENSION SPRING	2	PCS	5707292472397
130	1101000	CENTER SPRING WASHER 8MM	1	PCS	5707292140173
140	0604000	INSEX SCREW 10*20	1	PCS	5707292138361
141	82488	STEER FOR ANTI TIP DEVICE	1	PCS	5707292357847
142	0380182	LOCKING HOUSE, COMPLETE M10*1	1	PCS	5707292357953
143	1607500	LOCK NUT 10 MM	1	PCS	5707292141385
144	82375	PVC-BUSHING FOR PELOT	2	PCS	5707292123763
145	82484	BRACE FOR ANTI TIP DEVICE	1	PCS	5707292357892
147	76853	Transport fitting	2	PCS	5707292526656
148	76858	Transport fitting left	1	PCS	5707292526694

149	0609721	Insex 4*20 FZB	2	PCS	5707292439222
150	76859	Transport fitting right	1	PCS	5707292526700
151	0663050	Button head M8*50, stainless	2	PCS	5707292400697
152	1105080	Stainless washer 8mm	2	PCS	5707292140364
153	1631080	Stainless lock nut 8mm	4	PCS	5707292141453
154	0662000	Button head screw 8*20 stainl.	2	PCS	5707292139573



Position	No.	Description	Quantity	Unit of Measure	Ean code
132	3502516	TIGHTENING HANDLE 45MM M8*16	1	PCS	5707292146915
133	82950	HOLLOW PLATE 16*32, WOMBAT	2	PCS	5707292126030
134	1940017	SHEET METAL SCREW UHX4,2*13FZB	4	PCS	5707292142597
138*	82944	FOOTPLATE SIZE 1, WOMBAT	1	PCS	5707292125996
	82940	FODPLADE STR.2, WOMBAT	1	PCS	5707292125958
140*	3502780	HANDLE 28MM,M10*160MM THREAD	1	PCS	5707292363145
	3502790	HAND GRIP 28MM, M10*196MM	1	PCS	5707292363152
177	2504500	FERRULE E20*1,0-2,0 INT.BLACK	5	PCS	5707292144126
179*	75260	Rod size 0 for footrest	1	PCS	5707292458346
	75262	Rod size 2 for footrest	1	PCS	5707292458353
	75263	Rod size 3 for footrest	1	PCS	5707292458360
180*	75270	HOLDER SIZE 1 FOR FOOTREST	1	PCS	5707292455598
	75272	HOLDER SIZE 2 FOR FOOTREST	1	PCS	5707292458384
181	3504025	TIGHTENING HANDLE 45MM M8*25	1	PCS	5707292147103
182*	75266	HOLDER SIZE 1 FOR FOOTREST	1	PCS	5707292455611
	75267	HOLDER SIZE 2 FOR FOOTREST	1	PCS	5707292455604
183	1101000	CENTER SPRING WASHER 8MM	1	PCS	5707292140173
184	1603500	STEEL NUT 8MM, LARGE PACK	1	PCS	5707292141286
207	1607500	Lock nut 10 mm	1	PCS	5707292141385
250*	75285	Rod dobblet size 0	1	PCS	5707292458445
	75287	HOLDER SIZE 2,DOUBBLE FOOTREST	1	PCS	5707292458469
	75288	HOLDER SIZE 3,DOUBBLE FOOTREST	1	PCS	5707292458476
253	2504000	FERRULE E15*1,0-2,0 INT.BLACK	2	PCS	5707292144102
404	0701000	STOP SCREW WITH CRATER 8*10	4	PCS	5707292139870
411	73734	MOUNTING FOR FOOTREST,RIGHT	1	PCS	5707292433466
412	73735	MOUNTING FOR FOOTREST,LEFT	1	PCS	5707292433473
525	1607000	LOCK NUT 8MM, LARGE PACK	2	PCS	5707292141378
526	0612500	INSEX SCREW COUNTERS. 6*25	4	PCS	5707292138712
527*	82156-60	FOOTPLATE SIZE 1,BLACK,GAZELLE	2	PCS	5707292230492
	82154-60	FOOTPLATE SIZE 2,BLACK,GAZELLE	2	PCS	5707292230478
	82158-60	FOOTPLATE SIZE 3 BLACK,GAZELLE	2	PCS	5707292230508
528	1606500	LOCK NUT 6 MM	4	PCS	5707292141361
529*	73648	STICK SIZE 1, FOOTREST	2	PCS	5707292445797
	73649	STICK SIZE 2, FOOTREST	2	PCS	5707292445803
530	72724	BALL JOINING RIGHT	2	PCS	5707292421845
531	72723	BALL JOINING LEFT	2	PCS	5707292421814
532	0701010	SET SCREW M10*10 W/FLAT END	2	PCS	5707292434098
533	0602300	INSEX SCREW 6*20	2	PCS	5707292138101
534	0602440	INSEX M6*40 FZB	2	PCS	5707292138149
535	72713	BRACKED	2	PCS	5707292420763
536	0603000	INSEX SCREW 8*35	2	PCS	5707292138217
537	1101000	CENTER SPRING WASHER 8MM	6	PCS	5707292140173
538	1102010	FACE PLATE 8,4*18*2MM, FZB	2	PCS	5707292429766
540	0602700	INSEX SCREW 8*25	2	PCS	5707292138187
541	74062	TOOTHED DISK 30*14	6	PCS	5707292377951
542	0602850	INSEX M8*22, FZB	2	PCS	5707292435408
544	72712	KNEE JOINT	2	PCS	5707292420756
545	72721	BALLHEAD	2	PCS	5707292428875
600	74053	Foot plate 1, left	1	PCS	5707292373755

601	74052	Foot plate 1, right	1	PCS	5707292373748
602	74045	Mounting for foot plate, left	1	PCS	5707292373694
603	74044	Mounting for foot plate, right	1	PCS	5707292373694
604*	75317	Rod for footrest size 0, 21 cm	2	PCS	5707292477774
	75319	Rod for footrest size 2, 34 cm	2	PCS	5707292477804
	75325	Rod for footrest size 3, 38 cm	2	PCS	5707292477811
605*	75327	Holder for footrest size 1	1	PCS	5707292477545
	75312	Holder for footrest size 2	1	PCS	5707292477538
606	73735	Mounting for footrest, left	1	PCS	5707292433473
607	73734	Mounting for footrest, right	1	PCS	5707292477644
608	75323	Extension piece	2	PCS	5707292477644
610	0663000	Button head screw 8*30 stainl.	2	PCS	5707292139597
611	1100500	Spring washer 8mm, stainless	2	PCS	5707292140142
612	1102000	Planing washer 8mm	4	PCS	5707292140227
613	0661200	Button head screw 8*12 stainl.	2	PCS	5707292139542
614	1607000	Lock nut 8mm, large pack	4	PCS	5707292141378
615	2504000	Ferrule e15*1,0-2,0 int.black	4	PCS	5707292144102
616	1100495	Spring washer M8	2	PCS	5707292458674
620	74061	Tooth washer Ø30	2	PCS	5707292373816
621	75315	Rotary joint	2	PCS	5707292477927
622	0602485	Insex M8*25, low head, stainless	4	PCS	5707292432216
623	75329	Tooth disk Ø30x10	2	PCS	5707292482389
624	0603540	Insex low head M8x16 stainless	2	PCS	5707292412485
626	0603700	Insex screw 8*70	2	PCS	5707292138293