

# stingray<sup>TM</sup>

## Exploded views / Part lists

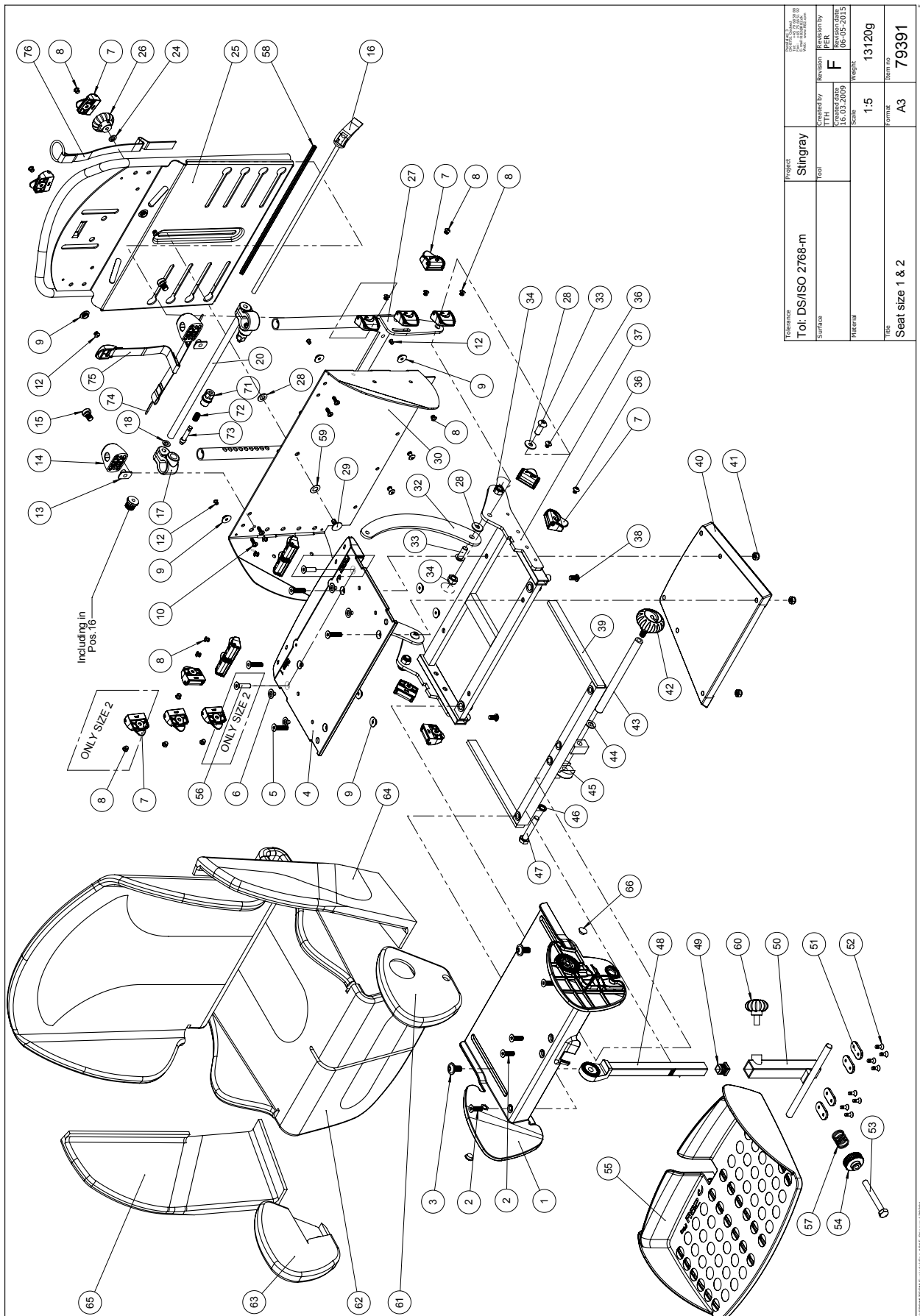
Rev. date (11.2017)

*On the following pages you will find the parts used to assemble this product. Please note that some spare parts cannot be purchased individually but are part of a complete kit. Please also note that for some spare parts extra delivery time may occur.*



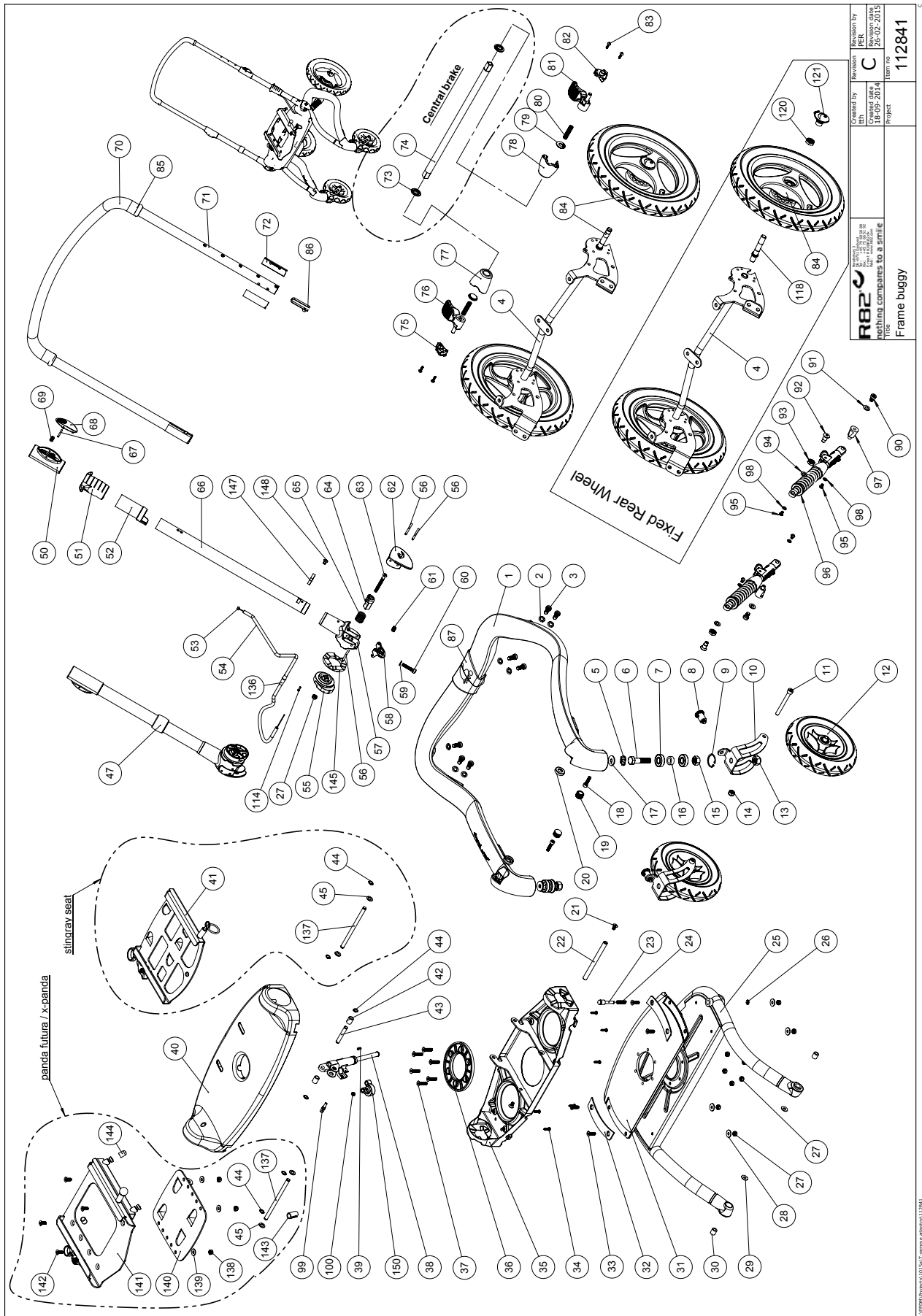
## Contents

Seat.....	3
Frame with small front wheels .....	6-15
Frame with large front wheels.....	16-22
Accessories	
Transport fittings .....	23
Folding top.....	25
Hip supports .....	27
Hip supports, multi-adjustable.....	29
Side supports.....	31
Vent tray.....	33
Pommel .....	35
Tray .....	37
Tray, grey.....	39
Hand brace .....	41

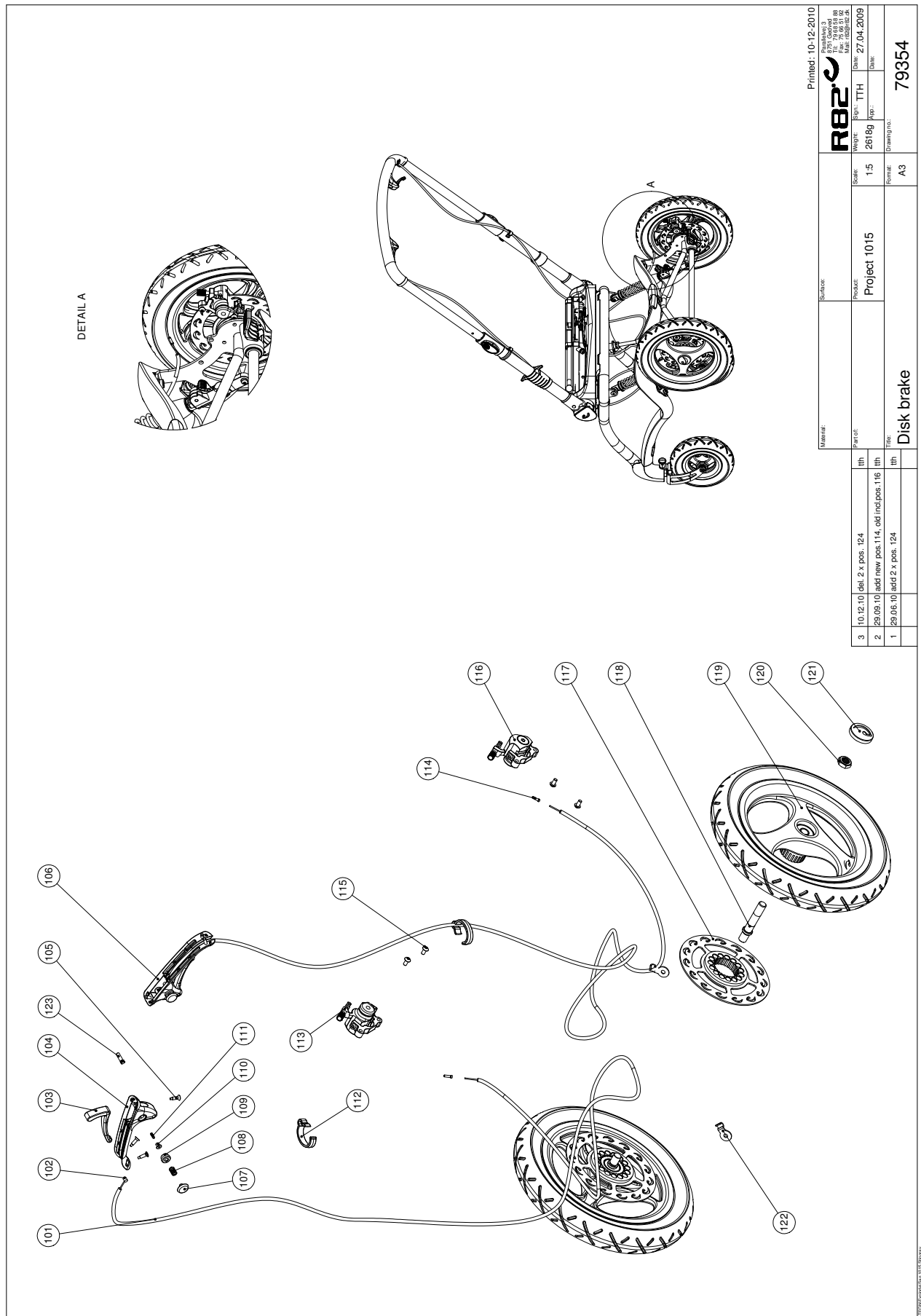


Position	No.	Description	Quantity	Unit of Measure	Ean code
1	76094	Moveable plate, Seat 2	PCS	1	5707292489234
1	76092	Moveable plate Seat 1	PCS	1	5707292481689
2	0609730	Stainless insex 6*20 uh.	PCS	4	5707292138507
3	0661800	Button head w/flange 8*20	PCS	2	5707292408075
4	76093	Fixed Seat 2	PCS	1	5707292489227
4	76091	Fixed Seat 1	PCS	1	5707292488848
5	0609735	Stainless insex screw M6 x35mm	PCS	4	5707292138521
6	0450053	Rivet for press stud	PCS	4	5707292514493
7	75306	Snap lock R82 25	PCS	18	5707292437624
8	0506507	Blindnitte 4,8*10 Alu/nirosta	PCS	18	5707292516725
9	0450052	Ball f. Pushbutton	PCS	10	5707292452313
10	0506513	Stainless blind rivet Ø4, 8*12	PCS	4	5707292137326
12	0504601	Popnitte tap 3,2*8,0	PCS	6	5707292552334
13	1600524	Stainl. Welding nut w/flange	PCS	2	5707292503541
14	76107	Tube for fix plate, back	PCS	2	5707292488626
15	0609744	Stainless insex 6*14 ch.	PCS	2	5707292418234
16	3515101	Handle size 2 angel adjustment	PCS	1	5707292516114
16	3515100	Handle size 1 angel adjustment	PCS	1	5707292516107
17	76122	Slide bearing, back	PCS	2	5707292488459
18	1130600	Stainless washer 6mm	PCS	2	5707292140517
20	76126	Tube f. Angel adjustment size2	PCS	1	5707292489241
20	76124	Tube f. Angel adjustment size1	PCS	1	5707292488466
24	1100490	Spring washer M6 stainless	PCS	1	5707292411297
25	76113	Moveable back 2	PCS	1	5707292488725
25	76110	Moveable back 1	PCS	1	5707292488695
26	3470351	R82 handle M6*10mm nut	PCS	1	5707292413895
27	76108	Brace for fix back 2	PCS	1	5707292488619
27	76101	Brace for fix back 1	PCS	1	5707292488497
28	1310711	Nylon washer 15x8,4x1,5mm	PCS	5	5707292429933
29	1905016	Board bolt 6*16mm, stainless	PCS	1	5707292503732
30	76119	Plate for fix back 2	PCS	1	5707292488633
30	76106	Plate for fix back 1	PCS	1	5707292488657
32	76121	Carrier for back size 2	PCS	2	5707292488442
32	76120	Carrier for back size 1	PCS	2	5707292503602
33	0662000	Button head screw 8*20 stainl.	PCS	4	5707292139573
34	1631080	Stainless lock nut 8mm	PCS	4	5707292141453
36	0631952	Button head M5*6, rf tuflok	PCS	4	5707292503725
37	76087	Seat frame 2	PCS	1	5707292489036
37	76081	Seat frame 1	PCS	1	5707292488794
38	0602195	Insex M6*12 stainless	PCS	2	5707292404701
39	115174	Seat extention frame, size 2	PCS	1	5707292605849
39	115157	Seat extention frame, size 1	PCS	1	5707292605863
40	110181	Adaper plate for Stingray	PCS	1	5707292598158
41	1631060	Stainless lock nut 6mm	PCS	4	5707292141446
42	3502545	R82 handle dia.45 M8*15mm	PCS	1	5707292450456
43	76129	Tube f. Angle adjustment size2	PCS	1	5707292503848
43	76134	Tube f. angel adjustment size1	PCS	1	5707292503626
44	1105080	Stainless washer 8mm	PCS	1	5707292140364
45	75329	Tooth disk Ø30x10	PCS	1	5707292482389

46	1100495	Spring washer M8	PCS	1	5707292458674
47	1073658	Steelbolt M8*45 rustfri	PCS	1	5707292503718
48	114291	Rod size 1 for footrest	PCS	1	5707292605764
48	114292	Rod size 0 for footrest	PCS	1	5707292605788
49	2504000	Ferrule e15*1,0-2,0 int.black	PCS	1	5707292144102
50	101035	Carrier bracket	PCS	1	5707292554888
51	82950	Hollow plate 16*32, Wombat	PCS	4	5707292126030
52	1940017	Sheet metal screw uhx4,2*13fzb	PCS	8	5707292142597
53	1073659	Steelbolt M8*65 rustfri	PCS	1	5707292514318
54	3470472	Handle M8*35	PCS	1	5707292513892
55	76270	Foot rest	PCS	1	5707292503695
56	0609728	Insex, stainless 6*16 uh	PCS	2	5707292138491
57	0310113	Stainless spring1,2*16indv.*20	PCS	1	5707292453143
58	4012000	Protection band	MTR	0,32	5707292516909
59	1310645	Washer, nature Ø16*8*0,5mm	PCS	1	5707292446015
60	3503001	R82 handle M8x15mm screw	PCS	1	5707292413925
66	1310528	Covering stud, black 13mm	PCS	2	5707292470348
71	100367	Spring case	PCS	2	5707292550163
72	100366	Locking pin	PCS	2	5707292550156
73	0310100	Pressure spring 0,9*8*23*10,5v	PCS	2	5707292135513
74	0216000	Ring f.connectinglink 20*1,5mm	PCS	2	5707292135230
75	102255	Strap, bottom for back release	PCS	1	5707292630384
75	102250	Strap, bottom for back release	PCS	1	5707292572660
76	102229	Strap for back release	PCS	1	5707292567925



R82		Created by 18-09-2014	Revision C	Revision by PER	Revision date 26-02-2015
Title Frame buggy					



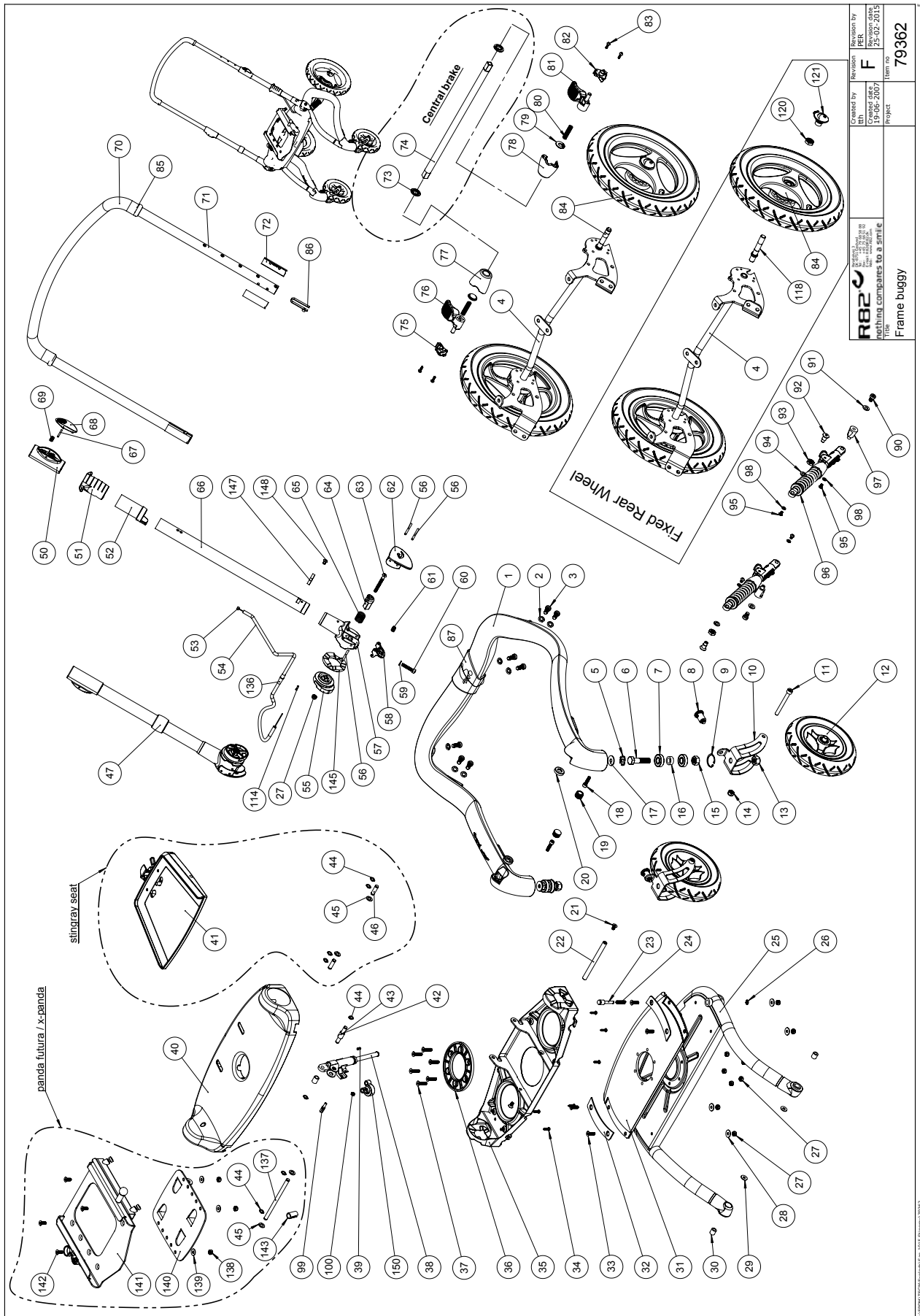


Position	No.	Description	Quantity	Unit of Measure	Ean code
1+87	112397	Carbon frame with Stepcover	PCS	1	5707292591012
2	1100500	Spring washer 8mm, stainless	PCS	8	5707292140142
3	0609816	Stainless insex screw 8*16	PCS	8	5707292138569
4	76027	Rear wheel suspension, black	PCS	1	5707292476623
5	6108151	Spring screw 23,55*8,74	PCS	2	5707292523617
6	0607999	Stainless Insex screw 12*50	PCS	2	5707292482013
7	2985220	Ball bearing for bearing house	PCS	4	5707292145420
8	0380184	Spec. Locking house M10*1,28mm	PCS	2	5707292366030
9	1100221	Locking ring for 30mm drilling	PCS	2	5707292502001
10	76051-1	Front fork new buggy	PCS	2	5707292546876
11	0602494	Insex M8*75, stainless	PCS	2	5707292502056
12	3004040	Ø190 wheel with air	PCS	2	5707292475060
12	3004050	Ø190 wheel massive	PCS	2	5707292475077
13	1631120	Stainless lock nut 12mm	PCS	2	5707292502049
14	1631080	Stainless lock nut 8mm	PCS	2	5707292141453
15	1606002	Nut M12*1-1,25 stainless steel	PCS	2	5707292502100
16	76052	Bush for front wheel bearing	PCS	2	5707292481542
17	1108000	Washer 8mm	PCS	2	5707292140388
18	0602426	Insex M6*25 rustfri, eslok	PCS	2	5707292539854
19	2501550	Blind cap 18	PCS	2	5707292502254
20	76008	Bush for knee, pom	PCS	2	5707292481085
21	0621200	Insex screw 6*12mm	PCS	2	5707292138958
22	76042	Axle for springstopper	PCS	1	5707292491497
23	111480	Stop pin	PCS	1	5707292590206
24	0308714	Stainless spring 1,3*7*23 5½V	PCS	1	5707292521040
26	1145050	Lock washer 5mm axle	PCS	1	5707292140579
27	1631060	Stainless lock nut 6mm	PCS	2	5707292141446
29	1101950	Washer Ø6,1-16*1 mm, FZB	PCS	2	5707292140210
30	76018	Bush for knee joint	PCS	2	5707292481245
34	1940039	Eco-syn z 4*16 stainless	PCS	8	5707292502070
38	2207040	Springstopper l=102/22	PCS	1	5707292473127
39	0388006	Screwnipple 5*7,5mm	PCS	1	5707292136114
40	76034	Cover for bridge	PCS	1	5707292476838
41	110176	T-frame for Stingray	PCS	1	5707292598141
42	1350024	Distance piece 14*15*8,2mm	PCS	2	5707292140920
43	76043	Axle for springstopper	PCS	1	5707292481450
44	1145060	Locking washer, axle stainless	PCS	4	5707292375056
45	1310711	Nylon washer 15x8,4x1,5mm	PCS	2	5707292429933
50	76220	Height adjustment	PCS	2	5707292491718
51	76231	Handle for tilt in space	PCS	1	5707292491855
53	0371854-1	Soft inner cable for Stingray	PCS	1	5707292536945
54	5002995	Cable for tilt of seat	PCS	1	5707292542724
55	76064	Eccentric for lock	PCS	2	5707292481627
56	0530009	Cyl.pin Ø4*50 mm stainless	PCS	4	5707292502445
58	76066	Safety lock for handbrake	PCS	2	5707292491558
61	0310122	Compression spring 0,9*8u	PCS	2	5707292135544
62	76062	Handle of a lock R82	PCS	2	5707292481603
63	0641637	Button head M6*60 stainless	PCS	2	5707292540317
64	76063	Handle of a lock	PCS	2	5707292481610

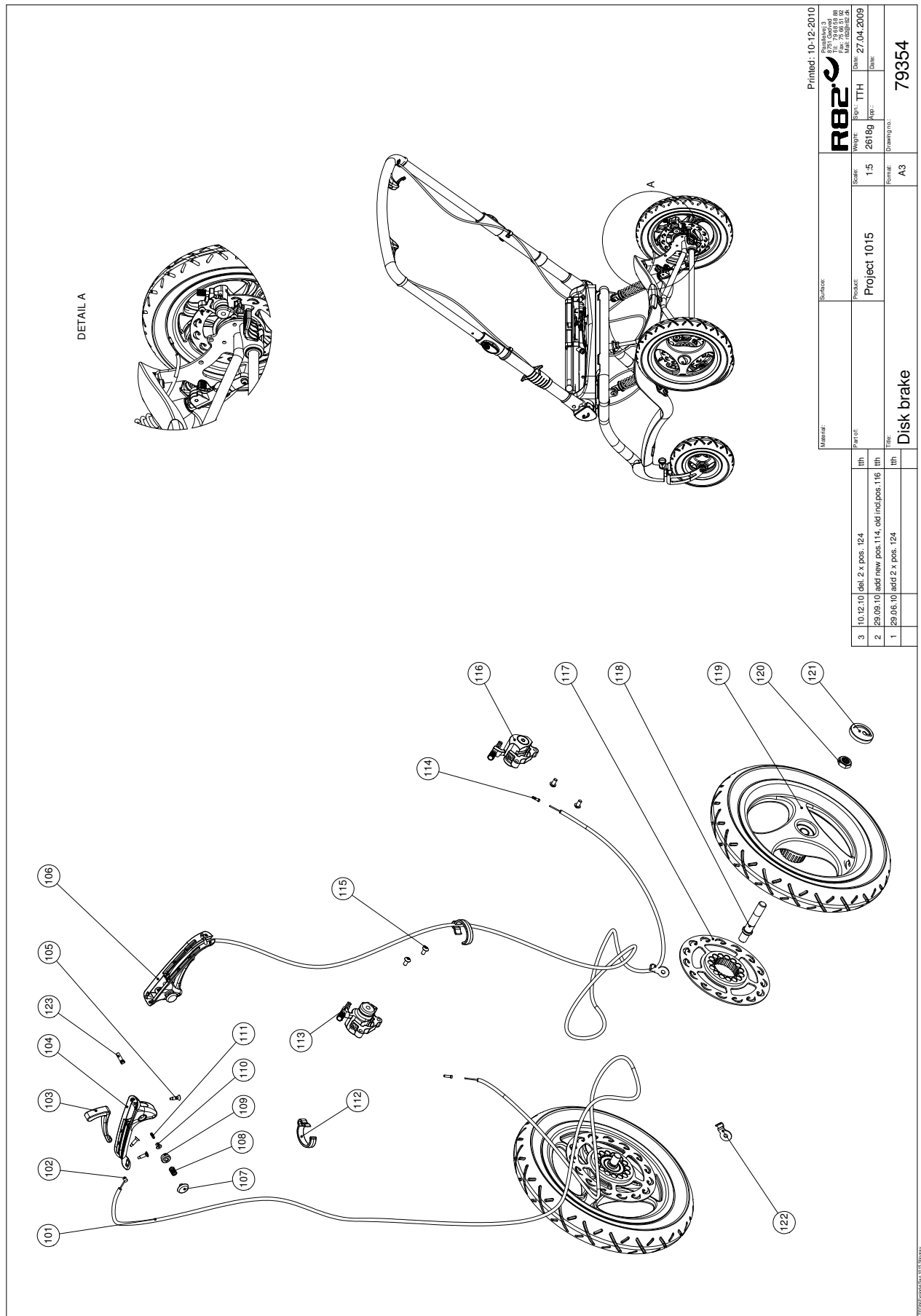


65	0308711	Stainless spring 2,0*16*20mm	PCS	2	5707292502018
67	0530011	Pin Ø3x32 mm.	PCS	2	5707292516220
68	76221	Push button for push brace	PCS	2	5707292491725
69	0310125	Pressure spring 0,9*8u/Ø12+0,5	PCS	2	5707292135575
72	76229	Bearing lining	PCS	4	5707292491824
73	76145	Bush for connecting shaft	PCS	2	5707292491688
74	76149	Connecting shaft, for brake	PCS	1	5707292491794
75	76141	Bottom right, brake	PCS	1	5707292491589
76	114300	Pedal right for brake	PCS	1	5707292605030
77	76143	House right, for brake	PCS	1	5707292491633
78	76148	House left, for brake	PCS	1	5707292491787
79	76144	Cover for spring, brake	PCS	2	5707292491657
80	0308713	Stainless spring 1,0*6*40mm*17	PCS	2	5707292502032
81	114304	Pedal left for brake	PCS	1	5707292605047
82	76146	Bottom left, for brake	PCS	1	5707292491749
83	1940039	Eco-syn z 4*16 stainless	PCS	4	5707292502070
84	3004020	Ø290 wheel air w. quick releas	PCS	2	5707292475046
84	3004030	Ø290 wheel pu. w.quick release	PCS	2	5707292475053
84	3004026	Ø290 wheel air, fixed axle	PCS	2	5707292525628
84	3004034	Ø290 solid racing, fixed axle	PCS	2	5707292525635
86	6153550	Knob spring Ø 7.5x5.5 mm	PCS	2	5707292513717
90	0609816	Stainless insex screw 8*16	PCS	2	5707292138569
91	1105080	Stainless washer 8mm	PCS	2	5707292140364
94	1105080	Stainless washer 8mm	PCS	2	5707292140364
95	0602008	Stainless insex M5*10	PCS	4	5707292542762
96	113790	damper with red hammer	PCS	2	5707292601407
97	76069	Distance bush	PCS	2	5707292481641
98	1130500	Stainless washer M5, din9021	PCS	4	5707292516343
99	0381000	cable adjuster with nut only	PCS	1	5707292544018
100	1602800	Steelnut 5mm, FZB	PCS	1	5707292141262
101	5102999	Index Casing for stingray	PCS	2	5707292542755
105	1811105	Screw 4.2x16uh, stainless	PCS	6	5707292141699
112	76156	Cable retainer	PCS	2	5707292510280
113	3503538	Disk brake right dM60	PCS	1	5707292518460
114	0387000	End nipple for outer casing	PCS	3	5707292136091
115	0602195	Insex M6*12 stainless	PCS	4	5707292404701
116	3503539	Disk brake dM60 left	PCS	1	5707292518484
118	76151	Axle for disk brake	PCS	2	5707292535351
120	1607005	Locknut 12 mm, A2	PCS	2	5707292535368
121	3004065	Cover for 12½" wheel	PCS	2	5707292520203
122	76238	Bracket	PCS	2	5707292518682
136	0235073	Cable entry with talkum	PCS	1	5707292581617
137	76314	Axle for T-frame	PCS	1	5707292538604
145	76038	Support disc Stingray	PCS	2	5707292540324
150	102060	Cabel Holder	PCS	1	5707292561336
180	0602007	Stainless insex M5*10	PCS	2	5707292542779
117+119	3004037	ø290 Air racing, with disk	PCS	2	5707292544803
117+119	3004027	ø290 PUR Racing, with disk	PCS	2	5707292544797
117-119	3004027	ø290 PUR Racing, with disk	PCS	2	5707292544797
Module	5087036	Upperpart Push brace	PCS	1	5707292536273

Module	5087037-1	Lower part left, Push brace	PCS	1	5707292544032
Module	5087038-1	Lower part right, Push brace	PCS	1	5707292544049
Module	5087024	Bearing insert for turn. wheel	PCS	2	5707292509727
Module	5087030-1	Upper frame mounted, black	PCS	1	5707292587046
Module	5087040	Handle of a lock R82 mounted	PCS	2	5707292510471
Module	5076236	Holder for brake, right mounted	PCS	1	5707292525420
Module	5076235	Holder for brake, left mounted	PCS	1	5707292525413



R82	nothing compares to a smile	Project	Item no	79362
Created by	Revision	Created date	Revision date	
19-06-2007	F	25-02-2015		



Position	No.	Description	Quantity	Unit of Measure	Ean code
1+87	112397	Carbon frame with Stepcover	STK	1	5707292591012
2	1100500	Spring washer 8mm, stainless	STK	8	5707292140142
3	0609816	Stainless insex screw 8*16	STK	8	5707292138569
4	76027	Rear wheel suspension, black	STK	1	5707292476623
5	6108151	Spring screw 23,55*8,74	STK	2	5707292523617
6	0607999	Stainless Insex screw 12*50	STK	2	5707292482013
7	2985220	Ball bearing for bearing house	STK	4	5707292145420
8	0380184	Spec. Locking house M10*1,28mm	STK	2	5707292366030
9	1100221	Locking ring for 30mm drilling	STK	2	5707292502001
10	76051-1	Front fork new buggy	STK	2	5707292546876
11	0602494	Insex M8*75, stainless	STK	2	5707292502056
12	3004040	Ø190 wheel with air	STK	2	5707292475060
12	3004050	Ø190 wheel massive	STK	2	5707292475077
13	1631120	Stainless lock nut 12mm	STK	2	5707292502049
14	1631080	Stainless lock nut 8mm	STK	2	5707292141453
15	1606002	Nut M12*1-1,25 stainless steel	STK	2	5707292502100
16	76052	Bush for front wheel bearing	STK	2	5707292481542
17	1108000	Washer 8mm	STK	2	5707292140388
18	0602426	Insex M6*25 rustfri, eslok	STK	2	5707292539854
19	2501550	Blind cap 18	STK	2	5707292502254
20	76008	Bush for knee, pom	STK	2	5707292481085
21	0621200	Insex screw 6*12mm	STK	2	5707292138958
22	76042	Axle for springstopper	STK	1	5707292491497
23	111480	Stop pin	STK	1	5707292590206
24	0308714	Stainless spring 1,3*7*23 5½V	STK	1	5707292521040
26	1145050	Lock washer 5mm axle	STK	1	5707292140579
27	1631060	Stainless lock nut 6mm	STK	2	5707292141446
29	1101950	Washer Ø6,1-16*1 mm, FZB	STK	2	5707292140210
30	76018	Bush for knee joint	STK	2	5707292481245
34	1940039	Eco-syn z 4*16 stainless	STK	8	5707292502070
38	2207040	Springstopper l=102/22	STK	1	5707292473127
39	0388006	Screwnipple 5*7,5mm	STK	1	5707292136114
40	76034	Cover for bridge	STK	1	5707292476838
42	1350024	Distance piece 14*15*8,2mm	STK	2	5707292140920
43	76043	Axle for springstopper	STK	1	5707292481450
44	1145060	Locking washer, axle stainless	STK	4	5707292375056
45	1310711	Nylon washer 15x8,4x1,5mm	STK	2	5707292429933
50	76220	Height adjustment	STK	2	5707292491718
51	76231	Handle for tilt in space	STK	1	5707292491855
53	0371854-1	Soft inner cable for Stingray	STK	1	5707292536945
54	5002995	Cable for tilt of seat	STK	1	5707292542724
55	76064	Eccentric for lock	STK	2	5707292481627
56	0530009	Cyl.pin Ø4*50 mm stainless	STK	4	5707292502445
58	76066	Safety lock for handbrake	STK	2	5707292491558
61	0310122	Compression spring 0,9*8u	STK	2	5707292135544
62	76062	Handle of a lock R82	STK	2	5707292481603
63	0641637	Button head M6*60 stainless	STK	2	5707292540317
64	76063	Handle of a lock	STK	2	5707292481610
65	0308711	Stainless spring 2,0*16*20mm	STK	2	5707292502018

67	0530011	Pin Ø3x32 mm.	STK	2	5707292516220
68	76221	Push button for push brace	STK	2	5707292491725
69	0310125	Pressure spring 0,9*8u/Ø12+0,5	STK	2	5707292135575
72	76229	Bearing lining	STK	4	5707292491824
73	76145	Bush for connecting shaft	STK	2	5707292491688
74	76149	Connecting shaft, for brake	STK	1	5707292491794
75	76141	Bottom right, brake	STK	1	5707292491589
76	114300	Pedal right for brake	STK	1	5707292605030
77	76143	House right, for brake	STK	1	5707292491633
78	76148	House left, for brake	STK	1	5707292491787
79	76144	Cover for spring, brake	STK	2	5707292491657
80	0308713	Stainless spring 1,0*6*40mm*17	STK	2	5707292502032
81	114304	Pedal left for brake	STK	1	5707292605047
82	76146	Bottom left, for brake	STK	1	5707292491749
83	1940039	Eco-syn z 4*16 stainless	STK	4	5707292502070
84	3004020	Ø290 wheel air w. quick releas	STK	2	5707292475046
84	3004030	Ø290 wheel pu. w.quick release	STK	2	5707292475053
86	6153550	Knob spring Ø 7.5x5.5 mm	STK	2	5707292513717
90	0609816	Stainless insex screw 8*16	STK	2	5707292138569
91	1105080	Stainless washer 8mm	STK	2	5707292140364
94	1105080	Stainless washer 8mm	STK	2	5707292140364
95	0602008	Stainless insex M5*10	STK	4	5707292542762
96	113790	damper with red hammer	STK	2	5707292601407
97	76069	Distance bush	STK	2	5707292481641
98	1130500	Stainless washer M5, din9021	STK	4	5707292516343
99	0381000	cable adjuster with nut only	STK	1	5707292544018
100	1602800	Steelnut 5mm, FZB	STK	1	5707292141262
101	5102999	Index Casing for stingray	STK	2	5707292542755
102	0371854-1	Soft inner cable for Stingray	STK	2	5707292536945
103	76153	Brake handle for disk brake	STK	2	5707292510273
104	76236	Holder for brake, Right	STK	1	5707292518422
105	1811105	Screw 4.2x16uh, stainless	STK	6	5707292141699
106	76235	Holder for brake, left	STK	1	5707292518415
107	82559	Release button	STK	2	5707292124760
108	0308710	Rf. Spring 0.5*8*10mm*4v	STK	2	5707292135483
109	76159	Bush for locking pin	STK	2	5707292518446
110	76295	Locking pin, disk brake	STK	2	5707292542830
111	0805004	Stopskrue M3*12 rf	STK	2	5707292518354
112	76156	Cable retainer	STK	2	5707292510280
113	3503538	Disk brake right dM60	STK	1	5707292518460
114	0387000	End nipple for outer casing	STK	3	5707292136091
115	0602195	Insex M6*12 stainless	STK	4	5707292404701
116	3503539	Disk brake dM60 left	STK	1	5707292518484
118	76151	Axle for disk brake	STK	2	5707292535351
120	1607005	Locknut 12 mm, A2	STK	2	5707292535368
121	3004065	Cover for 12½" wheel	STK	2	5707292520203
122	76238	Bracket	STK	2	5707292518682
123	0529047	Pin, 5*20mm, stainless 303	STK	2	5707292509840
136	0235073	Cable entry with talkum	STK	1	5707292581617
137	76314	Axle for T-frame	STK	1	5707292538604

138	1606500	Lock nut 6 mm	STK	4	5707292141361
139	1103000	Fazet washer 6mm	STK	4	5707292140289
140	76313	Holder for T-frame	STK	1	5707292538598
141	5079364-01	T-frame mounted black	STK	1	5707292538963
142	0621600	Insex screw counters. 6*16	STK	4	5707292138965
143	76319	Angle reducing ring bush	STK	1	5707292543479
144	2501406	Nut protection, black, f/M8	STK	2	5707292375919
145	76038	Support disc Stingray	STK	2	5707292540324
150	102060	Cabel Holder	STK	1	5707292561336
180	0602007	Stainless insex M5*10	STK	2	5707292542779
117+119	3004037	ø290 Air racing, with disk	STK	2	5707292544803
117+119	3004027	ø290 PUR Racing, with disk	STK	2	5707292544797
Module	5087036	Upperpart Push brace	STK	1	5707292536273
Module	5087037-1	Lower part left, Push brace	STK	1	5707292544032
Module	5087038-1	Lower part right, Push brace	STK	1	5707292544049
Module	5087030-1	Upper frame mounted, black	STK	1	5707292587046

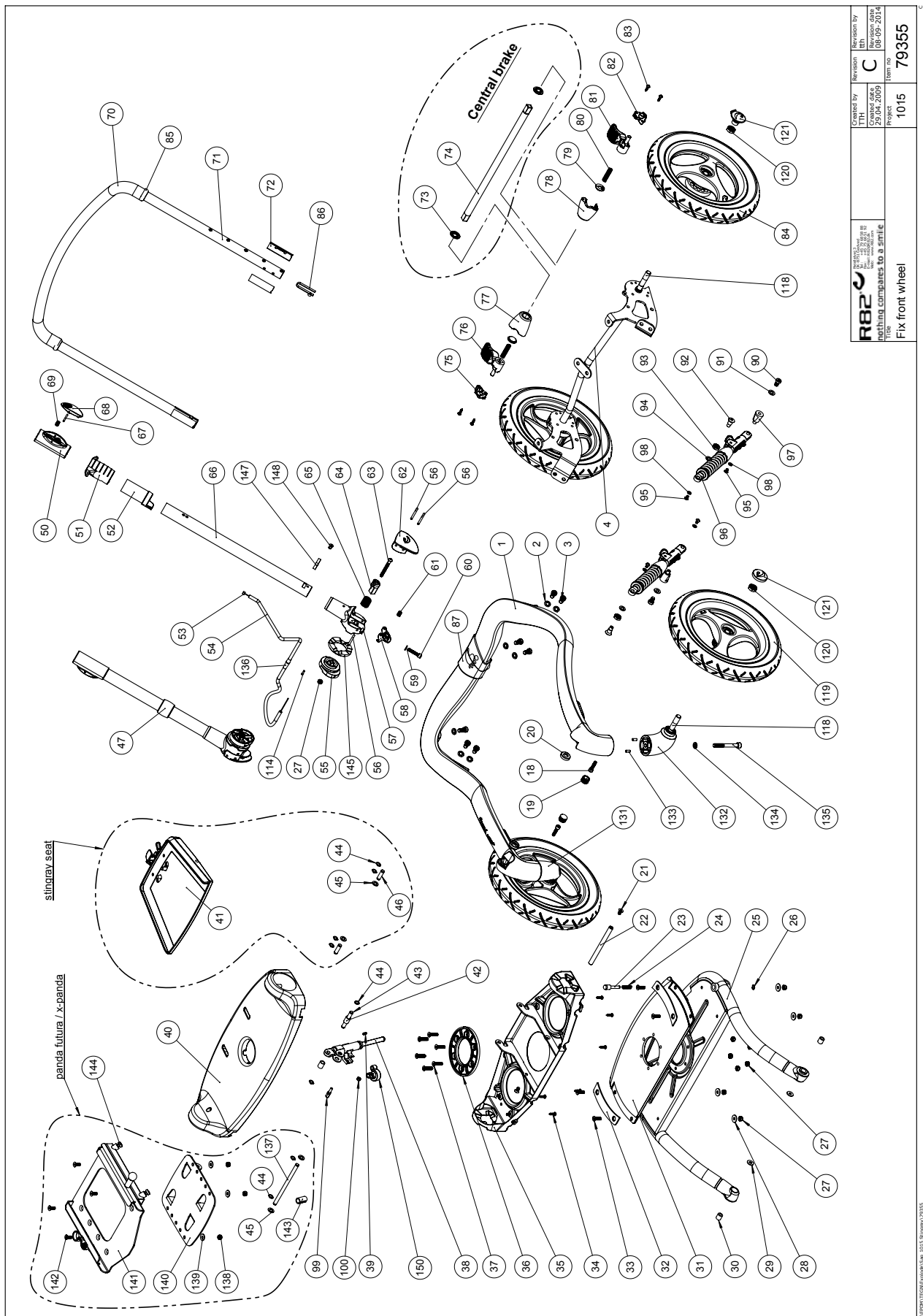






Position	No.	Description	Quantity	Unit of Measure	Ean code
1+87	112397	Carbon frame with Stepcover	PCS	1	5707292591012
2	1100500	Spring washer 8mm, stainless	PCS	8	5707292140142
3	0609816	Stainless insex screw 8*16	PCS	8	5707292138569
4	76027	Rear wheel suspension, black	PCS	1	5707292476623
18	0602426	Insex M6*25 rustfri, eslok	PCS	2	5707292539854
19	2501550	Blind cap 18	PCS	2	5707292502254
20	76008	Bush for knee, pom	PCS	2	5707292481085
21	0621200	Insex screw 6*12mm	PCS	2	5707292138958
22	76042	Axle for springstopper	PCS	1	5707292491497
23	111480	Stop pin	PCS	1	5707292590206
24	0308714	Stainless spring 1,3*7*23 5½V	PCS	1	5707292521040
26	1145050	Lock washer 5mm axle	PCS	1	5707292140579
27	1631060	Stainless lock nut 6mm	PCS	2	5707292141446
29	1101950	Washer Ø6,1-16*1 mm, FZB	PCS	2	5707292140210
30	76018	Bush for knee joint	PCS	2	5707292481245
34	1940039	Eco-syn z 4*16 stainless	PCS	8	5707292502070
38	2207040	Springstopper l=102/22	PCS	1	5707292473127
39	0388006	Screwnipple 5*7,5mm	PCS	1	5707292136114
40	76034	Cover for bridge	PCS	1	5707292476838
41	110176	T-frame for Stingray	PCS	1	5707292598141
42	1350024	Distance piece 14*15*8,2mm	PCS	2	5707292140920
43	76043	Axle for springstopper	PCS	1	5707292481450
44	1145060	Locking washer, axle stainless	PCS	4	5707292375056
45	1310711	Nylon washer 15x8,4x1,5mm	PCS	2	5707292429933
50	76220	Height adjustment	PCS	2	5707292491718
51	76231	Handle for tilt in space	PCS	1	5707292491855
53	0371854-1	Soft inner cable for Stingray	PCS	1	5707292536945
54	5002995	Cable for tilt of seat	PCS	1	5707292542724
55	76064	Eccentric for lock	PCS	2	5707292481627
56	0530009	Cyl.pin Ø4*50 mm stainless	PCS	4	5707292502445
58	76066	Safety lock for handbrake	PCS	2	5707292491558
61	0310122	Compression spring 0,9*8u	PCS	2	5707292135544
62	76062	Handle of a lock R82	PCS	2	5707292481603
63	0641637	Button head M6*60 stainless	PCS	2	5707292540317
64	76063	Handle of a lock	PCS	2	5707292481610
65	0308711	Stainless spring 2,0*16*20mm	PCS	2	5707292502018
67	0530011	Pin Ø3x32 mm.	PCS	2	5707292516220
68	76221	Push button for push brace	PCS	2	5707292491725
69	0310125	Pressure spring 0,9*8u/Ø12+0,5	PCS	2	5707292135575
72	76229	Bearing lining	PCS	4	5707292491824
73	76145	Bush for connecting shaft	PCS	2	5707292491688
74	76149	Connecting shaft, for brake	PCS	1	5707292491794
75	76141	Bottom right, brake	PCS	1	5707292491589
76	114300	Pedal right for brake	PCS	1	5707292605030
77	76143	House right, for brake	PCS	1	5707292491633
78	76148	House left, for brake	PCS	1	5707292491787
79	76144	Cover for spring, brake	PCS	2	5707292491657
80	0308713	Stainless spring 1,0*6*40mm*17	PCS	2	5707292502032
81	114304	Pedal left for brake	PCS	1	5707292605047

82	76146	Bottom left, for brake	PCS	1	5707292491749
83	1940039	Eco-syn z 4*16 stainless	PCS	4	5707292502070
84	3004026	Ø290 wheel air, fixed axle	PCS	2	5707292525628
84	3004034	Ø290 solid racing, fixed axle	PCS	2	5707292525635
86	6153550	Knob spring Ø 7.5x5.5 mm	PCS	2	5707292513717
90	0609816	Stainless insex screw 8*16	PCS	2	5707292138569
91	1105080	Stainless washer 8mm	PCS	2	5707292140364
94	1105080	Stainless washer 8mm	PCS	2	5707292140364
95	0602008	Stainless insex M5*10	PCS	4	5707292542762
96	113790	damper with red hammer	PCS	2	5707292601407
97	76069	Distance bush	PCS	2	5707292481641
98	1130500	Stainless washer M5, din9021	PCS	4	5707292516343
99	0381000	cable adjuster with nut only	PCS	1	5707292544018
100	1602800	Steelnut 5mm, FZB	PCS	1	5707292141262
101	5102999	Index Casing for stingray	PCS	2	5707292542755
105	1811105	Screw 4.2x16uh, stainless	PCS	6	5707292141699
112	76156	Cable retainer	PCS	2	5707292510280
113	3503538	Disk brake right dM60	PCS	1	5707292518460
114	0387000	End nipple for outer casing	PCS	3	5707292136091
115	0602195	Insex M6*12 stainless	PCS	4	5707292404701
116	3503539	Disk brake dM60 left	PCS	1	5707292518484
118	76151	Axle for disk brake	PCS	4	5707292535351
119	3004035	Ø290 air racing, fixed axle	PCS	2	5707292506429
119	3004025	Ø290 wheel pu, fixed axle	PCS	2	5707292506412
120	1607005	Locknut 12 mm, A2	PCS	4	5707292535368
121	3004065	Cover for 12½" wheel	PCS	4	5707292520203
122	76238	Bracket	PCS	2	5707292518682
131	76010	Frontwheel bracket, right	PCS	1	5707292476821
132	76009	Frontwheel bracket, left	PCS	1	5707292476814
133	0529048	Pin Ø5,0x14 mm.	PCS	4	5707292524478
134	1100500	Spring washer 8mm, stainless	PCS	2	5707292140142
135	0603700	Insex screw 8*70	PCS	2	5707292138293
136	0235073	Cable entry with talkum	PCS	1	5707292581617
137	76314	Axle for T-frame	PCS	1	5707292538604
145	76038	Support disc Stingray	PCS	2	5707292540324
150	102060	Cabel Holder	PCS	1	5707292561336
180	0602007	Stainless insex M5*10	PCS	2	5707292542779
117+119	3004037	ø290 Air racing, with disk	PCS	2	5707292544803
117+119	3004027	ø290 PUR Racing, with disk	PCS	2	5707292544797
117-119	3004027	ø290 PUR Racing, with disk	PCS	2	5707292544797
Module	5087036	Upperpart Push brace	PCS	1	5707292536273
Module	5087037-1	Lower part left, Push brace	PCS	1	5707292544032
Module	5087038-1	Lower part right, Push brace	PCS	1	5707292544049
Module	5087030-1	Upper frame mounted, black	PCS	1	5707292587046
Module	5076235	Holder for brake, left mounted	PCS	1	5707292525413
Module	5076236	Holder for brake, right mounted	PCS	1	5707292525420



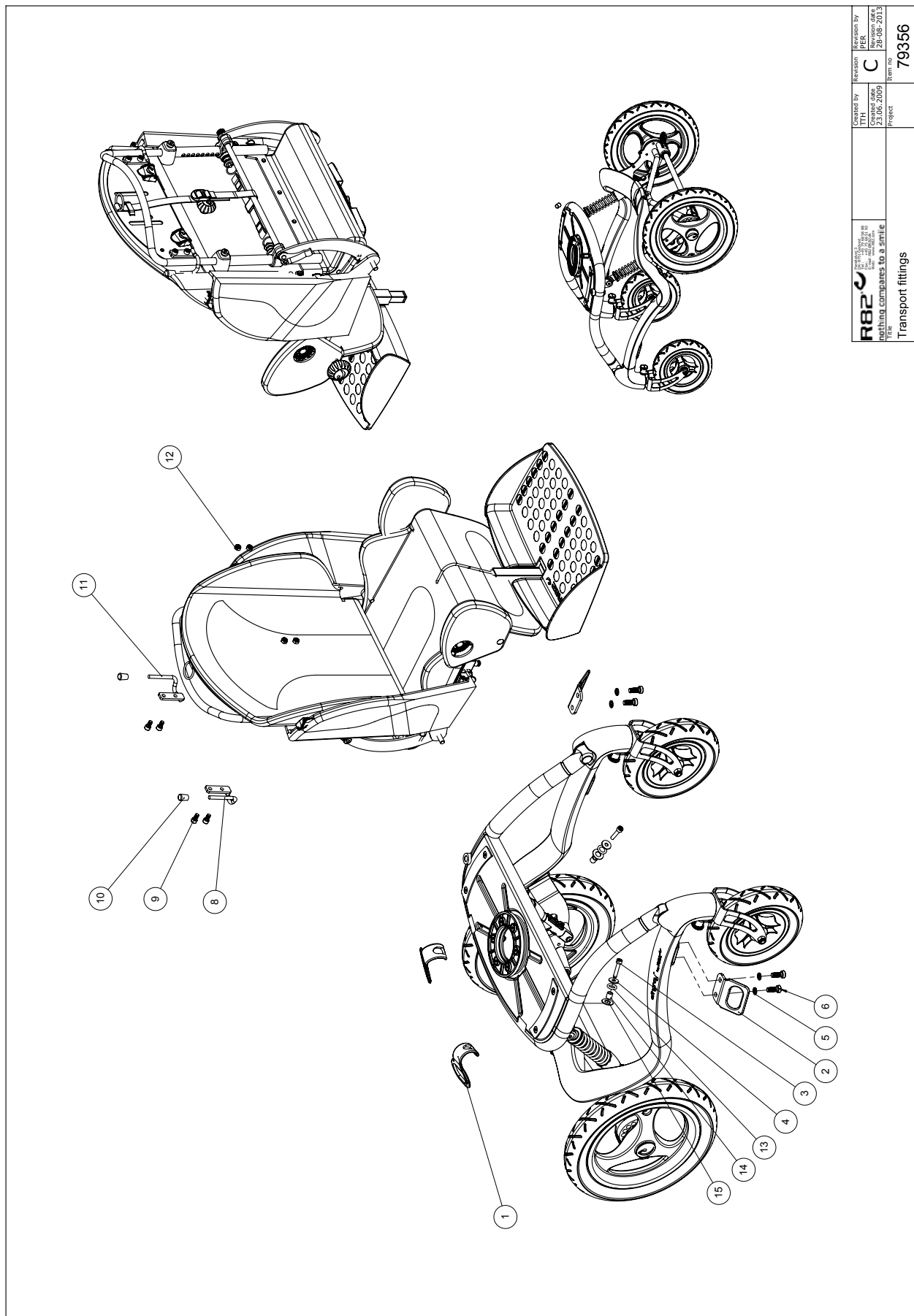
R82 <sup>®</sup> nothing compares to a smile	Created by JYBA DKK	Revision by C	Revision date 08-09-2014
	Created date 29.04.2009	Project 1015	Item no. 79355
Fix front wheel			

Position	No.	Description	Quantity	Unit of Measure	Ean code
1+87	112397	Carbon frame with Stepcover	PCS	1	5707292591012
2	1100500	Spring washer 8mm, stainless	PCS	8	5707292140142
3	0609816	Stainless insex screw 8*16	PCS	8	5707292138569
4	76027	Rear wheel suspension, black	PCS	1	5707292476623
18	0602426	Insex M6*25 rustfri, eslok	PCS	2	5707292539854
19	2501550	Blind cap 18	PCS	2	5707292502254
20	76008	Bush for knee, pom	PCS	2	5707292481085
21	0621200	Insex screw 6*12mm	PCS	2	5707292138958
22	76042	Axle for springstopper	PCS	1	5707292491497
23	111480	Stop pin	PCS	1	5707292590206
24	0308714	Stainless spring 1,3*7*23 5½V	PCS	1	5707292521040
26	1145050	Lock washer 5mm axle	PCS	1	5707292140579
27	1631060	Stainless lock nut 6mm	PCS	2	5707292141446
29	1101950	Washer Ø6,1-16*1 mm, FZB	PCS	2	5707292140210
30	76018	Bush for knee joint	PCS	2	5707292481245
34	1940039	Eco-syn z 4*16 stainless	PCS	8	5707292502070
38	2207040	Springstopper l=102/22	PCS	1	5707292473127
39	0388006	Screwnipple 5*7,5mm	PCS	1	5707292136114
40	76034	Cover for bridge	PCS	1	5707292476838
42	1350024	Distance piece 14*15*8,2mm	PCS	2	5707292140920
43	76043	Axle for springstopper	PCS	1	5707292481450
44	1145060	Locking washer, axle stainless	PCS	4	5707292375056
45	1310711	Nylon washer 15x8,4x1,5mm	PCS	2	5707292429933
50	76220	Height adjustment	PCS	2	5707292491718
51	76231	Handle for tilt in space	PCS	1	5707292491855
53	0371854-1	Soft inner cable for Stingray	PCS	1	5707292536945
54	5002995	Cable for tilt of seat	PCS	1	5707292542724
55	76064	Eccentric for lock	PCS	2	5707292481627
56	0530009	Cyl.pin Ø4*50 mm stainless	PCS	4	5707292502445
58	76066	Safety lock for handbrake	PCS	2	5707292491558
61	0310122	Compression spring 0,9*8u	PCS	2	5707292135544
62	76062	Handle of a lock R82	PCS	2	5707292481603
63	0641637	Button head M6*60 stainless	PCS	2	5707292540317
64	76063	Handle of a lock	PCS	2	5707292481610
65	0308711	Stainless spring 2,0*16*20mm	PCS	2	5707292502018
67	0530011	Pin Ø3x32 mm.	PCS	2	5707292516220
68	76221	Push button for push brace	PCS	2	5707292491725
69	0310125	Pressure spring 0,9*8u/Ø12+0,5	PCS	2	5707292135575
72	76229	Bearing lining	PCS	4	5707292491824
73	76145	Bush for connecting shaft	PCS	2	5707292491688
74	76149	Connecting shaft, for brake	PCS	1	5707292491794
75	76141	Bottom right, brake	PCS	1	5707292491589
76	114300	Pedal right for brake	PCS	1	5707292605030
77	76143	House right, for brake	PCS	1	5707292491633
78	76148	House left, for brake	PCS	1	5707292491787
79	76144	Cover for spring, brake	PCS	2	5707292491657
80	0308713	Stainless spring 1,0*6*40mm*17	PCS	2	5707292502032
81	114304	Pedal left for brake	PCS	1	5707292605047
82	76146	Bottom left, for brake	PCS	1	5707292491749



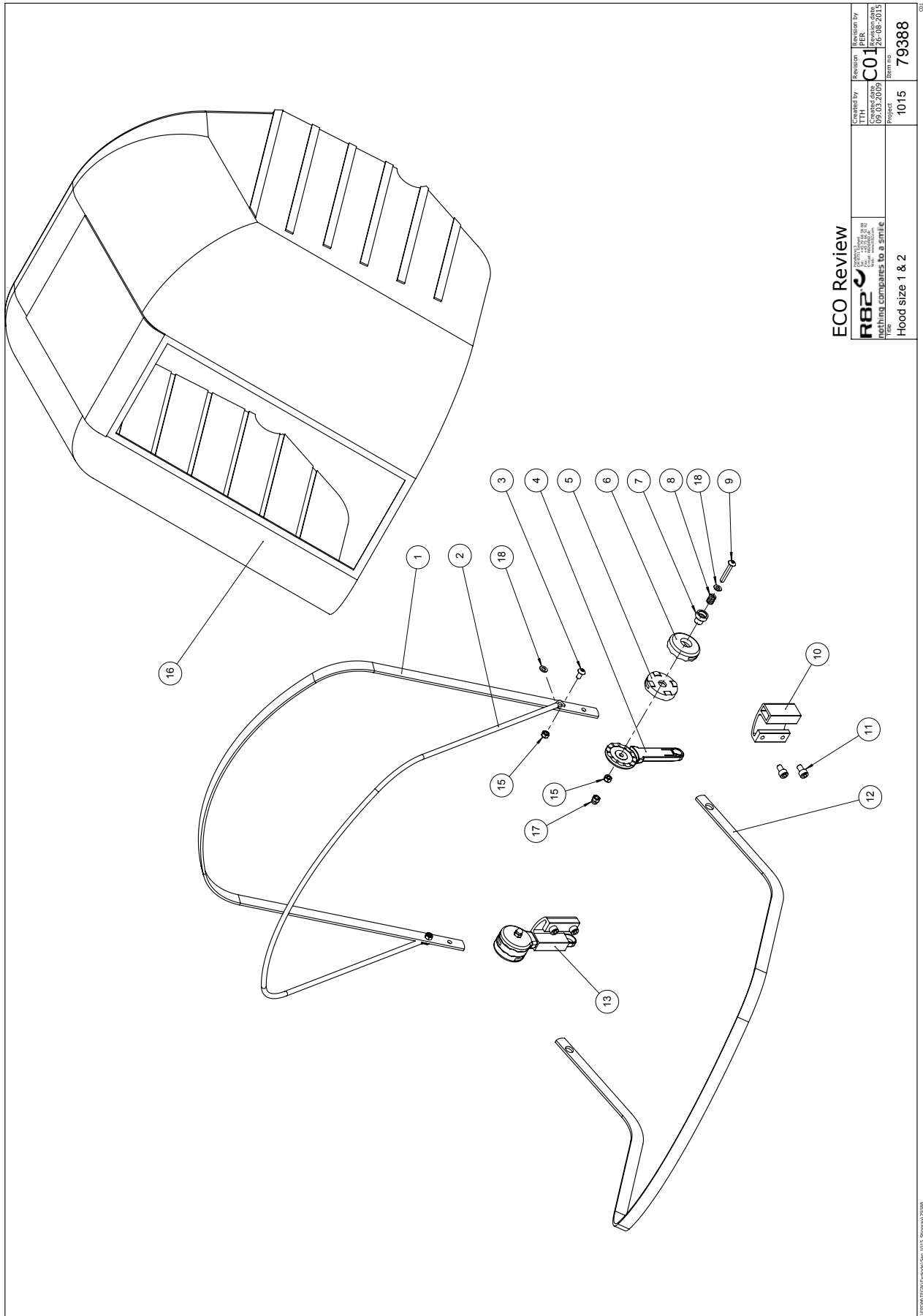
83	1940039	Eco-syn z 4*16 stainless	PCS	4	5707292502070
84	3004034	Ø290 solid racing, fixed axle	PCS	2	5707292525635
86	6153550	Knob spring Ø 7.5x5.5 mm	PCS	2	5707292513717
90	0609816	Stainless insex screw 8*16	PCS	2	5707292138569
91	1105080	Stainless washer 8mm	PCS	2	5707292140364
94	1105080	Stainless washer 8mm	PCS	2	5707292140364
95	0602008	Stainless insex M5*10	PCS	4	5707292542762
96	113790	dampner with red hammer	PCS	2	5707292601407
97	76069	Distance bush	PCS	2	5707292481641
98	1130500	Stainless washer M5, din9021	PCS	4	5707292516343
99	0381000	cable adjuster with nut only	PCS	1	5707292544018
100	1602800	Steelnut 5mm, FZB	PCS	1	5707292141262
114	0387000	End nipple for outer casing	PCS	1	5707292136091
118	76151	Axle for disk brake	PCS	4	5707292535351
119	3004025	Ø290 wheel pu, fixed axle	PCS	2	5707292506412
120	1607005	Locknut 12 mm, A2	PCS	4	5707292535368
121	3004065	Cover for 12½" wheel	PCS	4	5707292520203
131	76010	Frontwheel bracket, right	PCS	1	5707292476821
132	76009	Frontwheel bracket, left	PCS	1	5707292476814
133	0529048	Pin Ø5,0x14 mm.	PCS	4	5707292524478
134	1100500	Spring washer 8mm, stainless	PCS	2	5707292140142
135	0603700	Insex screw 8*70	PCS	2	5707292138293
136	0235073	Cable entry with talkum	PCS	1	5707292581617
137	76314	Axle for T-frame	PCS	1	5707292538604
138	1606500	Lock nut 6 mm	PCS	4	5707292141361
139	1103000	Fazet washer 6mm	PCS	4	5707292140289
140	76313	Holder for T-frame	PCS	1	5707292538598
141	5079364-01	T-frame mounted black	PCS	1	5707292538963
142	0621600	Insex screw counters. 6*16	PCS	4	5707292138965
143	76319	Angle reducing ring bush	PCS	1	5707292543479
144	2501406	Nut protection, black, f/M8	PCS	2	5707292375919
145	76038	Support disc Stingray	PCS	2	5707292540324
150	102060	Cabel Holder	PCS	1	5707292561336
Module	5087036	Upperpart Push brace	PCS	1	5707292536273
Module	5087037-1	Lower part left, Push brace	PCS	1	5707292544032
Module	5087038-1	Lower part right, Push brace	PCS	1	5707292544049
Module	5087030-1	Upper frame mounted, black	PCS	1	5707292587046





 nothing compares to a smile	<div>Created by JYBA Date 23.06.2009</div>	<div>Revision C Date 28.08.2013</div>	Item no  79356	
Transport fittings				

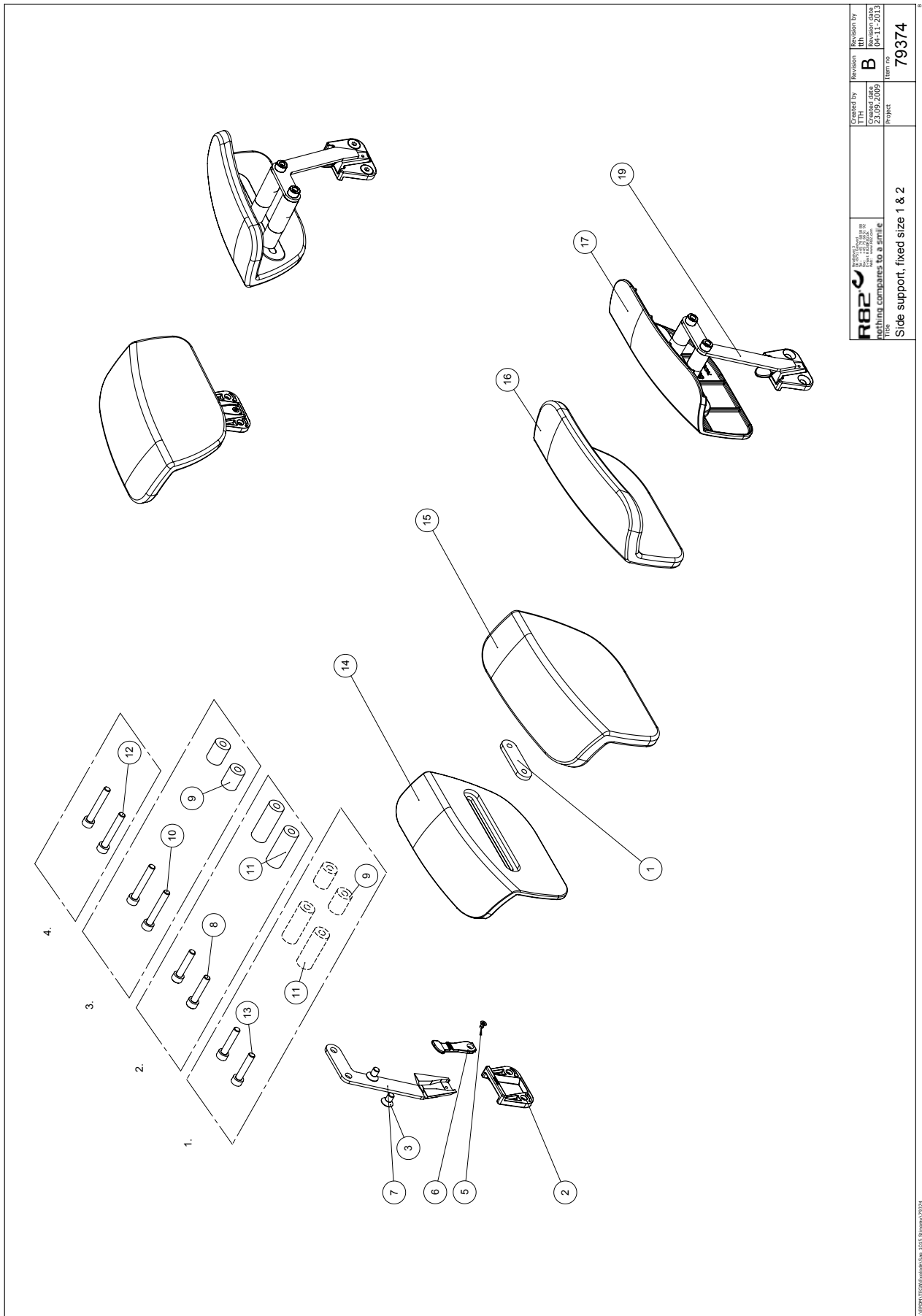
Position	No.	Description	Quantity	Unit of Measure	Ean code
1	109016	Clamping bracket, rear part	PCS	2	5707292574893
2	76131	Clamping bracket, front part	PCS	2	5707292483126
3	0602426	Insex M6*25 rustfri, eslok	PCS	2	5707292539854
4	1102001	Washer 6*20*1,5 mm, RF	PCS	2	5707292565754
5	1100500	Spring washer 8mm, stainless	PCS	4	5707292140142
6	0609820	Stainless insex screw 8*20	PCS	4	5707292138576
8	76305	Bracket for trap, right	PCS	1	5707292514301
9	0602195	Insex M6*12 stainless	PCS	4	5707292404701
10	3501852	Black pvc cap 5,0*24mm	PCS	2	5707292569653
11	76304	Bracket for trap, left	PCS	1	5707292514295
12	1631060	Stainless lock nut 6mm	PCS	4	5707292141446
13	0104550	O-ringe 11,0 X 3,5 NBR70	PCS	2	5707292564139
14	81219	Bush for headrestmounting	PCS	2	5707292434265
15	1354520	Spacer black 5*20*10,5mm	PCS	2	5707292140982



ECO Review

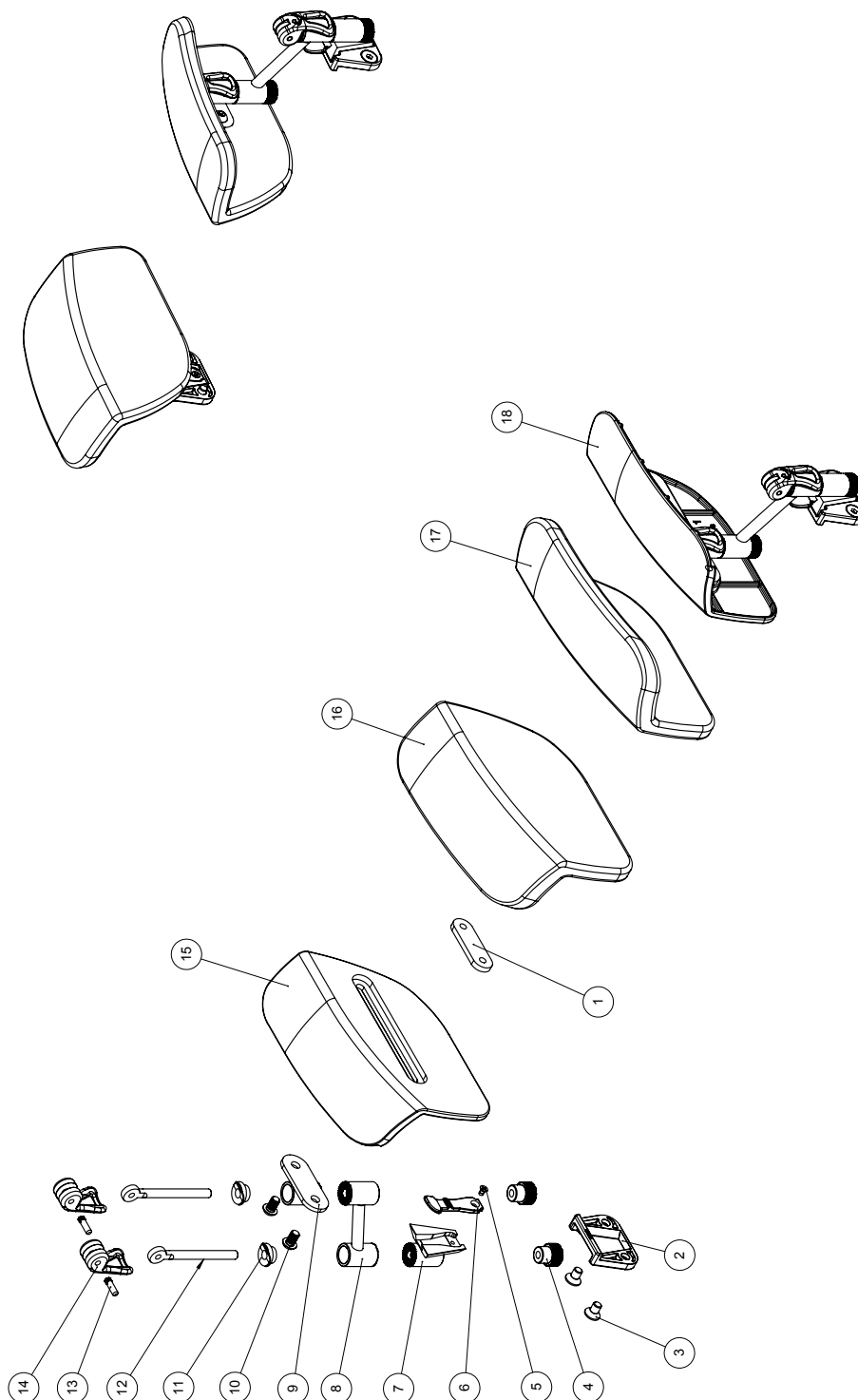
Created by TTH	Revision C01	Revision by PER
Creation date 06.03.2009	Revision date 28.08.2013	
Part name Hood size 1 & 2	Item no. 79388	

Position	No.	Description	Quantity	Unit of Measure	Ean code
1	76289	brace 3 size 1	PCS	1	5707292505255
1	76293	brace 3 size 2	PCS	1	5707292505286
2	76288	brace 2 size 1	PCS	1	5707292505231
2	76292	brace 2 size 2	PCS	1	5707292505279
3	0658012	Button head M5*12 FZB	PCS	2	5707292139382
4	100893	Tooth disk ø40, inside	PCS	2	5707292554574
5	100891	Tooth disk ø40, middle	PCS	2	5707292554550
6	100892	Tooth disk ø40, outside	PCS	2	5707292554567
7	100890	Distance bush Stingray	PCS	2	5707292555564
8	0302011	Spring i5,2*17*1,6*5v rf	PCS	2	5707292555489
9	0640930	Button head M5*30 FZB	PCS	2	5707292139221
10	100836	Holder for hood	PCS	1	5707292553072
11	0609810	Insex screw ch M6*10 stainless	PCS	4	5707292440594
12	76287	brace 1 size 1	PCS	1	5707292505248
12	76291	brace 1 size 2	PCS	1	5707292505262
13	100836	Holder for hood	PCS	1	5707292553072
15	1631050	Prevailing torque lock nut m5	PCS	4	5707292510662
16	8740110-1	Hood cover str. 1, sort	PCS	1	5707292616241
16	8740120-1	Hood cover str. 2, sort	PCS	1	5707292616258
17	1781050	Top nut M5 / lock rf	PCS	2	5707292530639
18	1102902	Washer 5mm, A2	PCS	4	5707292411280



<b>R82</b> nothing compares to a smile	Created by JYBA Created date 23.09.2009	Revision <b>B</b> Revision date 04-11-2013	Revision by JYBA Revision date 04-11-2013
Title Side support, fixed size 1 & 2		Item no 79374	

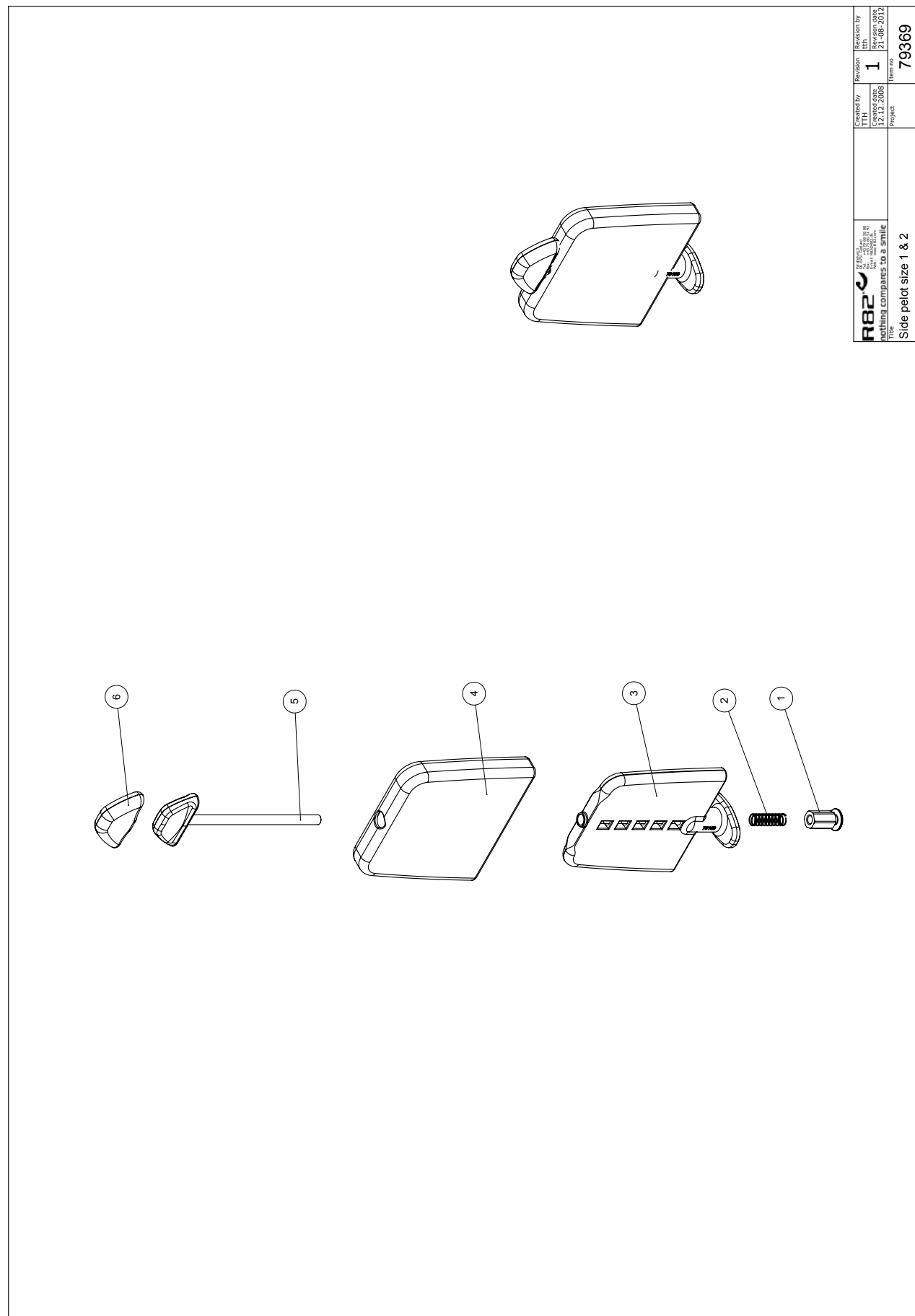
Position	No.	Description	Quantity	Unit of Measure	Ean code
1	75840	Back Plate for hip support	PIECES	2	5707292503329
2	76175	Holder for dovetail	PIECES	2	5707292503336
3	0609720	Stainless insex 6*10	PIECES	4	5707292446039
5	1811102	M3x6 UH	PIECES	2	5707292510648
6	76176	Safty lock	PIECES	2	5707292503367
7*	76265	Bracket with dovetail size 2 R	PIECES	1	5707292516305
	76263	Bracket with dovetail size 1 R	PIECES	1	5707292516282
8	0602455	Insex M6*50 stainless	PIECES	4	5707292407283
9	1310677	Distance piece black Ø6,3*Ø15*20MM	PIECES	4	5707292516329
10	0602430	Insex M6*30 stainless	PIECES	4	5707292407276
11	1310678	Distance piece black Ø6,3*Ø15*40MM	PIECES	4	5707292516336
12	0609810	Stainless insex CH M6*10	PIECES	4	5707292440594
13	0602470	Insex M6*70, stainless	PIECES	4	5707292407870
14*	76180	Side plate, size 2 Right	PIECES	1	5707292491695
	76178	Side plate, size 1 Right	PIECES	1	5707292491664
15+16*	8730311	Cover for hip support sz.1, blue	SET	1	5707292514158
	8730312	Cover for hip support sz.1, red	SET	1	5707292514165
	8730313	Cover for hip support sz.1, green	SET	1	5707292514172
	8730321	Cover for hip support sz.2, blue	SET	1	5707292514189
	8730322	Cover for hip support sz.2, red	SET	1	5707292514196
	8730323	Cover for hip support sz.2, green	SET	1	5707292514202
17*	76179	Side plate, size 2 Left	PIECES	1	5707292491671
	76177	Side plate, size 1 Left	PIECES	1	5707292491640
19*	76264	Bracket with dovetail size 2 L	PIECES	1	5707292516299
	76262	Bracket for hood 2	PIECES	1	5707292488411



<b>R82</b> <small>nothing compares to a smile!</small> <small>Stingray is a registered trademark of R82 A/S</small>	Created by	Revision	Revision by
	Created date	A	Revision date
	Project	1015	12-09-2012
Title		Item no	
Side support, flexible size 1 & 2		79380	



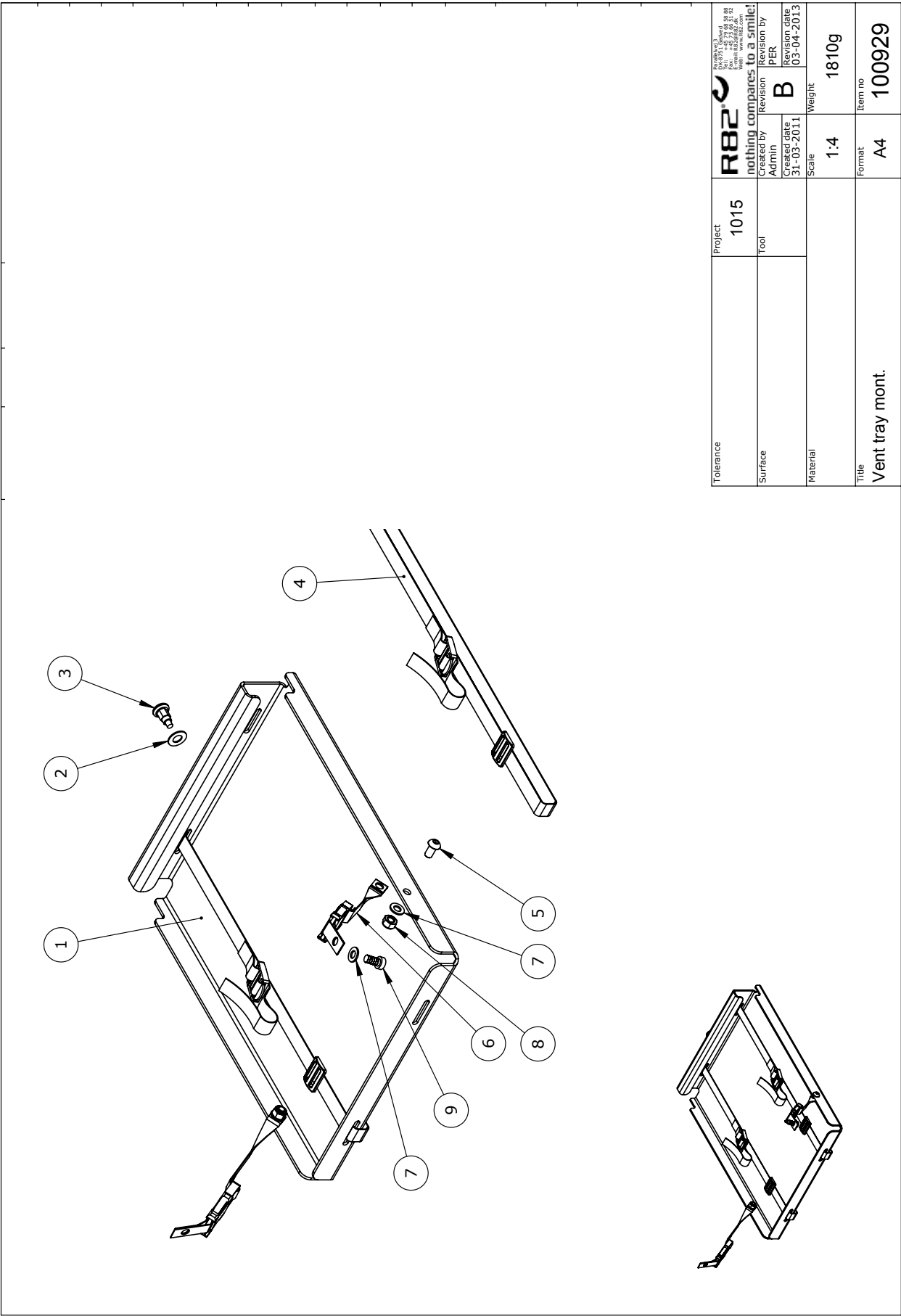
Position	No.	Description	Quantity	Unit of Measure	Ean code
1	75840	Back plate for hip support	PIECES	2	5707292503329
2	76175	Holder for dovetail	PIECES	2	5707292503336
3	0609720	Stainless insex 6*10	PIECES	4	5707292446039
4	76183	Handle M6 with bush	PIECES	4	5707292505859
5	1811102	M3x6 UH A2	PIECES	2	5707292510648
6	76176	Safety lock	PIECES	2	5707292503367
7	76173	Toothdisc bracket w. Dovetail	PIECES	2	5707292503947
8	76171	Cranck for side support	PIECES	2	5707292491602
9	75838	Toothdisc bracket f. Hip supp.	PIECES	2	5707292503916
10	0659005	Insex button head M6*10,stainl	PIECES	4	5707292423740
11	76189	Saddle for excentrik hande	PIECES	4	5707292503374
12	76201	Stay with M6	PIECES	4	5707292503992
13	0529045	Pin 4*15mm, stainless 303	PIECES	4	5707292509833
14	76188	Handle eccentric	PIECES	4	5707292503350
15*	76177	Side plate, size 1 left	PIECES	1	5707292491640
	76179	Side plate, size 2 left	PIECES	1	5707292491671
16+17*	8730311	Stingray hipsupport cover 1	SET	1	5707292514158
	8730321	Stingray hip support cover 2	SET	1	5707292514189
18*	76178	Side plate, size 1 right	PIECES	1	5707292491664
	76180	Side plate, size 2 right	PIECES	1	5707292491695



<b>R82</b> <small>nothing compares to a smile</small>	Corrected by TTH Created date 12.12.2008	Revision <b>1</b> Revision date 21-08-2012	Item no. <b>79369</b>

Side peld size 1 & 2

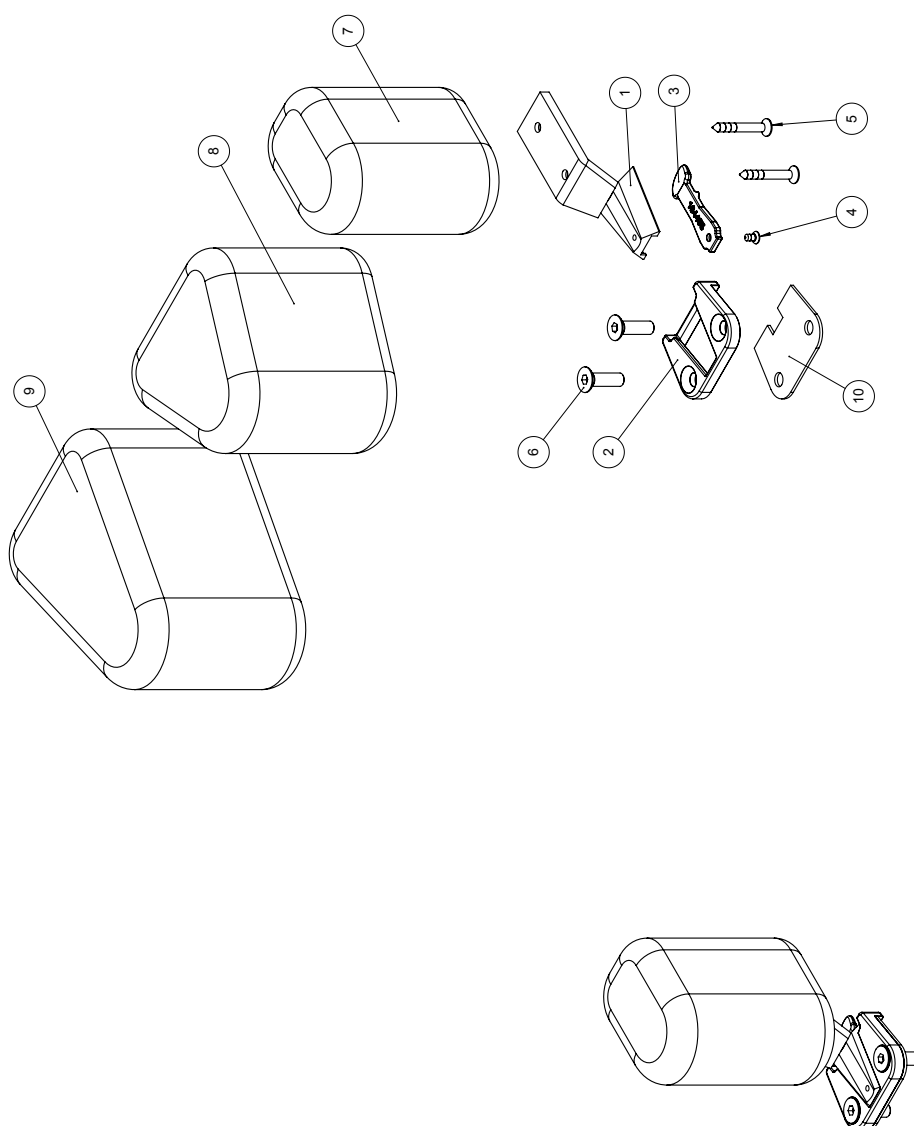
Position	No.	Description	Quantity	Unit of Measure	Ean code
1	76164	Hex nut for pelot	PIECES	1	5707292503497
2	0310100	Pressurespring 0,9*8*23*10,5v	PIECES	1	5707292135513
3*	5700580	Side support str.1 Sting	PIECES	2	5707292520982
	5700581	Side support str.2 Sting	PIECES	2	5707292520999
4*	5027240	Cover for side support size 1	PIECES	2	5707292520968
	5027241	Cover for side support size 2	PIECES	2	5707292521002
5*	76163	Knop for pelot, size 1	PIECES	1	5707292491596
	76168	Knop for pelot, size 2	PIECES	1	5707292503534
6	8720360	Covers for knobs on side supp.	SET	1	5707292555571



Tolerance	Project	<b>R82®</b> nothing compares to a smile! R82 A/S Parallelsvej 3 8751 Gedved Denmark Tel: +45 79 68 88 Fax: +45 75 66 51 E-mail: R82@R82.dk Web: R82.org			
Surface	Tool	Created by	Admin	Revision	PER
Material		Created date	31-03-2011	Revision date	03-04-2013
		Scale	1:4	Weight	1810g
Title	Vent tray mont.		Format	A4	Item no
					100929

C:\EPDM\Projects\1015\100929

Position	No.	Description	Quantity	Unit of Measure	Ean code
1	76290	Vent tray	PCS	1	5707292547354
2	1102500	Planning washer 10 mm	PCS	1	5707292140234
3	0380182	Locking house, complete M10*1	PCS	1	5707292357953
4	5540545	Strap for oxygen bottle	PCS	2	5707292480798
5	0661500	Button head screw 8*16 stainl.	PCS	2	5707292139559
6	5540541	Strap for vent tray	PCS	2	5707292552686
7	1105080	Stainless washer 8mm	PCS	4	5707292140364
8	1631080	Stainless lock nut 8mm	PCS	2	5707292141453
9	0609820	Stainless insex screw 8*20	PCS	2	5707292138576



<b>R82</b> <small>nothing compares to a smile</small> Title	Created by JYBA Created date 06.02.2009 Project	Revision <b>C</b> Revision date 30.01.2014 Item no	1015 79384

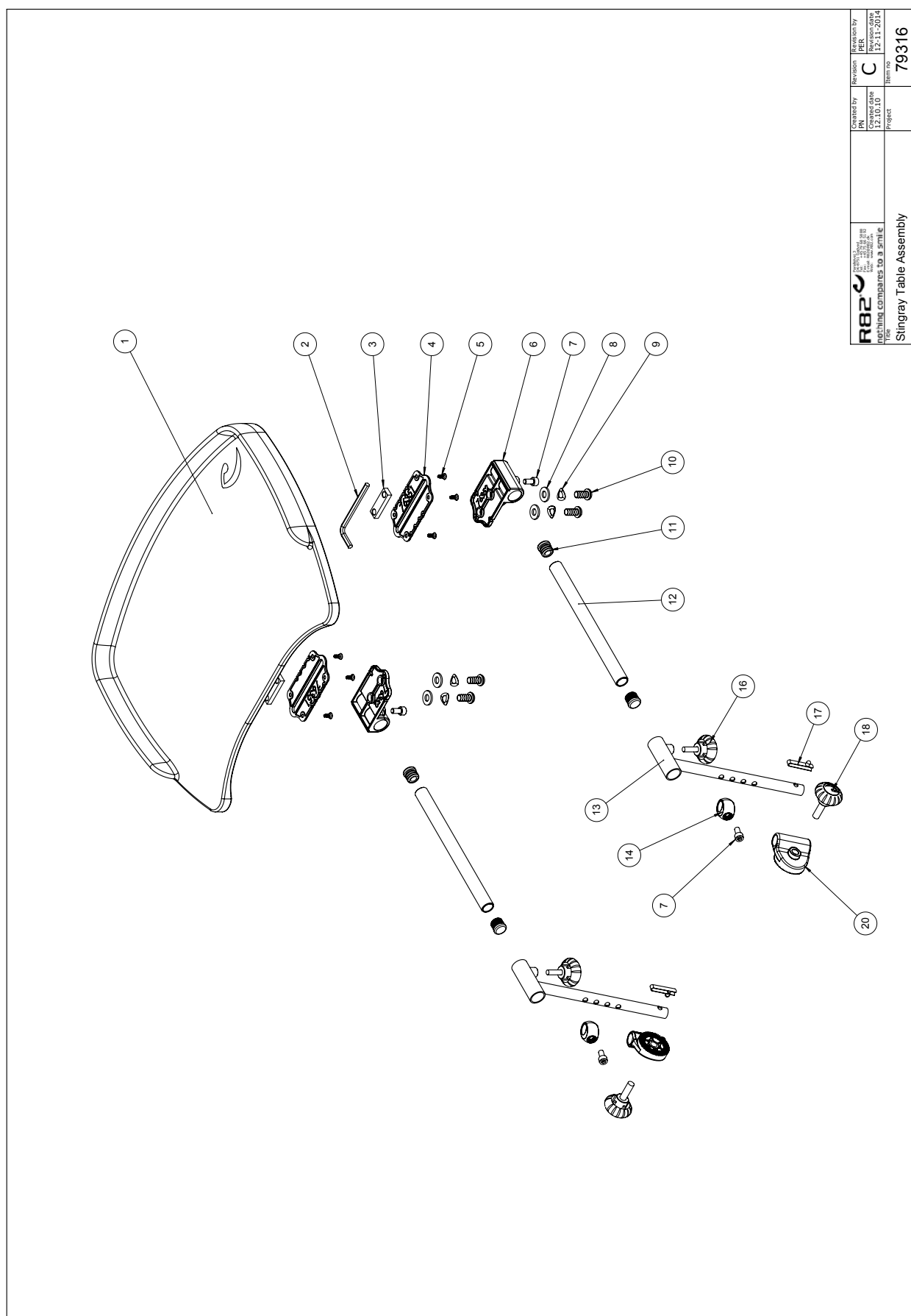
C:\PDP\Bilder\Katalog\Sting 1015 Stingray\79384

Position	No.	Description	Quantity	Unit of Measure	Ean code
1	76209	Mounting for pommel	PIECES	1	5707292543554
2	76175	Fitting	PIECES	1	5707292503336
3	76176	Safety lock	PIECES	1	5707292503367
4	1811102	M3x6 screw UH	PIECES	1	5707292510648
5	1811275	Screw 4*30MM	PIECES	2	5707292141743
6	0609731	Stainless inset 6*25 UH.	PIECES	2	5707292138514
7	6175110	Pommel, black PUR	PIECES	1	5707292466624
8	6175111	Pommel, black PUR	PIECES	1	5707292189103
9	6175112	Pommel, black PUR	PIECES	1	5707292189110
10	76320	Plate support for dovetail	PIECES	1	5707292543769



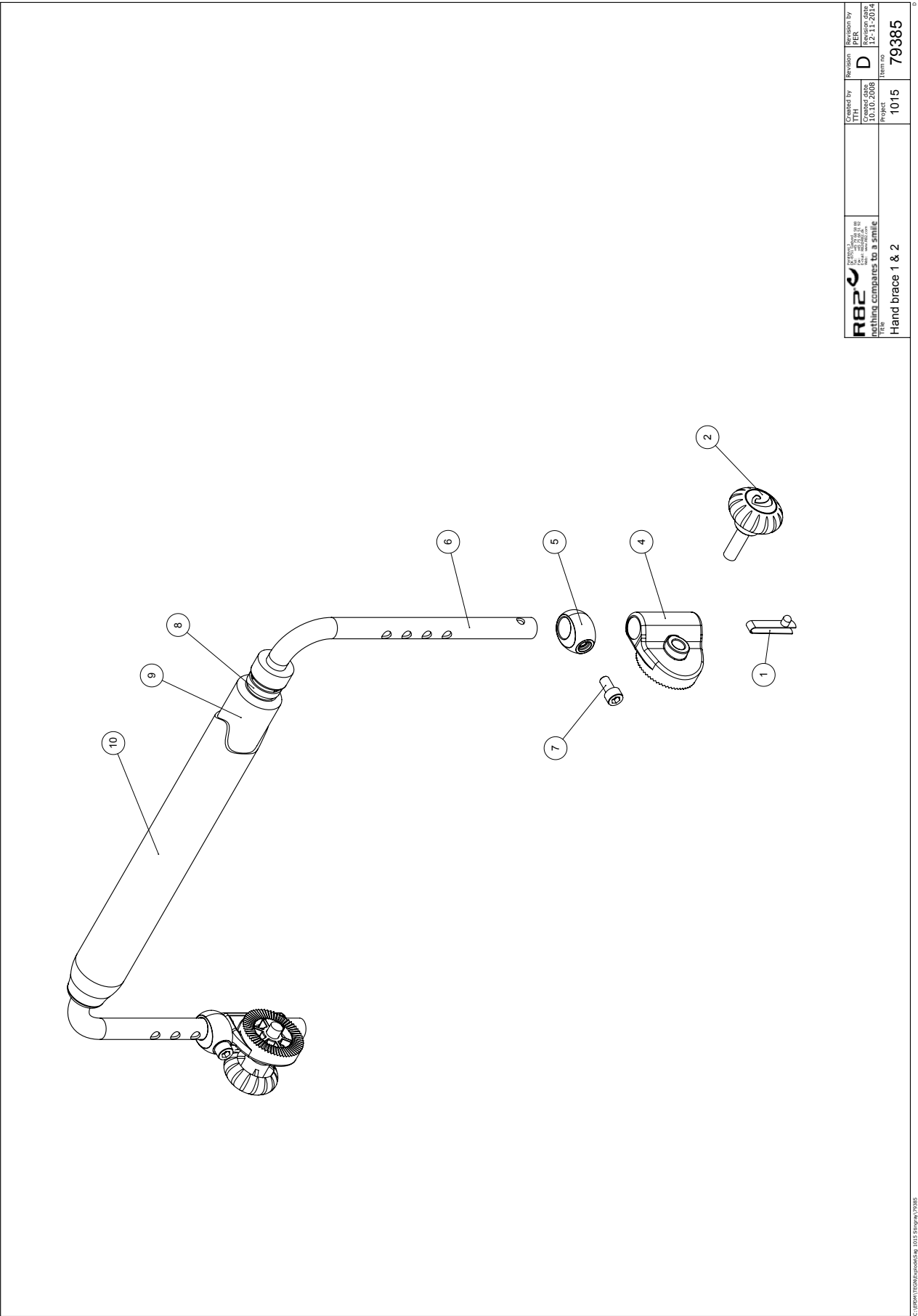


Position	No.	Description	Quantity	Unit of Measure	Ean code
1	2501600	Ferrule d15*1,0 black	PCS	4	5707292143969
2	70866	Pipe Ø16*1,5	PCS	2	5707292103376
3	0806010	Stainless stop screw 6*10	PCS	2	5707292139993
4	70255	Mounting f. Table Tiger	PCS	2	5707292101976
5	3652501	R82 handle M6*16mm screw	PCS	2	5707292413963
6	3501201	R82 handle M8*25mm screw	PCS	2	5707292413932
9	76240	Holder for hand brace	PCS	2	5707292506016
10	76355	Adjustment ring	PCS	2	5707292541765
11	0602190	Insex screw 6*12	PCS	2	5707292138088
12	6153700	Knob spring f.activity centre	PCS	2	5707292188601
13	76213	Bracket welded for tray, right	PCS	2	5707292506115
14	0609720	Stainless inset 6*10	PCS	4	5707292446039
15	76214	Plate for Stingray size 1	PCS	1	5707292505569
15	76219	Plate for Stingray size 2	PCS	1	5707292505576
17	0506508	Rivet 5*14, stainless	PCS	5	5707292359476
18	1310703	Spacer Ø11, Ø5,2, h2,5	PCS	5	5707292517951
19	76215	Rail for tray size 1	PCS	1	5707292517906
19	76216	Rail for tray size 2	PCS	1	5707292517913
20	2501500	Ferrule d12*0,5-1,5 int.black	PCS	2	5707292143952



 nothing compares to a smile <small>Engineering &amp; Design 100</small>
---

Position	No.	Description	Quantity	Unit of Measure	Ean code
1	76350	Table for Stingray, Grey	PIECES	1	5707292541727
2	0589500	Insex keys n5	PIECES	1	5707292137869
3	76356	Slidebar 12*40*6, 2x M8	PIECES	2	5707292544339
4	76351	Mounting plate	PIECES	2	5707292541741
5	1940011	Plastite 60, 4*8	PIECES	8	5707292545978
6	76352	Mounting bracket	PIECES	2	5707292541758
7	0602190	Insex screw 6*12	PIECES	4	5707292138088
8	1105080	Stainless washer 8mm	PIECES	4	5707292140364
9	1100500	Spring washer 8mm, stainless	PIECES	4	5707292140142
10	0661500	Button head screw 8*16 stainl.	PIECES	4	5707292139559
11	2501600	Ferrule d15*1,0 black	PIECES	4	5707292143969
12	70866	Pipe Ø16*1,5	PIECES	2	5707292103376
13	76213	Bracket welded for tray, right	PIECES	2	5707292506115
14	76355	Adjustment ring	PIECES	2	5707292541765
16	3652501	R82 handle M6*16mm screw	PIECES	2	5707292413963
17	6153700	Knob spring f.activity centre	PIECES	2	5707292188601
18	3501201	R82 handle M8*25mm screw	PIECES	2	5707292413932
20	76240	Holder for hand brace	PIECES	2	5707292506016



<b>R82</b> nothing compares to a smile Title	Created by 10.10.2008 Project	Revision D 10.10.2008 Revision date	Revision by 12.11.2014 Revision date
	1015	Item no	79385
	Hand brace 1 & 2		

C:\Users\TSC\Documents\1015 Stingray\1015

Position	No.	Description	Quantity	Unit of Measure	Ean code
1	6153700	Knob spring	PIECES	2	5707292188601
2	3501201	R82 handle M8*25mm Screw	PIECES	2	5707292413932
4	76240	Holder for hand brace	PIECES	2	5707292506016
5	76242	Distance piece	PIECES	2	5707292505095
6*	76243	Hand brace size 1	PIECES	1	5707292505293
	76244	Hand brace size 2	PIECES	1	5707292505309
7	0658016	Button head M5*16, stainless	PIECES	2	5707292139399
8	0235075	Cable tape, black	PIECES	2	5707292135308
9	4395005	Tube isolation Ø13MM, 2,0M	METER	0,3	5707292522818
10*	8720411	Cover for Handgrip size 1	PIECES	1	5707292524263
	8720412	Cover for Handgrip size 2	PIECES	1	5707292524270